

Design R0259 / Socks in Lace Pattern



Size: 38/39

Materials:

Schachenmayr Regia 4-ply Design Line by Arne & Carlos, 100 g in col 03653 Star Night. One set size 2.5 mm double-pointed needles [dpns].

Unwind yarn for 2nd sock as necessary to matching color repeat.

Stockinette: K on RS, p on WS.

Stockinette in rnds: K every rnd.

Lace pattern: Multiple of 4 sts.

Rnds 1 – 4: * P1, k3; rep from * around.

Rnd 5: * P1, pass 3rd st on left needle over 2nd and first st on left needle, k1, yo, k1; rep from * around.

Rnds 6 – 9: Work same as rnds 1 – 4.

Work rnds 1 – 4 once, then work rnds 5 – 9 five times.

Chart pattern: Work in rounds according to chart. Work 16-st pat rep 4 times around. Work rnds 1 – 44 once, then repeat rnds 41 – 44 throughout.

Gauge: 30 sts and 42 rows/rnds = 10 x 10 cm in stockinette.

INSTRUCTIONS

Cast on 64 sts and join for working in the round. Work in lace pat for 24 rnds. Next, work in chart pat, working rnds 1 – 44 once, then working rnds 41 – 44 twice.

Next 4 rnds: Cont in chart pat across sts on 2nd and 3rd needle, repeating rnds 41 – 44 throughout, work sts on first and 4th needle in stockinette. Next, work **boomerang heel** across 32 sts on first and 4th needle.

Refer to [“How to knit socks”](#) on how to work the boomerang heel.

Next, cont in chart pat across sts on 2nd and 3rd needle, repeating rnds 41 – 44 throughout, work sts on first and 4th needle in stockinette. When foot measures 20 cm, work all sts in stockinette and work decreases for toe shaping according to size chart.

Refer to [“How to knit socks”](#) on how to shape the toe.

Design R0259 / Socks in Lace Pattern

Chart Pattern

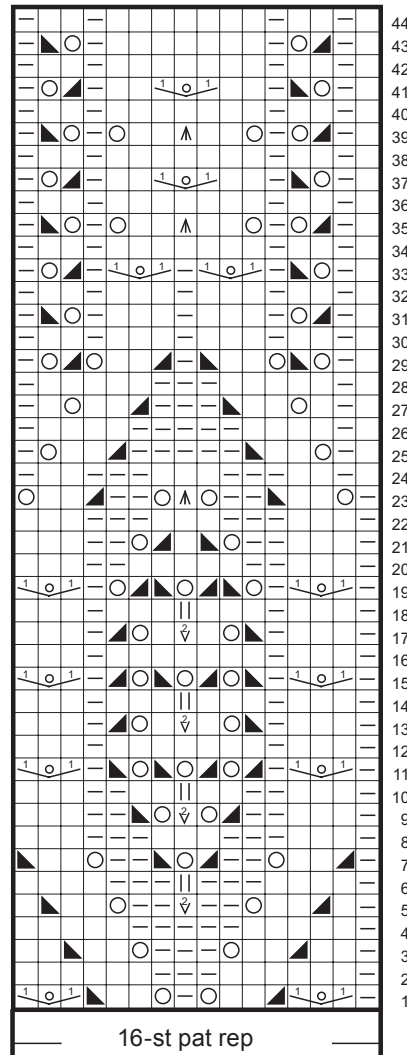


Chart Key

- = k1
- ▢ = p1
- = yo
- ◼ = k2tog
- ◻ = SKP [sl1 kwise, k1, pss0]
- ⋈ = k1f&b = 1 st increased
- ▨ = k2
- ⋈ = SK2P [sl1 kwise, k2tog, pss0]
- ⌋⌋⌋ = pass 3rd st on left needle over 2nd and first st on left needle, k1, yo, k1

Size chart for socks knit in Schachenmayr Regia Design Line by Arne & Carlos.
Gauge: 30 sts and 42 rnds/rows = 10 x 10 cm in stockinette on size 2 - 3 mm needles.

Size	22/23	24/25	26/27	28/29	30/31	32/33	34/35	36/37	38/39	40/41	42/43	44/45	46/47
No of sts to cast on / sts per needle	44/11	48/12	48/12	52/13	52/13	56/14	56/14	60/15	60/15	64/16	64/16	68/17	72/18
No of heel sts	22	24	24	26	26	28	28	30	30	32	32	34	36
No of sts for boomerang heel	7/8/7	8/8/8	8/8/8	8/10/8	8/10/8	9/10/9	6/10/9	10/10/10	10/10/10	10/12/10	10/12/10	11/12/11	12/12/12
Length of foot to beg of toe shaping (cm)	11,5	12	13,5	14	15	16,5	17	18	20	21,5	22,5	23	24
Decreases for toe shaping after first dec rnd													
on foll 4th rnd	---	---	---	---	---	---	---	1x	1x	1x	1x	1x	1x
every 3rd rnd	1x	1x	1x	2x	2x	2x	2x	2x	2x	2x	2x	2x	2x
every other rnd	3x	3x	3x	3x	3x	3x	3x	3x	3x	3x	3x	4x	4x
every rnd	4x	5x	5x	5x	5x	6x	6x	6x	6x	7x	7x	7x	8x
Total length of foot (cm)	14,5	15,5	17	18	19,5	21	22	23,5	25	26,5	27,5	28,5	30