

CHIFFON

by Lisa Richardson

....

YARN

Silky Lace

5 x 50gm

(photographed in Jade 009)

NEEDLES

2¾mm (no 12) (US 2) circular needle, at least
100 cm long

CROCHET HOOK

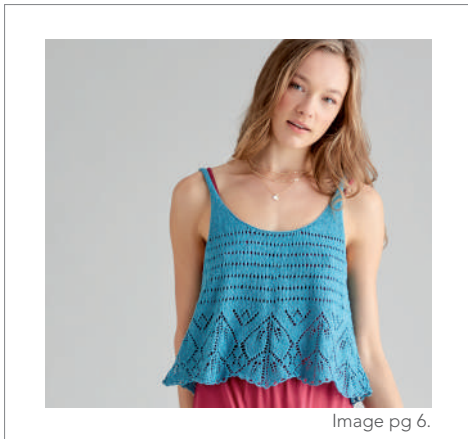
2.50 mm (no 12) (US B1/C2) crochet hook
- used only for final “cast-off” row.

TENSION

29 sts and 38 rows to 10 cm measured over patt
using 2¾ (US 2) needles.

FINISHED SIZE

Completed shawl meas approx 82 cm (32¼ in)
along each row-end edge and 69 cm (27¼ in)
deep (**after blocking**).



ORGANZA

by Lisa Richardson

...

SIZE

To fit bust

81-86 91-97 102-107 112-117 122-127 cm

32-34 36-38 40-42 44-46 48-50 in

Actual chest measurement of garment

92 101 112 122 132 cm

36¼ 39¼ 44 48 52 in

YARN

Silky Lace

2 2 2 2 3 x 50gm

(photographed in Amazonite 007)

NEEDLES

1 pair 2¼mm (no 13) (US 1) needles

1 pair 2¾mm (no 12) (US 2) needles

2¾mm (no 12) (US 2) circular needle, no more than 90 [100: 110: 120: 130] cm long.

CROCHET HOOK

2.50 mm (no 12) (US B1/C2) crochet hook - used only for final "cast-off" row.

TENSION

29 sts and 42 rows to 10 cm measured over stripe lace patt and 29 sts and 38 rows to 10 cm measured over rose leaf patt, both using 2¾mm (US 2) needles.



Image pg 16.

GEORGETTE

by Annika Andrea Wolke

...

YARN

Silky Lace 4 x 50gm
(photographed in Amethyst 003)

NEEDLES

2¾mm (no 12) (US 2) circular needle, at least
100 cm long (see pattern note).

TENSION

29 sts and 42 rows to 10 cm measured over st st
and 26 sts and 42 rows to 10 cm measured over
patt, both using 2¾mm (US 2) needles.

FINISHED SIZE

Completed shawl meas approx 70 cm (27½ in)
deep and approx 201 cm (79 in) wide.



Image pg 8.

DUPION

by Lisa Richardson

...

YARN

Silky Lace

4 x 50gm

(photographed in Rubelite 004)

NEEDLES

1 pair 2¼mm (no 13) (US 1) needles

1 pair 2¾mm (no 12) (US 2) needles

CROCHET HOOK

2.50 mm (no 12) (US B1/C2) crochet hook -
used only for final “cast-off” row.

TENSION

29 sts and 42 rows to 10 cm measured over stripe
lace patt and 29 sts and 38 rows to 10 cm measured
over rose leaf patt, both using 2¾mm (US 2) needles.

FINISHED SIZE

Completed scarf meas 51.5 cm (20¼ in) wide and
approx 171 cm (67¼ in) long.

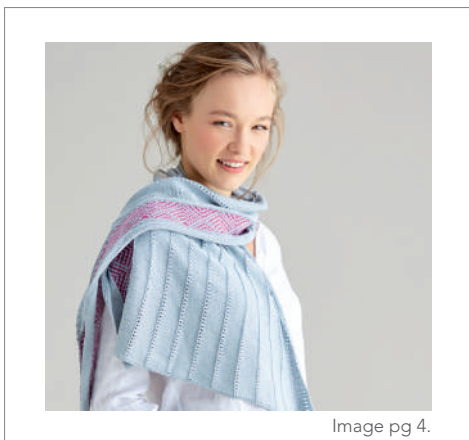


Image pg 4.

H A B U A T I

by Annika Andrea Wolke

...

YARN

Silky Lace

A Aquamarine (002) 2 x 50gm

B Spinel (006) 1 x 50gm

NEEDLES

2¾mm(no 12) (US 2) circular needle, at least
100 cm long (see pattern note).

TENSION

29 sts and 44 rows to 10 cm measured over lace
patt using 2¾mm (US 2) needles.

FINISHED SIZE

Completed shawl meas approx 55 cm (21¼ in)
deep (at one side) and 166 cm (65¼ in) along
cast-off edge.

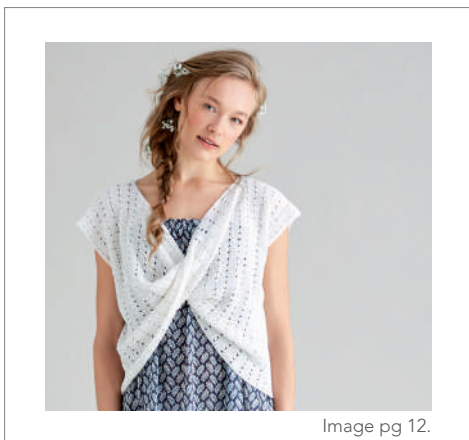


Image pg 12.

T A F F E T A

by Lisa Richardson

..

SIZE

To fit bust

81-86 91-97 102-107 112-117 122-127 cm

32-34 36-38 40-42 44-46 48-50 in

Actual chest measurement of garment

97 106 119 128 137 cm

38¼ 41¾ 46¾ 50½ 54 in

YARN

Silky Lace

3 3 4 4 5 x 50gm

(photographed in Moonstone 001)

NEEDLES

1 pair 2¾mm (no 12) (US 2) needles

TENSION

29 sts and 50 rows to 10 cm measured over patt
using 2¾mm (US 2) needles.