



# Fyne

by Marie Wallin



## SIZE

8 10 12 14 16 18 20 22  
 To fit bust  
 81 86 91 97 102 107 112 117 cm  
 32 34 36 38 40 42 44 46 in

## YARN

### Rowan Felted Tweed

A Bilberry 151  
 1 1 1 1 1 1 1 1 x 50gm  
 B Camel 157  
 2 2 2 3 3 3 3 3 x 50gm  
 C Watery 152  
 1 1 1 1 1 1 1 1 x 50gm  
 D Pine 158  
 1 1 1 1 1 1 1 1 x 50gm  
 E Avacado 161  
 1 1 1 1 1 1 1 1 x 50gm  
 F Ginger 154  
 1 1 1 1 1 1 1 1 x 50gm

## NEEDLES

1 pair 3¼mm (no 10) (US 3) needles  
 1 pair 3¼mm (no 9) (US 5) needles  
 3¼mm (no 10) (US 3) circular needle

## TENSION

25 sts and 29 rows to 10 cm measured over patterned stocking stitch using 3¼mm (US 5) needles.

**Pattern note:** Chart is a 59 row patt repeat. On first (and where appropriate 3rd) repeat of chart, work odd numbered rows as RS K rows and even numbered rows as WS P rows.

On 2nd (and where appropriate 4th) repeat of chart, work odd numbered rows as WS P rows and even numbered rows as RS K rows.

## BACK

Using 3¼mm (US 3) needles and yarn A cast on 109 [113: 119: 125: 133: 141: 149: 155] sts.

**Row 1 (RS):** K1 [0: 1: 0: 0: 2: 1: 0], P2 [0: 2: 1: 0: 2: 2: 1], \*K3, P2, rep from \* to last 1 [3: 1: 4: 3: 2: 1: 4] sts, K1 [3: 1: 3: 3: 2: 1: 3], P0 [0: 0: 1: 0: 0: 0: 1].

**Row 2:** P1 [0: 1: 0: 0: 2: 1: 0], K2 [0: 2: 1: 0: 2: 2: 1], \*P3, K2, rep from \* to last 1 [3: 1: 4: 3: 2: 1: 4] sts, P1 [3: 1: 3: 3: 2: 1: 3], K0 [0: 0: 1: 0: 0: 0: 1].

These 2 rows form rib.

Work in rib for a further 32 rows, ending with RS facing for next row.

Change to 3¼mm (US 5) needles.

Beg and ending rows as indicated, using the **fairisle** technique and repeating the 59 row patt rep throughout, work from chart, which is worked entirely in st st beg with a K row, as folls:

Cont straight until back meas 27 [27: 26: 29: 28: 30: 29: 31] cm, ending with RS facing for next row.

## Shape armholes

Keeping patt correct, cast off 7 [8: 8: 9: 9: 10: 10: 11] sts at beg of next 2 rows. 95 [97: 103: 107: 115: 121: 129: 133] sts.\*\*

Dec 1 st at each end of next 13 [13: 15: 15: 17: 17: 19: 19] rows, then on foll 3 [3: 3: 3: 3: 4: 4: 4] alt rows. 63 [65: 67: 71: 75: 79: 83: 87] sts.

Cont straight until armhole meas 20 [20: 21: 21: 22: 22: 23: 23] cm, ending with RS facing for next row.

## Shape back neck and shoulders

**Next row (RS):** Patt 16 [17: 18: 20: 21: 23: 25: 27] sts and

turn, leaving rem sts on a holder.

Work each side of neck separately.

Cast off 3 sts at beg of next row, 5 [5: 6: 7: 7: 8: 9: 10] sts at beg of foll row, then 3 sts at beg of next row.

Cast off rem 5 [6: 6: 7: 8: 9: 10: 11] sts.

With RS facing, rejoin yarns to rem sts, cast off centre 31 [31: 31: 31: 33: 33: 33: 33] sts, patt to end.

Complete to match first side, reversing shapings.

## FRONT

Work as given for back to \*\*.

Dec 1 st at each end of next 8 rows, ending with RS facing for next row. 79 [81: 87: 91: 99: 105: 113: 117] sts.

### Divide for neck

**Next row (RS):** K2tog, patt 37 [38: 41: 43: 47: 50: 54: 56] sts and turn, leaving rem sts on a holder.

Work each side of neck separately.

Dec 1 st at armhole edge of next 4 [4: 6: 6: 8: 8: 10: 10] rows, then on foll 3 [3: 3: 3: 3: 4: 4: 4] alt rows **and at same time** dec 1 st at neck edge of next [next: 2nd: 2nd: 2nd: 2nd: 2nd] and foll 1 [1: 0: 0: 0: 0: 0: 0] rows, then on every foll alt row. 25 [26: 27: 29: 30: 31: 32: 34] sts.

Dec 1 st at neck edge **only** on 2nd and every foll alt row until 10 [11: 12: 14: 16: 18: 21: 23] sts rem, then on 0 [0: 0: 0: 1: 1: 2: 2] foll 4th rows. 10 [11: 12: 14: 15: 17: 19: 21] sts.

Cont straight until front matches back to beg of shoulder shaping, ending with RS facing for next row.

### Shape shoulder

Cast off 5 [5: 6: 7: 7: 8: 9: 10] sts at beg of next row.

Work 1 row.

Cast off rem 5 [6: 6: 7: 8: 9: 10: 11] sts.

With RS facing, slip centre st onto a holder, rejoin yarns to rem sts, patt to last 2 sts, K2tog.

Complete to match first side, reversing shapings.

## MAKING UP

Press.

Join right shoulder seam using back stitch, or mattress stitch if preferred.

### Neckband

With RS facing, using 3¼mm (US 3) circular needle and yarn A, pick up and knit 50 [50: 55: 55: 60: 60: 65: 65] sts down left side of neck, K st from holder and mark this st with a coloured thread, pick up and knit 50 [50: 55: 55: 60: 60: 65: 65] sts up right side of neck, then 40 [40: 40: 40: 45: 45: 45: 45] sts from back.

141 [141: 151: 151: 166: 166: 176: 176] sts.

**Row 1 (WS):** P2, \*K2, P3, rep from \* to last 4 sts, K2, P2.

This row sets position of rib.

Keeping rib correct, cont as folls:

**Row 2:** Rib to within 2 sts of marked st, K2tog, sl marked st, sl 1, K1, psso, rib to end.

**Row 3:** Rib to marked st, P marked st, rib to end.

Rep last 2 rows once more, then row 2 again, ending with **WS** facing for next row.

135 [135: 145: 145: 160: 160: 170: 170] sts.

Cast off in rib (on **WS**).

Join left shoulder and neckband seam.

### Armhole borders (both alike)

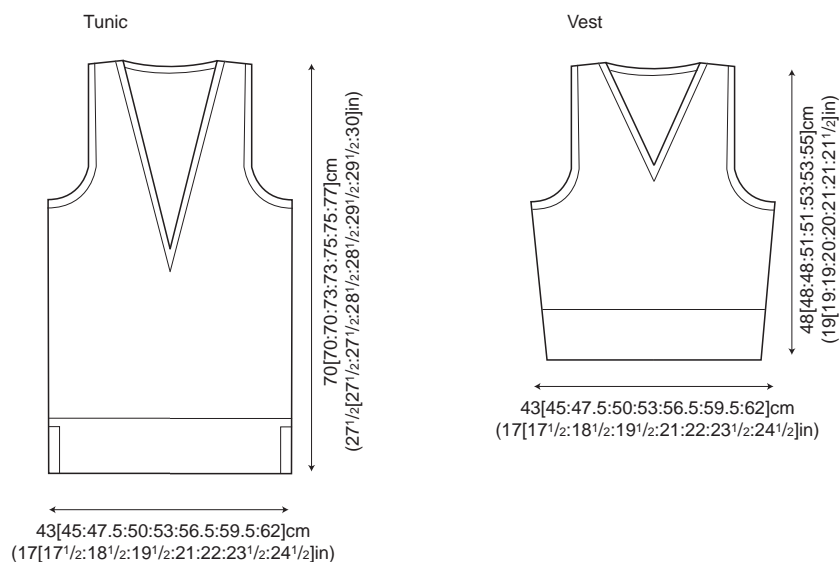
With RS facing, using 3¼mm (US 3) needles and yarn A, pick up and knit 141 [146: 151: 156: 161: 166: 171: 176] sts evenly all round armhole edge.

**Row 1 (WS):** P2, \*K2, P3, rep from \* to last 4 sts, K2, P2.

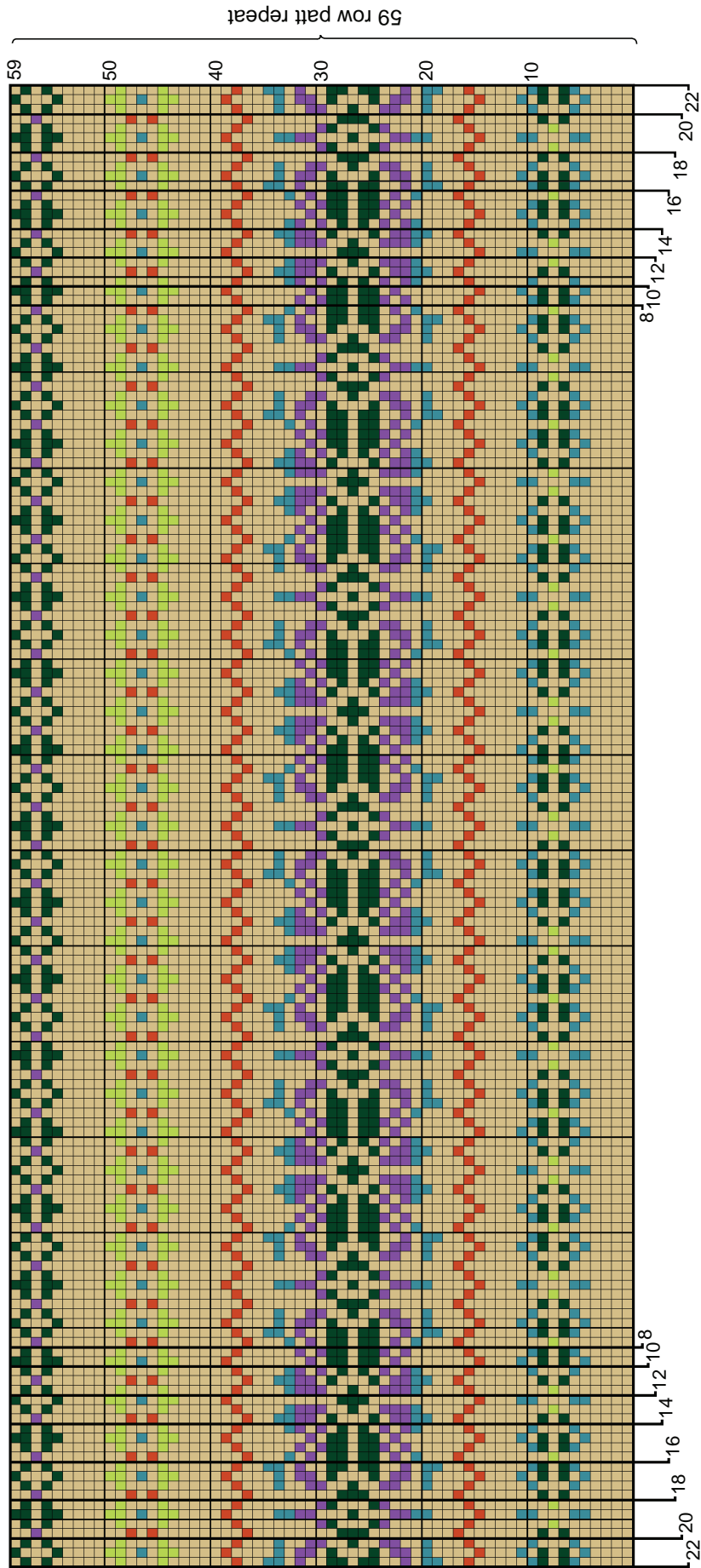
**Row 2:** K2, \*P2, K3, rep from \* to last 4 sts, P2, K2.

Rep last 2 rows twice more, ending with **WS** facing for next row.

Cast off in rib (on **WS**).



key  
 A B C D E F



All right reserved. Reproduction in whole or any part of all material, including illustrations, in this brochure is strictly forbidden. No part maybe reproduced, stored in a retrieval system, or transmitted in any form or by any means electronic, electrostatic, magnetic tape, mechanical, photocopying, recording or otherwise without prior permission of the copyright owners having been given in writing. The designs in this brochure are copyrighted and must not be knitted for re-sale. Reproduction of this publication is protected by copyright and is sold on the condition that it is used for non-commercial purposes. Yarn quantities are approximate as they are based on average requirements. Colour reproduction is as close as printing will allow.

First published in Great Britain in 2012 by Coats Crafts UK Ltd, Green Lane Mill, Holmfirth, West Yorkshire, England, HD9 2DX Internet: [www.knitrowan.com](http://www.knitrowan.com) Email: [mail@knitrowan.com](mailto:mail@knitrowan.com) © Copyright Rowan 2012