



Mini Mitts and Hats Christmas Decorations

by Anna Nikipirowicz



YARN

Kid Classic

A Cherry Red 847	1	x 50gm
B Feather 828	1	x 50gm
C Bear 817	1	x 50gm
D Spruce 853	1	x 50gm

NEEDLES

1 pair 3¼mm (no 10) (US 3) needles
Set of 4 double-pointed 3¼mm (no 10) (US 3) needles

Pattern note: we have used 3¼mm needles to knit these pieces, however you may use whichever needles you have to hand but note that the size of the pieces will vary depending on needles used.

It is not essential to achieve a particular tension on any of these pieces.

RED SNOWFLAKE HAT

Using 3¼mm (US 3) needles and yarn A cast on 42 sts.

Row 1 (WS): K2, *P2, K2, rep from * to end.

Row 2: P2, *K2, P2, rep from * to end.

These 2 rows form rib.

Work in rib for a further 3 rows, ending with RS facing for next row.

Next row (RS): Knit

Next row: Purl.

Place chart

Working in st st throughout and using the **intarsia** technique, place chart A as follows:

Next row (RS): K11, work next 20 sts as row 1 of chart A, K11.

Next row: P11, work next 20 sts as row 2 of chart A, P11.

These 2 rows set the sts of chart A.

Work rem 18 rows of chart, ending with RS facing for next row.

Next row (RS): *K2tog, rep from * to end. 21 sts.

Break yarn and thread through rem 21 sts.

Pull up tight and fasten off securely.

MAKING UP

Press.

Join back seam using back stitch or mattress stitch if preferred, reversing the rib for turn back of hat.

Using yarn A, make a 4.5cm pom pom and attach to top of hat.

Ear flaps (MAKE 2)

Using 3¼mm (US 3) needles and yarn A pick up and knit 6 sts on side of hat after rib.

Row 1 (WS): Purl.

Row 2: K2tog, K2, K2tog. 4 sts.

Row 3: Purl.

Row 4: (K2tog) twice. 2 sts.

Row 5: Purl.

Cast off rem 2 sts, break yarn leaving approx 7 cm of yarn.

Thread a piece of yarn B through the cast off edge of the ear flap, then plait with the strand of yarn A until almost at the end of the strands of yarn, tie in a knot and cut ends of yarn to same length.

GREEN SNOWFLAKE HAT

Using 3¼mm (US 3) needles and yarn D cast on 43 sts.

Row 1 (RS): Knit

Row 2: Knit

These 2 rows form g st.

Work in g st for a further 2 rows, ending with RS facing for next row.

Begin and ending rows as indicated, using the **fairisle** technique

and repeating the 13 st patt rep 3 times across each row, cont in patt from chart B, which is worked entirely in st st beg with a knit row as folls:

Cont straight until all 20 rows of chart have been completed, dec 1 st at end of last row, ending with RS facing for next row. 42 sts.

Next row (RS): *K2tog, rep from * to end. 21 sts.

Break yarn and thread through rem 21 sts.

Pull up tight and fasten off securely.

MAKING UP

Press.

Join back seam using back stitch or mattress stitch if preferred.

Using yarns B and D, make a 4.5cm pom pom and attach to top of hat.

STRIPEY HAT

STRIPE SEQUENCE

Rows 1 and 2: Using yarn A

Rows 3 and 4: Using yarn B

Rows 5 and 6: Using yarn C

These 6 rows form stripe sequence and are repeated throughout.

Using 3¼mm (US 3) needles and yarn A cast on 40 sts.

Beg with a K row and stripe row 1, now work in st st in stripe sequence as folls:

Work 10 rows, ending with RS facing for next row.

Row 11 (RS): *K8, K2tog, rep from * to end. 36 sts.

Row 12 and every foll alt row: Purl

Row 13: *K7, K2tog, rep from * to end. 32 sts.

Row 15: *K6, K2tog, rep from * to end. 28 sts.

Row 17: *K5, K2tog, rep from * to end. 24 sts.

Row 19: Knit.

Row 21: *K4, K2tog, rep from * to end. 20 sts.

Row 23: Knit.

Row 25: *K3, K2tog, rep from * to end. 16 sts.

Rows 27 and 29: Knit.

Row 31: *K2, K2tog, rep from * to end. 12 sts.

Row 33 and 35: Knit.

Row 37: *K1, K2tog, rep from * to end. 8 sts.

Work 6 rows, ending with RS facing for next row.

Break yarn and thread through rem 8 sts.

Pull up tight and fasten off securely.

MAKING UP

Press.

Join back seam using back stitch or mattress stitch if preferred.

Using yarns A, B and C, cut lengths of yarn approx 10 cm long and tie in a knot to make tassel, then attach to top of hat.

SNOWFLAKE MITTEN

Using 3¼mm (US 3) double-pointed needles and yarn A cast on 30 sts.

Distribute sts evenly over 3 of the 4 needles, using 4th needle and taking care not to twist cast-on edge, work in rounds as folls:

Round 1 (RS): *K1, P1, rep from * to end.

This round forms rib.

Cont in rib for a further 5 rounds.

Shape thumb gusset

Round 1: K16, M1, K2, M1, K12. 32 sts.

Round 2 and every foll alt round: Knit.

Place chart

Round 3: K4, work next 7 sts as row 1 of chart C, K5, M1, K4, M1, K12. 34 sts.

Round 5: Patt 16 sts, M1, K6, M1, K to end. 36 sts.

Round 7: Patt 16 sts, M1, K8, M1, K to end. 38 sts.

Round 9: Patt 17 sts, place 8 sts of thumb gusset on stitch holder, K to end. 30 sts.

Work a further 3 rounds, this completes patt from chart.

Round 13: *K2tog, K5, rep from * to last 2 sts, K2. 26 sts.

Round 14: Knit.

Round 15: *K2tog, K4, rep from * to last 2 sts, K2. 22 sts.

Round 16: *K2tog, K3, rep from * to last 2 sts, K2. 18 sts.

Round 17: *K2tog, K2, rep from * to last 2 sts, K2. 14 sts.

Round 18: *K2tog, K1, rep from * to last 2 sts, K2. 10 sts.

Break yarn and thread through rem 10 sts.

Pull up tight and fasten off securely.

Rejoin yarn to sts on holder.

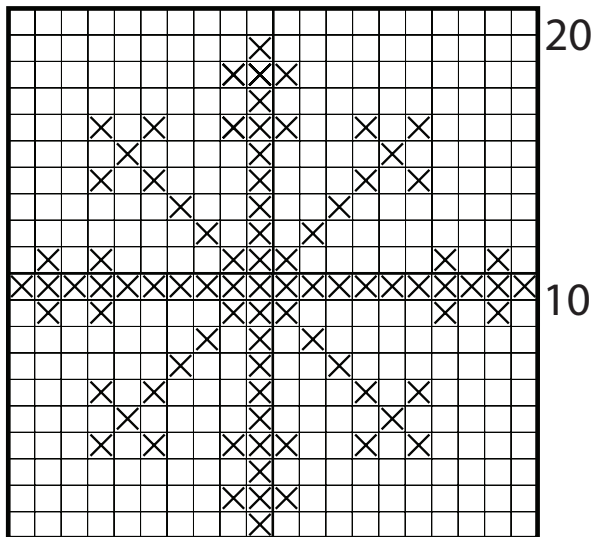
Next Round: Knit.

Next Round: *P2tog, rep from * to end. 5 sts.

Break yarn and thread through rem 5 sts.

Pull up tight and fasten off securely, joining side of thumb seam.

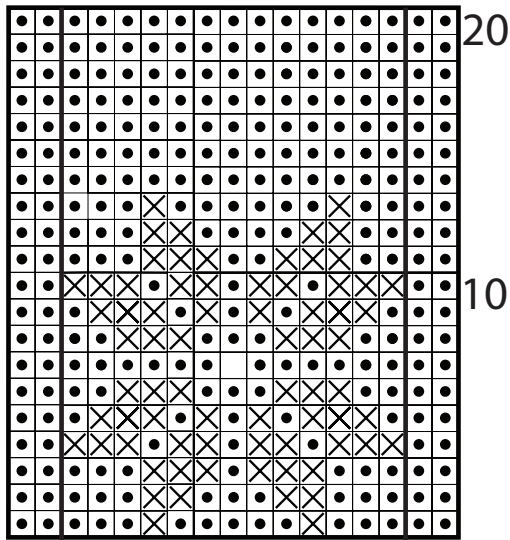
Chart A



Key

- A
- ⊗ B
- D

Chart B



13 st patt rep

Chart C

