

R O  A N

Owl Doorstop

By Sara Thornett





Owl Doorstop

by Sara Thornett



YARN

Pure Wool DK and Baby Merino Silk DK

A	PW Anthracite	003	1	x 50gm
B	PW Clay	048	1	x 50gm
C	PW Snow	012	1	x 50gm
D	Baby Cantaloupe	686	1	x 50gm

NEEDLES

1 pair 3¾mm (no 9) (US 5) needles
3.50mm (no 9) (US E4) crochet hook

EXTRAS – Washable toy filling, piece of fabric approx 22 cm by 45 cm, and heavy pebbles and sand

TENSION

24 sts and 32 rows to 10 cm measured over plain (or striped) st st, 27 sts and 30 rows to 10 cm measured over patterned st st, both using 3¾mm (US 5) needles and Pure Wool DK.
18 sts and 6 rows to 10 cm measured over wing patt using 3.50mm (US E4) crochet hook and Baby Merino Silk DK.

FINISHED SIZE

Completed doorstop is approx 28 cm (11 in) tall and approx 20 cm (8 in) wide.

CROCHET ABBREVIATIONS

ch = chain; **dc** = double crochet; **tr** = treble.

STRIPE SEQUENCE

Rows 1 and 2: Using yarn A.

Row 3: Using yarn C.

Row 4: Using yarn B.

Rows 5 and 6: Using yarn A.

Row 7: Using yarn B.

Row 8: Using yarn C.

These 8 rows form stripe sequence.

BACK

Using 3¾mm (US 5) needles and yarn A cast on 49 sts.

Beg with a K row and stripe sequence row 1 (see above), cont in st st in stripes as folls:

Work 6 rows, ending with RS facing for next row.

Inc 1 st at each end of next and foll 6th row, then on foll 8th row. 55 sts.

Work a further 37 rows, ending after stripe row 2 and with RS facing for next row.

Break off yarns A and C and cont using yarn B **only**.

Dec 1 st at each end of next and 2 foll 8th rows, then on foll 6th row, then on 2 foll 4th rows. 43 sts.

****Work 1 row, ending with RS facing for next row.**

Shape upper edge

Next row (RS): K16 and turn, leaving rem sts on a holder. Work each side separately.

Cast off 5 sts at beg of next and foll alt row, ending with RS facing for next row, **and at same time** dec 1 st at beg of 2nd row.

Cast off rem 5 sts.

With RS facing, rejoin yarn to rem sts, cast off centre 11 sts, K to end. 16 sts.

Complete to match first side, reversing shapings.

FRONT

First side panel

Using 3¾mm (US 5) needles and yarn A cast on 9 sts.

Beg with a K row and stripe sequence row 1 (see above), cont in st st in stripes as folls:

Work 6 rows, ending with RS facing for next row.

Inc 1 st at end of next and foll 6th row, then on foll 8th row **and at same time** dec 1 st at beg of next and foll 8th row. 10 sts.

Work a further 37 rows, ending after stripe row 2 and with RS facing for next row.

Break yarn and leave sts on a holder.

Centre panel

Using 3¾mm (US 5) needles and yarn A cast on 37 sts.

Beg and ending rows as indicated and using the **fairisle** technique as described on the information page in FAQ area, cont in patt from chart for chest, which is worked entirely in st st beg with a K row, as folls:

Inc 1 st at each end of 7th and 2 foll 6th rows. 43 sts.

Cont straight until all 54 rows of chart have been completed, ending with RS facing for next row.

Break yarn and leave these sts on another holder.

Second side panel

Using 3¾mm (US 5) needles and yarn A cast on 9 sts.

Beg with a K row and stripe sequence row 1 (see above), cont in st st in stripes as folls:

Work 6 rows, ending with RS facing for next row.

Inc 1 st at beg of next and foll 6th row, then on foll 8th row **and at same time** dec 1 st at end of next and foll 8th row. 10 sts.

Work a further 37 rows, ending after stripe row 2 and with RS facing for next row.

Join panels

Break off all contrasts and cont in st st using yarn B **only** as folls:

Next row (RS): Work across 10 sts of second side panel as folls: K2tog, K6, sl 1, K1, pssso, now work across 43 sts of centre panel as folls: (K2tog, K6) twice, K2tog, K7, sl 1, K1, pssso, (K6, sl 1, K1, pssso) twice, then K across 10 sts of first side panel as folls: K2tog, K6, sl 1, K1, pssso. 53 sts.

Work 5 rows, ending with RS facing for next row.

Beg and ending rows as indicated and using the **intarsia** technique as described on the information page in FAQ area, cont in patt from chart for eyes, which is worked entirely in st st beg with a K row, as folls:

Dec 1 st at each end of 3rd and foll 8th row, then on foll 6th row, ending after chart row 17 and with **WS** facing for next row. 47 sts.

Break off contrasts and cont in st st using yarn B **only** as folls:

Dec 1 st at each end of 4th and foll 4th row. 43 sts.

Complete as given for back from ******.

BASE

Using 3¾mm (US 5) needles and yarn A cast on 5 sts.

Beg with a K row, work in st st as folls:

Work 1 row, ending with **WS** facing for next row.

Inc 1 st at each end of next 4 rows, then on foll 4 alt rows, then on 2 foll 4th rows. 25 sts.

Work 12 rows, ending with **WS** facing for next row.

Dec 1 st at each end of next and 2 foll 4th rows, then on foll 4 alt rows, then on foll 3 rows, ending with **WS** facing for next row.

Cast off rem 5 sts.

WINGS (make 2)

Using 3.50mm (US E4) crochet hook and yarn D, make 4 ch.

Row 1 (RS): 4 tr into 4th ch from hook, turn.

Row 2: 3 ch (counts as first st), 3 tr between st at base of 3 ch and next tr, miss 3 tr, 3 tr between last tr missed and 3 ch at beg of previous row, 1 tr into top of 3 ch at beg of previous row, turn. 8 sts.

Row 3: 3 ch (counts as first st), 3 tr between st at base of 3 ch and next tr, miss 3 tr, 3 tr between tr just missed and next tr, miss 3 tr, 3 tr between tr just missed and 3 ch at beg of previous row, 1 tr into top of 3 ch at beg of previous row, turn. 11 sts.

Row 4: 3 ch (counts as first st), 3 tr between st at base of 3 ch and next tr, (miss 3 tr, 3 tr between tr just missed and next tr) twice, miss 3 tr, 3 tr between tr just missed and 3 ch at beg of previous row, 1 tr into top of 3 ch at beg of previous row, turn. 14 sts.

Row 5: 3 ch (counts as first st), 3 tr between st at base of 3 ch and next tr, (miss 3 tr, 3 tr between tr just missed and next tr) 3 times, miss 3 tr, 3 tr between tr just missed and 3 ch at beg of previous row, 1 tr into top of 3 ch at beg of previous row, turn. 17 sts.

Row 6: 3 ch (counts as first st), 3 tr between st at base of 3 ch and next tr, (miss 3 tr, 3 tr between tr just missed and next tr) 4 times, miss 3 tr, 3 tr between tr just missed and 3 ch at beg of previous row, 1 tr into top of 3 ch at beg of previous row, turn. 20 sts.

Row 7: 3 ch (counts as first st), 1 tr into tr at base of 3 ch, (miss 3 tr, 3 tr between tr just missed and next tr) 5 times, miss 3 tr, 2 tr into top of 3 ch at beg of previous row, turn. 19 sts.

Row 8: 3 ch (counts as first st), miss tr at base of 3 ch and next tr, 3 tr between tr just missed and next tr, (miss 3 tr, 3 tr between tr just missed and next tr) 5 times, miss 1 tr, 1 tr into top o 3 ch at beg of previous row, turn. 20 sts.

Row 9: As row 7.

Row 10: 1 ch (does NOT count as st), 1 dc into tr at base of 1 ch, 1 dc into each of next 17 tr, 1 dc into top of 3 ch at beg of previous row. 19 sts.

Fasten off.

MAKING UP

Press as described on the information page in FAQ area.

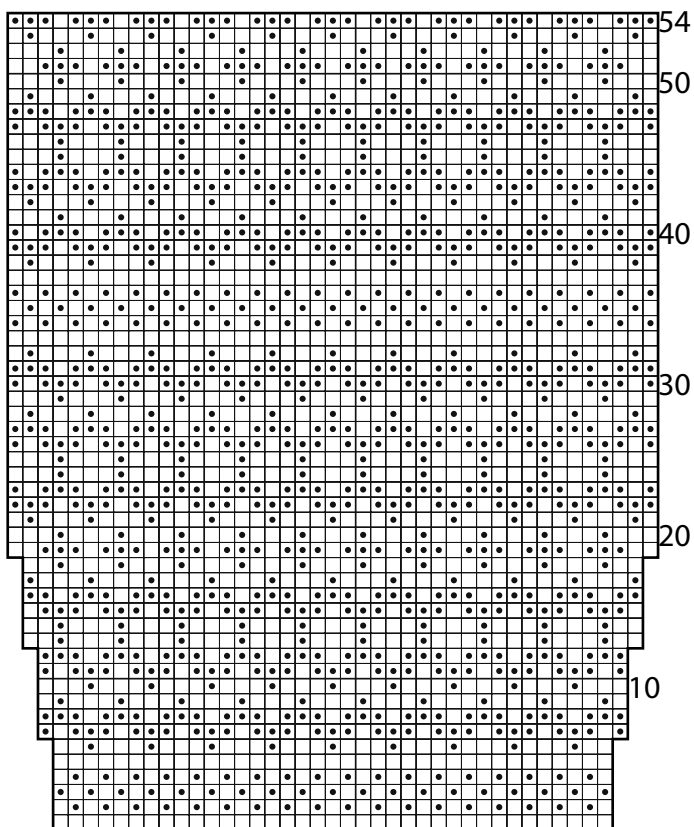
Join row-end edges of front panels below joining row to form complete front piece – due to difference in row tensions, the edges should be the same length but there will NOT be the same number of rows in each edge.

Using photograph as a guide and yarn A, embroider details onto face section as folls: Above eyes, embroider 5 lazy daisy stitches to form eyelashes. For beak, embroider a triangle of satin st between eyes, positioning top edge of beak approx 1.5 cm above base of eyes.

From fabric, cut out a piece the same size as the knitted base section – do NOT add seam allowance. From remaining fabric, cut out 2 pieces same size as back from cast-on edge to top of striped section – again, do NOT add seam allowance. Join knitted front and back pieces along row-end edges to form side seams, leaving cast-on and shaped cast-off edges open. Positioning cast-on and cast-off edges of base at base of side seams, sew base to cast-on edges of back and front. Taking 1.5 cm seam allowances (so fabric section is smaller than knitted sections), join side seams of fabric pieces, then attach base in same way as knitted sections. Fill this fabric bag

with pebbles and then sand until it is quite firmly filled, then close upper edge. Insert toy filling into knitted pieces to form a fairly thick layer over base section. Now slip filled fabric bag inside knitted sections so it “sits” on the toy filling. Insert more toy filling around fabric bag, making an even layer of filling all around bag. Complete filling knitted sections until they are firmly filled, then sew upper shaped cast-off edges closed. Using photograph as a guide, attach top of last row of wings over sides of completed owl, positioning this edge just above top of striped sections.

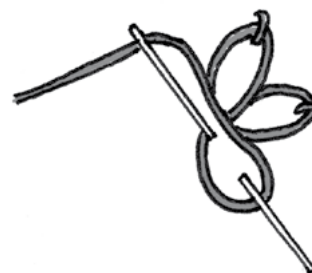
Chest Chart



key

- A
- B

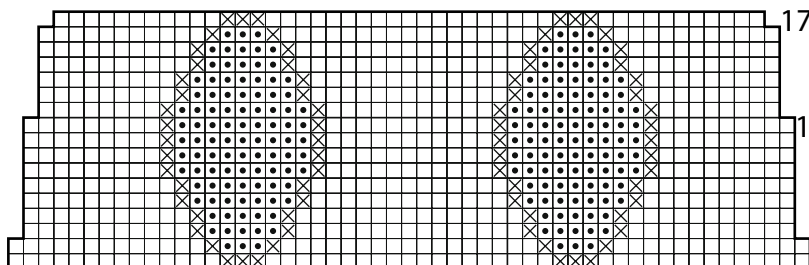
Lazy Daisy Stitch



Eyes Chart

key

- B
- C
- A



To find your local stockist click here

