

R O  A N

# La Traviata

By Martin Storey





# La Traviata

by Martin Storey



## SIZES

S	M	L	XL	XXL	
To fit bust					
81-86	91-97	102-107	112-117	122-127	cm
32-34	36-38	40-42	44-46	48-50	in

length:					
58	60	62	64	66	cm
23	23½	24½	25	26	in

width (at underarm):					
46	51	57	63	70.5	cm
18	20	22½	25	28	in

sleeve seam:					
45	46	47	47	47	cm
17½	18	18½	18½	18½	in

## YARN

### Fine Lace and Kidsilk Haze

A FL Sonata 940					
4	4	4	5	5	x 50gm
B KSH Turkish Plum 660					
7	7	8	9	9	x 25gm
C FL Vintage 926					
2	2	2	3	3	x 50gm
D KSH Smoke 605					
3	3	4	4	4	x 25gm

## NEEDLES

- 1 pair 2¼mm (no 13) (US 1) needles
- 1 pair 2¾mm (no 12) (US 2) needles

## TENSION

34 sts and 34 rows to 10 cm measured over patterned st st using 2¾mm (US 2) needles and one strand each of Fine Lace and Kidsilk Haze held together.

## BACK

Using 2¼mm (US 1) needles and one strand each of yarns A and B held together cast on 170 [186: 206: 230: 254] sts.

**Row 1 (RS):** K2, \*P2, K2, rep from \* to end.

**Row 2:** P2, \*K2, P2, rep from \* to end.

These 2 rows form rib.

Work in rib for a further 10 rows, ending with RS facing for next row.

Keeping rib correct, dec 1 st at each end of next and 4 foll 4th rows. 160 [176: 196: 220: 244] sts.

Work 1 row, inc [inc: inc: dec: dec] 1 st at centre of row and ending with RS facing for next row. 161 [177: 197: 219: 243] sts.

Change to 2¾mm (US 2) needles.

Beg and ending rows as indicated, using the **intarsia** technique, working chart rows 1 and 2 **once only** and then repeating chart rows 3 to 84 throughout, cont in patt from chart, which is worked entirely in st st beg with a K row, as follows:

Dec 1 st at each end of 3rd and 3 foll 4th rows, then on foll 5 alt rows, then on foll 4th row. 141 [157: 177: 199: 223] sts.

Work 13 rows, ending with RS facing for next row.

Inc 1 st at each end of next and every foll 6th row until there are 157 [173: 193: 215: 239] sts, taking inc sts into patt.

Cont straight until back meas 37 [38: 39: 40: 41] cm, ending with RS facing for next row.

## Shape armholes

Keeping patt correct, cast off 7 [9: 11: 13: 15] sts at beg of next 2 rows. 143 [155: 171: 189: 209] sts.\*\*

Dec 1 st at each end of next 7 [9: 11: 13: 15] rows, then on foll 8 [9: 10: 12: 14] alt rows. 113 [119: 129: 139: 151] sts.

Cont straight until armhole meas 19 [20: 21: 22: 23] cm, ending with RS facing for next row.

### Shape back neck

**Next row (RS):** Patt 33 [36: 40: 45: 49] sts and turn, leaving rem sts on a holder.

Work each side of neck separately.

Dec 1 st at neck edge of next row, ending with RS facing for next row. 32 [35: 39: 44: 48] sts.

### Shape shoulder

Cast off 10 [11: 12: 14: 15] sts at beg of next and foll alt row **and at same time** dec 1 st at neck edge of next 3 rows.

Work 1 row.

Cast off rem 9 [10: 12: 13: 15] sts.

With RS facing, slip centre 47 [47: 49: 49: 53] sts onto a holder, rejoin yarns and patt to end.

Complete to match first side, reversing shapings.

## FRONT

Work as given for back to \*\*.

Dec 1 st at each end of next 7 [9: 10: 13: 14] rows.

129 [137: 151: 163: 181] sts.

Work 1 [1: 0: 1: 0] row, ending with RS facing for next row.

### Shape front neck

**Next row (RS):** K2tog, patt 51 [55: 62: 68: 76] sts and turn, leaving rem sts on a holder. 52 [56: 63: 69: 77] sts.

Work each side of neck separately.

Keeping patt correct, dec 1 st at neck edge of next 10 rows, then on foll 3 [3: 4: 4: 5] alt rows, then on 2 foll 4th rows, then on foll 6th row **and at same time** dec 1 st at armhole edge of 2nd and foll 6 [7: 9: 10: 13] alt rows. 29 [32: 36: 41: 45] sts.

Cont straight until front matches back to beg of shoulder shaping, ending with RS facing for next row.

### Shape shoulder

Cast off 10 [11: 12: 14: 15] sts at beg of next and foll alt row.

Work 1 row.

Cast off rem 9 [10: 12: 13: 15] sts.

With RS facing, slip centre 23 [23: 23: 23: 25] sts onto a holder, rejoin yarns, patt to last 2 sts, K2tog.

Complete to match first side, reversing shapings.

## SLEEVES

Using 2¼mm (US 1) needles and one strand each of yarns A and B held together cast on 162 [166: 170: 170: 174] sts.

Work in rib as given for back for 20 rows, inc [inc: inc: inc: dec] 1 st at centre of row and ending with RS facing for next row.

163 [167: 171: 171: 173] sts.

Change to 2¾mm (US 2) needles.

Beg and ending rows as indicated and **beg with chart row 45**, cont in patt from chart as folls:

Dec 1 st at each end of 5th [5th: 5th: 7th: 7th] and every foll 6th [6th: 6th: 8th: 8th] row to 123 [137: 153: 147: 169] sts, then on every foll – [8th: 8th: 10th: 10th] row until – [129: 135: 141: 147] sts rem.

Cont straight until sleeve meas approx 45 [46: 47: 47: 47] cm, ending after same chart row as on back to beg of armhole shaping and with RS facing for next row.

### Shape top

Keeping patt correct, cast off 7 [9: 11: 13: 15] sts at beg of next 2 rows. 109 [111: 113: 115: 117] sts.

Dec 1 st at each end of next 9 rows, then on every foll alt row until 65 sts rem, then on foll 11 rows, ending with RS facing for next

row. 43 sts.

Cast off 4 sts at beg of next 4 rows.

Cast off rem 27 sts.

## MAKING UP

Press.

Join right shoulder seam using back stitch, or mattress stitch if preferred.

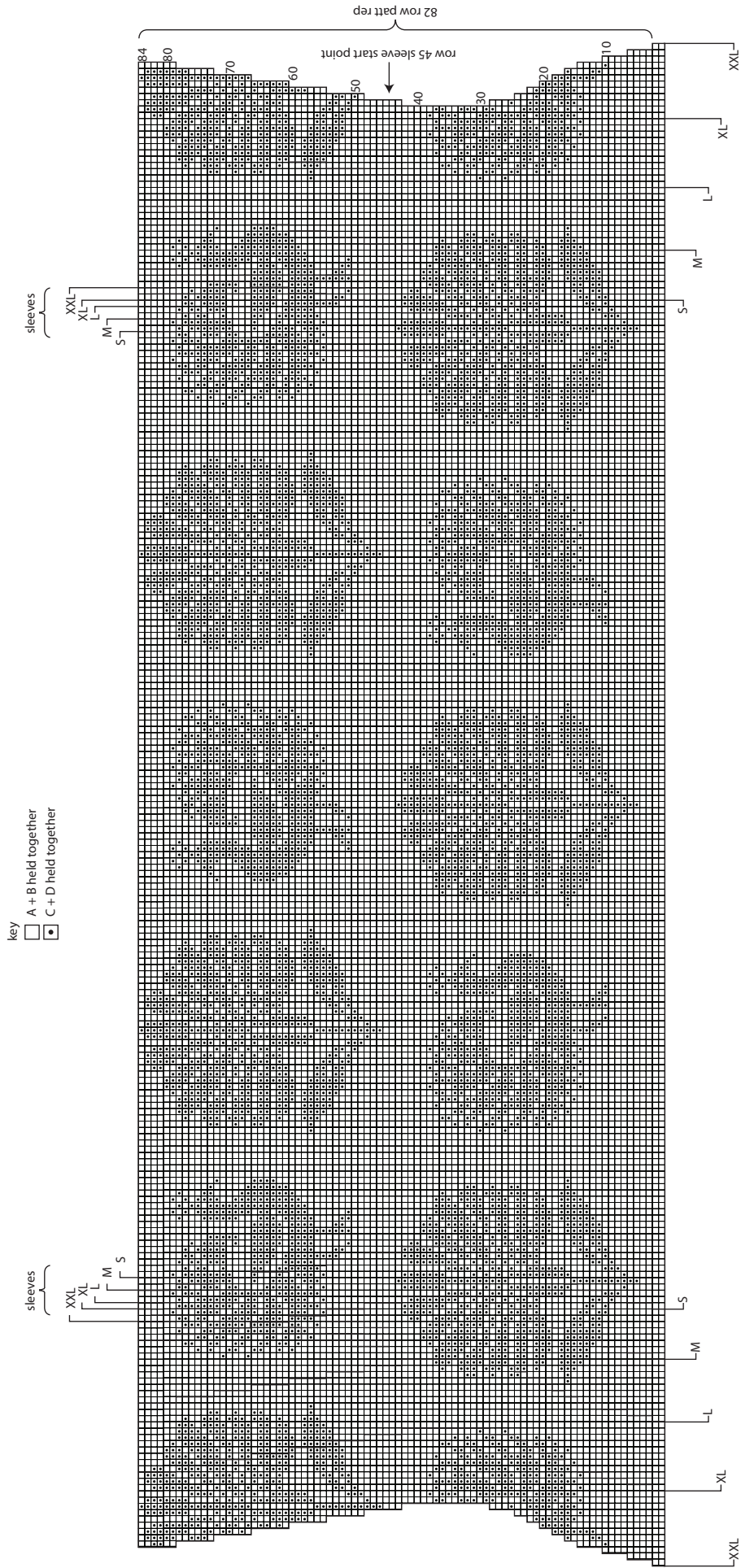
### Neckband

With RS facing, using 2¼mm (US 1) needles and one strand each of yarns A and B held together, pick up and knit 59 [59: 62: 62: 67] sts down left side of front neck, K across 23 [23: 23: 23: 25] sts on front holder, pick up and knit 59 [59: 62: 62: 67] sts up right side of front neck, and 5 sts down right side of back neck, K across 47 [47: 49: 49: 53] sts on back holder, then pick up and knit 5 sts up left side of back neck. 198 [198: 206: 206: 222] sts.

Beg with row 2, work in rib as given for back for 15 rows, ending with RS facing for next row.

Cast off in rib.

Set in sleeves using the set-in method.



All right reserved. Reproduction in whole or any part of all material, including illustrations, in this publication is strictly forbidden. No part may be reproduced, stored in a retrieval system, or transmitted in any form or by any means electronic, electrostatic, magnetic tape, mechanical, photocopying, recording or otherwise without prior permission of the copyright owners having been given in writing.

The designs in this publication are copyrighted and must not be knitted for re-sale. Reproduction of this publication is protected by copyright and is sold on the condition that it is used for non commercial purposes. Yarn quantities are approximate as they are based on average requirements. Please note images are for guidance only. Colours may not display accurately on screen or in printed format. Contact your local stockist to view a fringed (not digital reproduction) yarn shade card.