

R O W A N



# Madison

By Martin Storey





# Madison

by Martin Storey



## SIZE

	S/M	L	XL/XXL
To fit bust			
	81-97	102-107	112-127 cm
	32-38	40-42	44-50 in

## YARN

Rowan Creative Focus™ Worsted

8 9 10 x 100gm

(photographed in Nickel 00401)

## NEEDLES

1 pair 4½mm (no 7) (US 7) needles

4½mm (no 7) (US 7) long circular needle (if required)

Cable needle

## TENSION

20 sts and 24 rows to 10cm measured over st st using 4½mm (no 7) (US 7) needles. Cable panel (120 sts) meas 44 cm.

## SPECIAL ABBREVIATIONS

**C6B** = slip next 3 sts onto cable needle and leave at back of work, K3, then K3 from cable needle; **C4R** = Slip next st onto cable needle and hold at back of work, K3, then P1 from cable needle;

**C4L** = slip next 3 sts onto cable needle and hold at front of work, P1, then K3 from cable needle.

## MAIN SECTION

Using 4½mm (US 7) needles or 4½mm (US 7) circular needle cast on 228 [244: 260] sts.

**Row 1(RS):** K1, (P1, K1) 3 times, K47 [55: 63], P4, \* K6, P12, K6, P12, K6 \*, P6, K6, P4, K6, P6, rep from \* to \* P4, K47 [55: 63], (K1, P1) 3 times, K1.

**Row 2:** K1, (P1, K1) 3 times, P47 [55: 63], K4, \* P6, K12, P6, K12, P6 \*, K6, P6, K4, P6, K6, rep from \* to \* K4, P47 [55: 63], (K1, P1) 3 times, K1.

**Row 3:** As row 1.

**Row 4:** As row 2.

Now place chart as follows:-

**Next row:** K1, (P1, K1) 3 times, K47 [55: 63], work next 120 sts as row 1 of chart, K47 [55: 63], (K1, P1) 3 times, K1.

**Next row:** K1, (P1, K1) 3 times, P47 [55: 63] work next 120 sts as row 2 of chart, P47 [55: 63], (K1, P1) 3 times, K1.

These 2 rows set the sts – chart with st st and moss st either side.

Keeping chart correct, repeating 42 rows of chart throughout, cont as follows:-

Work 114 [154: 152] rows more, ending with RS facing for next row.

## Divide for neck

**Next row (RS):** Patt 114 [122: 130], turn and leave rem sts on a stitch holder

Keeping patt correct cont in patt from chart for a further 61 [65: 69] rows, ending with RS facing for next row.

Leave these sts on a spare needle. Do not break off yarn.

With RS facing rejoin yarn to 114 [122: 130] sts left on stitch holder and keeping patt correct work 62 [66: 70] rows, ending with RS facing for next row. Break off yarn.

Leave these sts on a second spare needle.

## Join sections

**Next row (RS):** Patt 114 [122: 130] sts from first spare needle then 114 [122: 130] sts from second spare needle. 228 [244: 260] sts.

Cont in patt for a further 115 [155: 153] rows, ending with RS facing for next row.

Work rows 1 to 4, ending with RS facing for next row.

Cast off in patt.

## MAKING UP

Press as described on the information page.

Fold main section in half by placing moss st edge to moss st edge and place markers on cast-on and cast-off edges 10 [11: 12] cm either side of fold to denote cuffs.

## Cuffs (Both alike)

With RS facing using 4½mm (US 7) needles pick up and knit 50 [54: 58] sts between one set of markers.

**Row 1 (WS):** \* P2, K2, rep from \* to last 2 sts, P2.

**Row 2:** \* K2, P2, rep from \* to last 2 sts, K2.

These 2 rows form rib.

Cont in rib until cuff meas 24 cm from pick up, ending with RS facing for next row. Cast off in rib.

**Borders (both alike)**

With RS facing using 4½mm (US 7) needles pick up and knit 205 [221: 237] sts along entire cast-on or cast-off edge (picking up evenly around pick up edge of cuff).

**Row 1 (WS):** \* K1, P1, rep from \* to last st, K1.

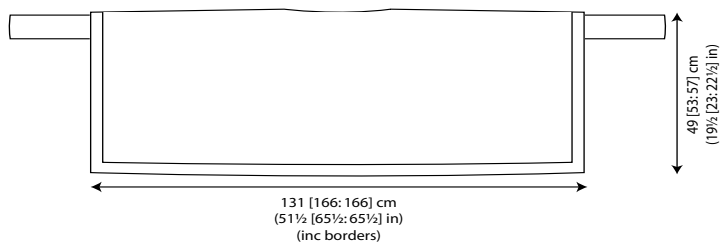
**Row 2:** As row 1.

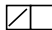


These 2 rows form moss st.

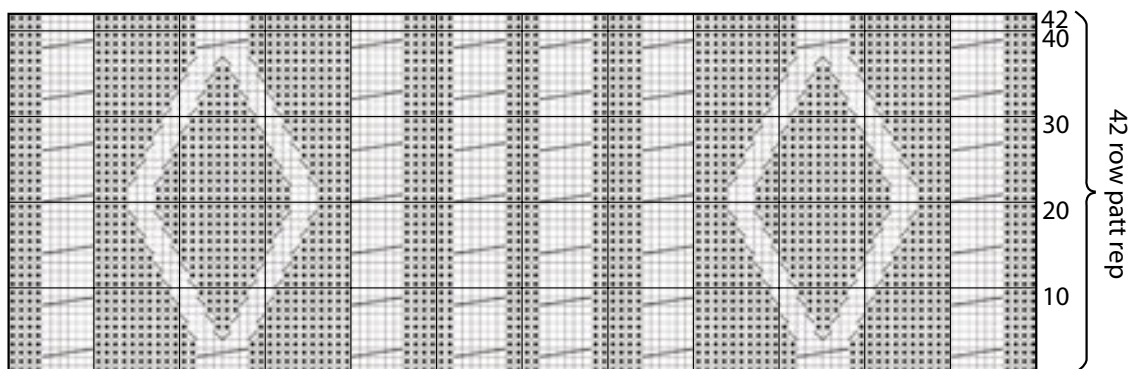
Work 7 rows more in moss st. Cast off in moss st.

Join cuff seams.

See information page for finishing instructions.



- key
- K on RS, P on WS
  - P on RS, K on WS
  -  C4R
  -  C4L
  -  C6B



STORE LOCATOR

INFORMATION PAGES

If you're having difficulty viewing or printing our PDF patterns, please ensure you have the latest version of Adobe Acrobat Reader. Download the latest version here; <http://get.adobe.com/reader/>

All right reserved. Reproduction in whole or any part of all material, including illustrations and designs, in this publication/pattern is strictly forbidden and is sold on the condition that it is used for non commercial purposes. No part may be reproduced, stored in a retrieval system, or transmitted in any form or by any means electronic, electrostatic, magnetic tape, mechanical, photocopying, recording or otherwise without prior permission of the copyright owners having been given in writing. Yarn quantities are approximate and are based on average requirements. Images and shades are for guidance only as colours may not display accurately on screen or in printed format. Contact your local stockist to view a fringed (not digital reproduction) yarn shade card.

