

R O W A N



# Cammeo

By Marie Wallin





# Cammeo

by Marie Wallin



## SIZE

S	M	L	XL	XXL	
To fit bust					
81-86	91-97	102-107	112-117	122-127	cm
32-34	36-38	40-42	44-46	48-50	in

## YARN

### Cotton Glacé

16	18	20	22	24	x 50gm
----	----	----	----	----	--------

(photographed in Shell 845)

## NEEDLES

- 1 pair 2¾mm (no 12) (US 2) needles
- 1 pair 3¾mm (no 10) (US 3) needles

## TENSION

27 sts and 33 rows to 10 cm measured over patt using 3¾mm (US 3) needles.

## SPECIAL ABBREVIATIONS

**double inc** = (K1 tbl, K1) into next st, insert left needle point behind vertical strand that runs downwards from between the 2 sts just made and K tbl into this loop; **single inc** = insert right needle point downwards into back of st on row below next st on left needle and K into this loop, then K st on left needle.

**Pattern note:** The number of sts varies whilst working patt. All st counts given presume there are 12 sts in each patt rep **at all times**. You may find it easiest to place markers between each 12 st patt rep. Work in patt between markers, moving markers in (or out) as required when working shapings, and working end sts of rows in st or rev st st.

## BACK

Using 2¾mm (US 2) needles cast on 146 [158: 182: 194: 218] sts.

**Row 1 (RS):** K2, \*P2, K2, rep from \* to end.

**Row 2:** P2, \*K2, P2, rep from \* to end.

These 2 rows form rib.

Cont in rib for a further 32 rows, inc 1 st at end of last row and ending with RS facing for next row. 147 [159: 183: 195: 219] sts.

Change to 3¾mm (US 3) needles.

Beg and ending rows as indicated, repeating the 12 st patt repeat 11 [12: 14: 15: 17] times across each row and repeating the 24 row patt repeat throughout, cont in patt from chart for body (see pattern note) as folls:

Cont straight until back meas 80 [82: 84: 86: 88] cm, ending with RS facing for next row.

### Shape shoulders

Keeping patt correct, cast off 4 [5: 6: 7: 9] sts at beg of next 4 [8: 2: 6: 8] rows, then 5 [-: 7: 8: -] sts at beg of foll 4 [-: 6: 2: -] rows.

111 [119: 129: 137: 147] sts.

### Shape back neck

**Next row (RS):** Cast off 5 [6: 7: 8: 9] sts, patt until there are 20 [23: 26: 29: 32] sts on right needle and turn, leaving rem sts on a holder. Work each side of neck separately.

Keeping patt correct, dec 1 st at neck edge of next 5 rows, ending with RS facing for next row, **and at same time** cast off 5 [6: 7: 8: 9] sts at beg of 2nd and foll alt row.

Cast off rem 5 [6: 7: 8: 9] sts.

With RS facing, slip centre 61 [61: 63: 63: 65] sts onto a holder, rejoin yarn and patt to end.

Complete to match first side, reversing shapings.

## FRONT

Work as given for back until 2 [2: 4: 4: 6] rows less have been worked than on back to beg of shoulder shapings.

### Shape front neck

**Next row (RS):** Patt 48 [54: 66: 72: 84] sts and turn, leaving rem sts on a holder.

Work each side of neck separately.

Keeping patt correct, dec 1 st at neck edge of next 1 [1: 3: 3: 5] rows, ending with RS facing for next row. 47 [53: 63: 69: 79] sts.

### Shape shoulder

Cast off 4 [5: 6: 7: 9] sts at beg of next and foll 1 [3: 0: 2: 6] alt rows,

then 5 [6: 7: 8: -] sts at beg of foll 5 [3: 6: 4: -] alt rows **and at same time** dec 1 st at neck edge of next 7 [7: 5: 5: 3] rows, then on foll 2 [2: 3: 3: 4] alt rows.

Work 1 row, ending with RS facing for next row.

Cast off rem 5 [6: 7: 8: 9] sts.

With RS facing, slip centre 51 sts onto a holder, rejoin yarn and patt to end.

Complete to match first side, reversing shapings.

## SLEEVES

Using 2¼mm (US 2) needles cast on 62 [62: 66: 66: 66] sts.

Beg with row 1, work in rib as given for back for 28 rows, inc [inc: dec: dec: inc] 1 st at end of last row and ending with RS facing for next row. 63 [63: 65: 65: 67] sts.

Change to 3¼mm (US 3) needles.

Beg and ending rows as indicated, repeating the 12 st patt repeat 4 times across each row and repeating the 24 row patt repeat throughout, cont in patt from chart for sleeve (see pattern note) as folls:

Inc 1 st at each end of 5th [3rd: 3rd: 3rd: 3rd] and every foll 6th [4th: 4th: 4th: 4th] row to 89 [75: 87: 99: 113] sts, then on every foll 8th [6th: 6th: 6th: -] row until there are 91 [97: 103: 107: -] sts, taking inc sts into st st or rev st st until there are sufficient to take into patt.

Cont straight until sleeve meas 39 [40: 41: 41: 41] cm, ending with RS facing for next row.

Cast off.

## MAKING UP

Press as described on the information page.

Join right shoulder seam using back stitch, or mattress stitch if preferred.

## Neckband

With RS facing and using 2¼mm (US 2) needles, pick up and knit 14 [14: 17: 17: 18] sts down left side of front neck, K across 51 sts on front holder dec 3 sts evenly, pick up and knit 14 [14: 17: 17: 18] sts up right side of front neck, and 6 sts down right side of back neck, K across 61 [61: 63: 63: 65] sts on back holder dec 3 sts evenly, then pick up and knit 6 sts up left side of back neck.

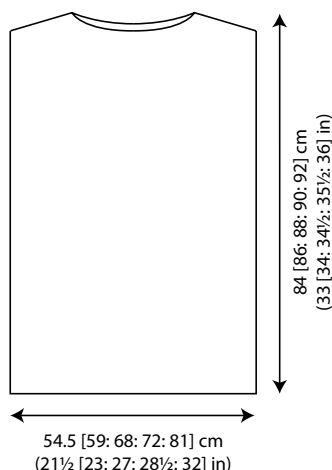
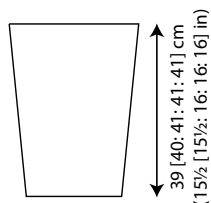
146 [146: 154: 154: 158] sts.

Beg with row 2, work in rib as given for back for 17 rows, ending with RS facing for next row.

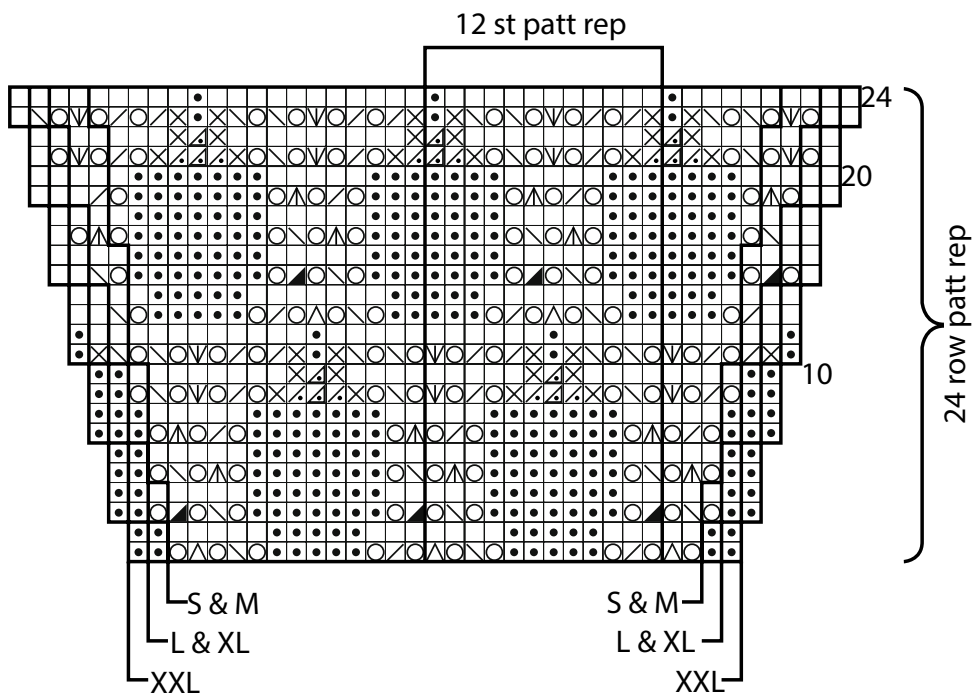
Cast off in rib.

Join left shoulder and neckband seam. Mark points along side seam edges 17 [18: 19: 20: 21] cm either side of shoulder seams (to denote base of armholes).

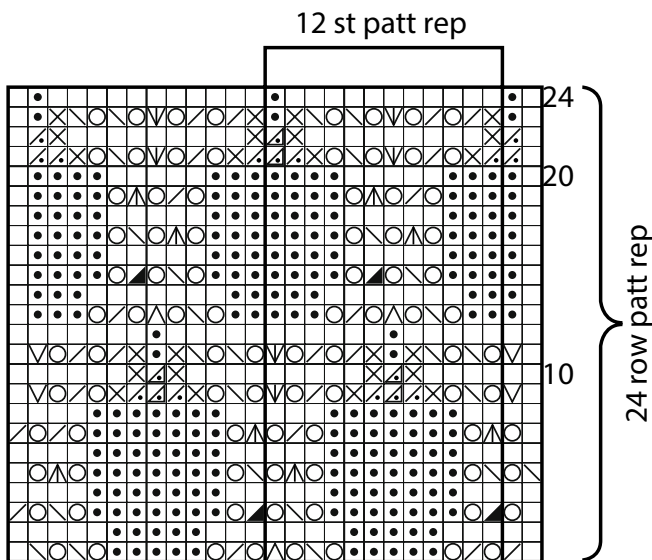
See information page for finishing instructions, setting in sleeves using the straight cast-off method.



## Sleeve Chart



## Body Chart



### key

- |                   |                |
|-------------------|----------------|
| K on RS, P on WS  | K3tog          |
| P on RS, K on WS  | sl2, K1, p2sso |
| K2tog             | P2tog          |
| yfwd              | P3tog          |
| sl1, K2tog, pssso | double inc     |
| sl1, K1, pssso    | no stitch      |
|                   | single inc     |

To find your local stockist  
click here

To view the information  
guides click here

**STORE  
LOCATOR**

**INFORMATION  
PAGES**

All right reserved. Reproduction in whole or any part of all material, including illustrations and designs, in this publication/pattern is strictly forbidden and is sold on the condition that it is used for non commercial purposes. No part may be reproduced, stored in a retrieval system, or transmitted in any form or by any means electronic, electrostatic, magnetic tape, mechanical, photocopying, recording or otherwise without prior permission of the copyright owners having been given in writing. Yarn quantities are approximate and are based on average requirements. Images and shades are for guidance only as colours may not display accurately on screen or in printed format. Contact your local stockist to view a fringed (not digital reproduction) yarn shade card.

© Copyright Coats Crafts UK 2014 Green Lane Mill, Holmfirth, West Yorkshire, England, HD9 2DX E-mail: mail@knitrowan.com Web: www.knitrowan.com

