

R O  A N

Heatwave Throw

By Kaffe Fassett





Heatwave Throw

by Kaffe Fassett



YARN

Rowan Revive & Cotton Glace

Revive

A	462	Basalt	3 x 50gm
B	467	Ironstone	5 x 50gm
C	460	Quartz	3 x 50gm
D	464	Granite	3 x 50gm
E	463	Pink Granite	2 x 50gm

Cotton Glace

F	829	Twilight	4 x 50gm
G	445	Blood Orange	3 x 50gm
H	841	Garnet	4 x 50gm
I	814	Shoot	2 x 50gm
J	724	Bubbles	2 x 50gm
K	832	Persimmon	3 x 50gm
L	746	Nightshade	4 x 50gm
M	837	Baked Red	2 x 50gm
N	833	Ochre	2 x 50gm
O	747	Candy Floss	2 x 50gm

NEEDLES

1 pair 3 $\frac{3}{4}$ mm (no 5) (US 9) needles
3.50mm (no 9) (US E4) crochet Hook

TENSION

22 sts and 30 rows to 10 cm measured over intarsia patt using 3 $\frac{3}{4}$ mm (US 9) needles

FINISHED SIZE

Completed throw measures 126cm (49 $\frac{1}{2}$ in) wide and 200cm (78 $\frac{1}{2}$ in) long

Using 3 $\frac{3}{4}$ mm (US 9) needles and yarn B cast on 268sts.
Using the **intarsia** technique as described on the information page, cont in patt from chart working sts twice, which is worked entirely in st st beg with a K row, rep 10 row patt rep until throw meas 194cm ending with RS facing for next row. Cast off.

MAKING UP

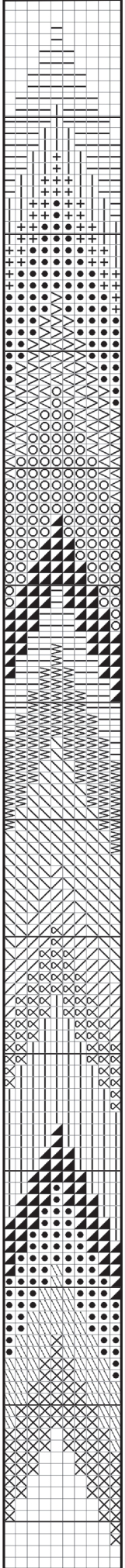
Press as described on the information page.

Edging

With RS facing, using 3.50mm (US E4) crochet hook and yarn B, attach yarn at centre of cast on edge, 1 ch (does NOT count as st), work dc s evenly around entire throw, work 3 dc's into each corner point, ss to dc at beg of round.
Work 4 more rounds, working 3 dc's into each corner, change to yarn L and work 1 more round. Fasten off.

10st patt rep

10



key

- | | | | | | | | | | | | | | |
|---|---|---|---|---|---|---|---|---|---|---|---|---|---|
| □ | A | ◻ | D | □ | G | ◻ | J | ◻ | M | ○ | N | ○ | O |
| ◻ | B | ◻ | E | ◻ | H | ◻ | K | ◻ | L | ◻ | N | ◻ | O |
| ◻ | C | ◻ | F | ◻ | I | ◻ | L | ◻ | M | ◻ | O | ◻ | O |