

Bunny Cardigan

by Martin Storey



SIZE

To fit age, approx
0-3 3-6 6-12 12-18 months

To fit chest
41 46 51 56 cm
16 18 20 22 in

Actual size
45 51 56 62 cm
17½ 20 22 24½ in

Finished length
21 25 29 33 cm
8½ 10 11½ 13 in

Sleeve length to underarm
13 16 20 26 cm
5 6½ 8 10 in

YARN

Pure Wool 4 ply

Main Shade (Stream 460)
2 2 2 3 x 50gm

Contrast (Snow 412)
1 1 1 1 x 50gm

Quantities of yarn are approximate as they are based on average requirements.

Check actual yarn colour - as printing may not match yarn exactly.

Needles

Pair each of 2¼mm (UK 12/US 2) and 3¼mm (UK 10/US 3) needles.

4 x small buttons.

Tension

28 sts and 36 rows to 10 cm (stocking stitch) on 3¼mm (US 3) needles or size needed to achieve stated tension.

BACK

With 2¼mm (US 2) needles and MS, cast on 63 [71, 79, 87] sts.

Row 1 (RS): K0 [0, 2, 0], P3 [1, 3, 3], *K3, P3; rep from * to last 0 [4, 2, 0] sts, K0 [3, 2, 0], PO [1, 0, 0].

Row 2: P0 [0, 2, 0], K3 [1, 3, 3], *P3, K3; rep from * to last 0 [4, 2, 0] sts, P0 [3, 2, 0], K0 [1, 0, 0].

These 2 rows form rib.

Work in rib for a further 6 rows, ending with RS facing for next row.

Change to 3¼mm (US 3) needles.

Starting with a K row, work in stocking st until Back meas 10 [13, 16, 19] cm, ending with RS facing for next row.

Shape armholes

Cast off 3 sts at beg of next 2 rows. 57 [65, 73, 81] sts.

Dec 1 st at each end of next 4 rows. 49 [57, 65, 73] sts.

Cont straight until armholes meas 11 [12, 13, 14] cm, ending with RS facing for next row.

Shape shoulders and back neck

Next row (RS): cast off 6 [7, 9, 10] sts, K until there are 7 [9, 10, 12] sts on right needle, turn and work this side first.

Dec 1 st at beg of next row.

Cast off rem 6 [8, 9, 11] sts.

With RS facing, rejoin yarn to rem sts, cast off centre 23 [25, 27, 29] sts, K to end. Work to match first side, reversing shapings.

LEFT FRONT

With 2¼mm (US 2) needles and MS, cast on 32 [36, 40, 44] sts.

Row 1 (RS): K0 [0, 2, 0], P3 [1, 3, 3], *K3, P3; rep from * to

last 5 sts, K3, P2.

Row 2 - K2, *P3, K3; rep from * to last 0 [4, 2, 0] sts, P0 [3, 2, 0], K0 [1, 0, 0].

These 2 rows form rib.

Work in rib for a further 6 rows, ending with RS facing for next row.

Change to 3¼mm (US 3) needles.

Starting with a K row, work in stocking st for 4 rows, ending with RS facing for next row.

Place Motif

Next row (RS): K3 [5, 7, 9], work next 27 sts as row 1 of Chart A, K to end.

Next row - P2 [4, 6, 8], work next 27 sts as row 2 of Chart A, P to end.

These 2 rows set position of Chart A with stocking st at both sides.

Working rem 28 rows of Chart A and then completing work in stocking st using MS only, proceed thus: Cont straight until Left Front matches Back to start of armhole shaping, ending with RS facing for next row.

Shape armhole

Cast off 3 sts at beg of next row. 29 [33, 37, 41] sts.

Work 1 row.

Shape front slope

Dec 1 st at armhole edge of next 4 rows **and at same time** dec 1 st at front slope edge of next and foll alt row. 23 [27, 31, 35] sts.

Dec 1 st at front slope edge only on next and foll 7 [7, 8, 8] alt rows, then on every foll 4th row until 12 [15, 18, 21] sts rem.

Cont straight until Left Front matches back to start of shoulder shaping, ending with RS facing for next row.

Shape shoulder

Cast off 6 [7, 9, 10] sts at beg of next row.

Work 1 row.

Cast off rem 6 [8, 9, 11] sts.

RIGHT FRONT

With 2¼mm (US 2) needles and MS, cast on 32 [36, 40, 44] sts.

Row 1 (RS): P2, *K3, P3; rep from * to last 0 [4, 2, 0] sts, K0 [3, 2, 0], P0 [1, 0, 0].

Row 2: P0 [0, 2, 0], K3 [1, 3, 3], *P3, K3; rep from * to last 5 sts, P3, K2.

These 2 rows form rib.

Work in rib for a further 6 rows, ending with RS facing for next row.

Change to 3¼mm (US 3) needles.

Starting with a K row, work in stocking st for 4 rows, ending with RS facing for next row.

Place Motif

Next row (RS): K2 [4, 6, 8], work next 27 sts as row 1 of Chart B, K to end.

Next row: P3 [5, 7, 9], work next 27 sts as row 2 of Chart B, P to end.

These 2 rows set position of Chart B with stocking st at both sides.

Working rem 28 rows of Chart B and then completing work in stocking st using MS only, complete to match Left Front, reversing shapings, working an extra row before start of

armhole and shoulder shaping.

SLEEVES

With 2¼mm (US 2) needles and MS, cast on 41 [43, 45, 47] sts.

Row 1: (RS), K1 [2,3,1], P3, *K3, P3; rep from * to last 1 [2, 3, 1] sts, K1 [2, 3, 1].

Row 2: P1 [2,3,1], K3, *P3, K3; rep from * to last 1 [2, 3, 1] sts, P1 [2, 3, 1].

These 2 rows form rib.

Work in rib for a further 6 rows, ending with RS facing for next row.

Change to 3¼mm (US 3) needles.

Starting with a K row, work in stocking st, shaping sides by inc 1 st at each end of next and every fall 4th row until there are 57 [61, 63, 55] sts.

46, 51 and 56 cm sizes: Inc 1 st at each end of every fall 6th row until there are [63, 69, 75] sts.

All sizes: Cont straight until Sleeve meas 13 [16, 20, 26] cm, ending with RS facing for next row.

Shape top

Cast off 3 sts at beg of next 2 rows. 51 [57, 63, 69] sts.

Dec 1 st at each end of next and foll 3 alt rows, then on foll row, ending with RS facing for next row.

Cast off rem 41 [47, 53, 59] sts.

MAKE UP

Press lightly under a damp cloth using a warm iron.

Join both shoulder seams.

Front Border

With RS facing, 2¼mm (US 2) needles and MS, starting and ending at cast-on edges, **knit up** 31 [40, 49, 58] sts up right front opening edge to start of front slop shaping, 31 [35, 40, 43] sts up right front slope to shoulder, 25 [29, 31, 31] sts from back, 31 [35, 40, 43] sts down left front slope to start of front slope shaping, then 31 [40, 49, 58] sts down left front opening edge. 149 [179, 209, 233] sts.

Row 1 (WS): K1, *P3, K3; rep from * to last 4 sts, P3, K1.

Row 2: K4, *P3, K3; rep from * to last st, K1.

These 2 rows form rib.

Work in rib for a further 1 row, ending with RS facing for next row.

Girls version only:

Row 4 (RS): rib 2, work 2 tog, yrn (to make first buttonhole), *rib 7 [10, 13, 16], work 2 tog, yrn (to make a buttonhole); rep from * twice more, rib to end.

Boys version only:

Row 4 (RS): rib to last 31 [40, 49, 58] sts, yrn (to make first buttonhole), work 2 tog, *rib 7 [10, 13, 16], yrn (to make a buttonhole), work 2 tog; rep from * twice more, rib 2.

Both versions: Work in rib for 1 row more.

Cast off in rib.

Matching centre of cast-off edge of sleeve to shoulder seam and shaped edges at underarm, sew Sleeves to Back and Fronts. Join side and sleeve seams.

Sew on buttons.

Using C, make two 3 cm diameter pompoms and attach to Fronts to form tails of rabbits.

Chart A

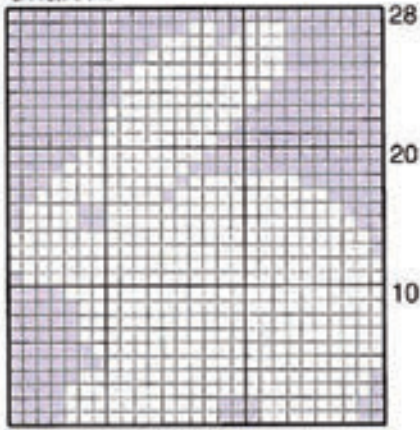
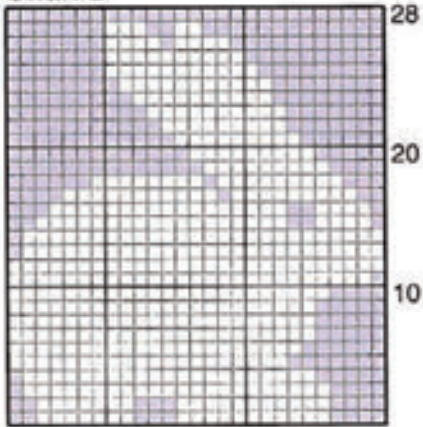


Chart B



Key

- Using MS -
K on RS rows,
P on WS rows
- Using C -
K on RS rows,
P on WS rows

