

# Solange

by Sarah Hatton



## SIZE

	S	M	L	
To fit age	10-11	12-13	14-16	years

## YARN

### Rowan Cocoon

8 9 9 x 50gm  
(photographed in Aubergine 287)

## NEEDLES

1 pair 7mm (no 2) (US 10½) needles  
1 pair 8mm (no 0) (US 11) needles  
Cable needle

**BUTTONS** – 1 x BN1203

## TENSION

11 sts and 14 rows to 10 cm measured over rev st st using 8mm (US 11) needles. Cable panel (18 sts) measures 13.5 cm.

## SPECIAL ABBREVIATIONS

**Cr2R** = slip next st onto cable needle and leave at back of work, K1, then P1 from cable needle; **Cr2L** = slip next st onto cable needle and leave at front of work, P1, then K1 from cable needle; **C6B** = slip next 3 sts onto cable needle and leave at back of work, K3, then K3 from cable needle.

## BACK

Using 7mm (US 10½) needles cast on 47 [49: 51] sts.

**Row 1 (RS):** P1 [0: 1], \*K1, P1, rep from \* to last 0 [1: 0] st, K0 [1: 0].

**Row 2:** K1 [0: 1], \*P1, K1, rep from \* to last 0 [1: 0] st, P0 [1: 0]. These 2 rows form rib.

Work in rib for 1 row more, ending with **WS** facing for next row.

**Row 4 (WS):** Rib 8 [9: 10], M1, (rib 2, M1) 3 times, rib 19, M1, (rib 2, M1) 3 times, rib to end. 55 [57: 59] sts.

Change to 8mm (US 11) needles.

**Row 5 (RS):** P4 [5: 6], work next 18 sts as row 1 of cable panel, P11, work next 18 sts as row 1 of cable panel, P to end.

**Row 6:** K4 [5: 6], work next 18 sts as row 2 of cable panel, K11, work next 18 sts as row 2 of cable panel, K to end.

These 2 rows set the sts – 2 cable panels with rev st st at sides and between.

Repeating the 16 row patt rep throughout, cont as set for a further 45 rows, ending after chart row 15 and with **WS** facing for next row.

**Next row (WS):** K9 [10: 11], (P2tog) twice, (P2tog tbl) twice, K21, (P2tog) twice, (P2tog tbl) twice, K to end. 47 [49: 51] sts.

## Shape for cap sleeves

**Next row (RS):** Inc in first st, K1, \*P1, K1, rep from \* to last st, inc in last st.

**Next row:** Inc in first st, P1, \*K1, P1, rep from \* to last st, inc in last st.

Last 2 rows form moss st and beg cap sleeve shaping.

Rep last 2 rows once more. 55 [57: 59] sts.

Place markers at both ends of last row to denote base of armholes. Cont in moss st until work meas 18 [19: 20] cm from markers, ending with RS facing for next row.

## Shape shoulders

Cast off 9 [9: 10] sts at beg of next 2 rows, then 10 sts at beg of foll 2 rows.

Cast off rem 17 [19: 19] sts.

## LEFT FRONT

Using 7mm (US 10 1/2) needles cast on 27 [28: 29] sts.

**Row 1 (RS):** P1 [0: 1], \*K1, P1, rep from \* to last 2 sts, K2.

**Row 2:** K1, \*P1, K1, rep from \* to last 0 [1: 0] st, P0 [1: 0].

These 2 rows form rib.

Work in rib for 1 row more, ending with **WS** facing for next row.

**Row 4 (WS):** Rib 13, M1, (rib 2, M1) 3 times, rib to end. 31 [32: 33] sts.

Change to 8mm (US 11) needles.

**Row 5 (RS):** P4 [5: 6], work next 18 sts as row 1 of cable panel, P3, (K1, P1) twice, K2.

**Row 6:** (K1, P1) 3 times, K3, work next 18 sts as row 2 of cable panel, K to end.

These 2 rows set the sts – cable panel with rev st st either side and front opening edge 6 sts still in rib.

Repeating the 16 row patt rep throughout, cont as set for a further 45 rows, ending after chart row 15 and with **WS** facing for next row.

**Next row (WS):** (K1, P1) 3 times, K8, (P2tog) twice, (P2tog tbl) twice, K to end. 27 [28: 29] sts.

#### Shape for cap sleeve

**Next row (RS):** Inc in first st, K1, \*P1, K1, rep from \* to last 1 [0: 1] st, P1 [0: 1].

**Next row:** K0 [1: 0], P1, \*K1, P1, rep from \* to last st, inc in last st. Last 2 rows form moss st and beg cap sleeve shaping.

Rep last 2 rows once more. 31 [32: 33] sts.

Place marker at end of last row to denote base of armhole.

#### Shape front slope

Cont in moss st, dec 1 st at end of next and foll 9 [10: 9] alt rows, then on 2 [2: 3] foll 4th rows. 19 [19: 20] sts.

Cont straight until left front matches back to beg of shoulder shaping, ending with RS facing for next row.

#### Shape shoulder

Cast off 9 [9: 10] sts at beg of next row.

Work 1 row.

Cast off rem 10 sts.

#### RIGHT FRONT

Using 7mm (US 10 1/2) needles cast on 27 [28: 29] sts.

**Row 1 (RS):** K2, \*P1, K1, rep from \* to last 1 [0: 1] st, P1 [0: 1].

**Row 2:** P0 [1: 0], \*K1, P1, rep from \* to last st, K1.

These 2 rows form rib.

Work in rib for 1 row more, ending with **WS** facing for next row.

**Row 4 (WS):** Rib 8 [9: 10], M1, (rib 2, M1) 3 times, rib to end. 31 [32: 33] sts.

Change to 8mm (US 11) needles.

**Row 5 (RS):** K2, (P1, K1) twice, P3, work next 18 sts as row 1 of cable panel, P4 [5: 6].

**Row 6:** K4 [5: 6], work next 18 sts as row 2 of cable panel, K3, (P1, K1) 3 times.

These 2 rows set the sts – cable panel with rev st st either side and front opening edge 6 sts still in rib.

Repeating the 16 row patt rep throughout, cont as set for a further 45 rows, ending after chart row 15 and with **WS** facing for next row.

**Next row (WS):** K9 [10: 11], (P2tog) twice, (P2tog tbl) twice, K8, (P1, K1) 3 times. 27 [28: 29] sts.

#### Shape for cap sleeve

**Next row (RS):** P1 [0: 1], K1, \*P1, K1, rep from \* to last st, inc in last st.

**Next row:** Inc in first st, P1, \*K1, P1, rep from \* to last 0 [1: 0] st, K0 [1: 0].

Last 2 rows form moss st and beg cap sleeve shaping.

Rep last 2 rows once more. 31 [32: 33] sts.

Place marker at beg of last row to denote base of armhole.

#### Shape front slope

Cont in moss st, dec 1 st at beg of next and foll 9 [10: 9] alt rows, then on 2 [2: 3] foll 4th rows. 19 [19: 20] sts.

Cont straight until right front matches back to beg of shoulder shaping, ending with **WS** facing for next row.

#### Shape shoulder

Cast off 9 [9: 10] sts at beg of next row.

Work 1 row.

Cast off rem 10 sts.

#### MAKING UP

Press.

Join both shoulder seams using back stitch, or mattress stitch if preferred.

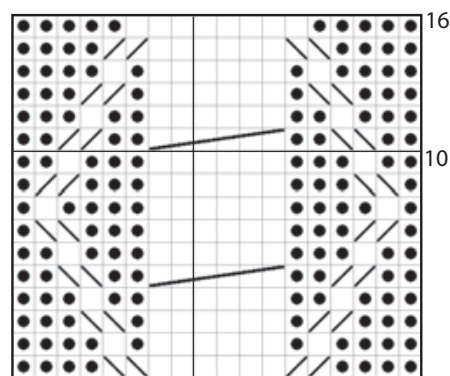
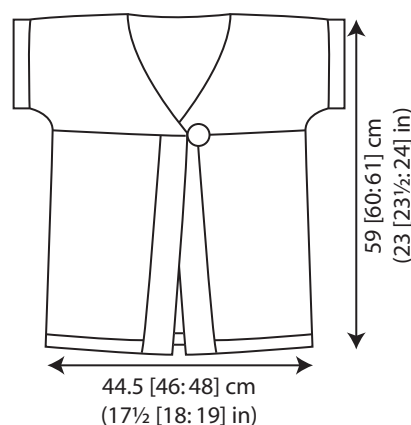
#### Armhole borders (both alike)

With RS facing and using 7mm (US 10½) needles, pick up and knit 41 [43: 45] sts evenly along armhole edge between markers.

Beg with row 2, work in rib as given for back for 4 rows, ending with **WS** facing for next row.

Cast off in rib (on **WS**).

See information page for finishing instructions. Make button loop and attach button to fasten front edges as in photograph.



#### key

□	K on RS, P on WS
●	P on RS, K on WS
▧	Cr2R
▨	Cr2L
▩	C6B