

R O W A N



# Addison

By Sarah Hatton



# Addison

by Sarah Hatton



## YARN

	S	M	L	
To fit age	10-11	12-13	14-16	years

## YARN

### Rowan Pure Wool Aran

	8	9	9	x 100gm
--	---	---	---	---------

(photographed in Vert 686)

## NEEDLES

1 pair 3¾mm (no 9) (US 5) needles  
 1 pair 4½mm (no 7) (US 7) needles  
 Cable needle

**BUTTONS** - 4 x BN1367

## TENSION

19 sts and 25 rows to 10 cm measured over rev st st using 4½mm (US 7) needles. Cable panel (24 sts) measures 9.5 cm.

## SPECIAL ABBREVIATIONS

**Cr3R** = slip next st onto cable needle and leave at back of work, K2, then P1 from cable needle; **Cr3L** = slip next 2 sts onto cable needle and leave at front of work, P1, then K2 from cable needle; **C4B** = slip next 2 sts onto cable needle and leave at back of work, K2, then K2 from cable needle; **C4F** = slip next 2 sts onto cable needle and leave at front of work, K2, then K2 from cable needle.

## BACK

Using 4½mm (US 7) needles cast on 83 [87: 91] sts.

**Row 1 (RS):** K2, \*P1, K1, rep from \* to last st, K1.

**Row 2:** K1, \*P1, K1, rep from \* to end.

These 2 rows form rib.

Work in rib for a further 9 rows, ending with **WS** facing for next row.

**Row 12 (WS):** Rib 17 [18: 19], \*inc once in each of next 2 sts, (rib 6, inc once in each of next 2 sts) twice\*, rib 13 [15: 17, rep from \* to \* once more, rib to end. 95 [99: 103] sts.

Now work in patt, placing cable panels as folls:

**Row 1 (RS):** Rib 8, P9 [10: 11], work next 24 sts as row 1 of cable panel, P13 [15: 17], work next 24 sts as row 1 of cable panel, P9 [10: 11], rib 8.

**Row 2:** Rib 8, K9 [10: 11], work next 24 sts as row 2 of cable panel, K13 [15: 17], work next 24 sts as row 2 of cable panel, K9 [10: 11], rib 8.

These 2 rows set the sts - 2 cable panels with rev st st between and at sides, with first and last 8 sts of every row still worked in rib.

Keeping sts correct as now set and repeating the 32 and 36 row patt repeats throughout, cont as folls:

Work 12 rows, ending with RS facing for next row.

**Next row (RS):** P17 [18: 19], work next 24 sts of cable panel, P13 [15: 17], work next 24 sts of cable panel, P17 [18: 19].

**Next row:** K17 [18: 19], work next 24 sts of cable panel, K13 [15: 17], work next 24 sts of cable panel, K17 [18: 19].

These 2 rows set the sts - 2 cable panels with rev st st between and at sides.

Keeping sts correct as now set, cont straight until back meas 45 [46: 47] cm, ending with RS facing for next row.

## Shape armholes

Keeping patt correct, cast off 3 [4: 5] sts at beg of next 2 rows. 89 [91: 93] sts.

Dec 1 st at each end of next 5 rows, then on foll 3 alt rows. 73 [75: 77] sts.

Cont straight until armhole meas 19 [20: 21] cm, ending with RS facing for next row.

## Shape back neck and shoulders

Cast off 6 sts at beg of next 2 rows. 61 [63: 65] sts.

**Next row (RS):** Cast off 6 sts, patt until there are 9 [10: 10] sts on right needle and turn, leaving rem sts on a holder.

Work each side of neck separately.

Cast off 3 sts at beg of next row.

Cast off rem 6 [7: 7] sts.

With RS facing, rejoin yarn to rem sts, cast off centre 31 [31: 33] sts, patt to end.

Complete to match first side, reversing shapings.

## LEFT FRONT

Using 4½mm (US 7) needles cast on 41 [43: 45] sts.

Work in rib as given for back for 11 rows, ending with **WS** facing for next row.

**Row 12 (WS):** Rib 6 [7: 8], inc once in each of next 2 sts, (rib 6, inc once in each of next 2 sts) twice, rib to end. 47 [49: 51] sts.

Now work in patt, placing cable panels as folls:

**Row 1 (RS):** Rib 8, P9 [10: 11], work next 24 sts as row 1 of cable panel, P6 [7: 8].

**Row 2:** K6 [7: 8], work next 24 sts as row 2 of cable panel, K9 [10: 11], rib 8.

These 2 rows set the sts – cable panel with rev st st at sides, with side seam edge 8 sts still worked in rib.

Keeping sts correct as now set, cont as folls:

Work 12 rows, ending with RS facing for next row.

**Next row (RS):** P17 [18: 19], work next 24 sts of cable panel, P6 [7: 8].

**Next row:** K6 [7: 8], work next 24 sts of cable panel, K17 [18: 19].

These 2 rows set the sts – cable panel with rev st st at sides.

Keeping sts correct as now set, cont straight until left front matches back to beg of armhole shaping, ending with RS facing for next row.

### Shape armhole

Keeping patt correct, cast off 3 [4: 5] sts at beg of next row. 44 [45: 46] sts.

Work 1 row.

Dec 1 st at armhole edge of next 5 rows, then on foll 3 alt rows. 36 [37: 38] sts.

Cont straight until 19 [21: 23] rows less have been worked than on back to beg of shoulder shaping, ending with **WS** facing for next row.

### Shape neck

Keeping patt correct, cast off 9 [8: 8] sts at beg of next row. 27 [29: 30] sts.

Dec 1 st at neck edge of next 5 rows, then on foll 3 [4: 5] alt rows, then on foll 4th row. 18 [19: 19] sts.

Work 3 rows, ending with RS facing for next row.

### Shape shoulder

Cast off 6 sts at beg of next and foll alt row.

Work 1 row.

Cast off rem 6 [7: 7] sts.

## RIGHT FRONT

Using 4½mm (US 7) needles cast on 41 [43: 45] sts.

Work in rib as given for back for 11 rows, ending with **WS** facing for next row.

**Row 12 (WS):** Rib 17 [18: 19], inc once in each of next 2 sts, (rib 6, inc once in each of next 2 sts) twice, rib to end. 47 [49: 51] sts.

Now work in patt, placing cable panels as folls:

**Row 1 (RS):** P6 [7: 8], work next 24 sts as row 1 of cable panel, P9 [10: 11], rib 8.

**Row 2:** Rib 8, K9 [10: 11], work next 24 sts as row 2 of cable panel, K6 [7: 8].

These 2 rows set the sts – cable panel with rev st st at sides, with side seam edge 8 sts still worked in rib.

Keeping sts correct as now set, cont as folls:

Work 12 rows, ending with RS facing for next row.

**Next row (RS):** P6 [7: 8], work next 24 sts of cable panel, P17 [18: 19].

**Next row:** K17 [18: 19], work next 24 sts of cable panel, K6 [7: 8].

These 2 rows set the sts – cable panel with rev st st at sides.

Keeping sts correct as now set, complete to match left front, reversing shapings.

## SLEEVES

Using 3¾mm (US 5) needles cast on 39 [41: 41] sts.

**Row 1 (RS):** K1, \*P1, K1, rep from \* to end.

**Row 2:** P1, \*K1, P1, rep from \* to end.

These 2 rows form rib.

Work in rib for a further 10 rows, ending with RS facing for next row.

Change to 4½mm (US 7) needles.

Beg with a P row, work in rev st st, shaping sides by inc 1 st at each end of 5th [3rd: 3rd] and every foll 6th [6th: 4th] row to 63 [69: 51] sts, then on every foll 8th [-: 6th] row until there are 65 [-: 73] sts.

Cont straight until sleeve meas 42 [43: 44] cm, ending with RS facing for next row.

### Shape top

Cast off 3 [4: 5] sts at beg of next 2 rows. 59 [61: 63] sts.

Dec 1 st at each end of next 5 rows, then on every foll alt row until 41 sts rem, then on foll 9 rows, ending with RS facing for next row. 23 sts.

Cast off 4 sts at beg of next 2 rows.

Cast off rem 15 sts.

## MAKING UP

Press.

Join both shoulder seams using back stitch, or mattress stitch if preferred.

### Button band

With RS facing and using 3¾mm (US 5) needles, pick up and knit 125 [127: 129] sts evenly down left front opening edge, from neck shaping to cast-on edge.

Beg with row 2, work in rib as given for back for 9 rows, ending with RS facing for next row.

Cast off in rib.

### Buttonhole band

With RS facing and using 3¾mm (US 5) needles, pick up and knit 125 [127: 129] sts evenly up right front opening edge, from cast-on edge to neck shaping.

Beg with row 2, work in rib as given for back for 3 rows, ending with RS facing for next row.

**Row 4 (RS):** Rib to last 83 sts, \*yarn, work 2 tog (to make a buttonhole), rib 24, rep from \* twice more, yarn, work 2 tog (to make 4th buttonhole), rib 3.

Work in rib for a further 5 rows, ending with RS facing for next row.

Cast off in rib.

### Hood

Using 3 ¾mm (US 5) needles cast on 149 [151: 153] sts.

Work in rib as given for back for 6 rows, ending with RS facing for next row.

Change to 4½mm (US 7) needles.

Beg with a P row, work in rev st st, dec 1 st at each end of next and foll 7 alt rows. 133 [135: 137] sts.

Cont straight until hood meas 16 cm, ending with RS facing for next row.

### Shape back

Place marker on centre st of last row.

**Row 1 (RS):** P to within 2 sts of marked st, P2tog tbl, P marked st, P2tog, P to end. 131 [133: 135] sts.

Work 3 rows.

**Row 5:** As row 1. 129 [131: 133] sts.

Work 1 row.

**Row 7:** Cast off 6 sts, P to within 2 sts of marked st, P2tog tbl, P marked st, P2tog, P to end. 121 [123: 125] sts.

**Row 8:** Cast off 6 sts, K to within 2 sts of marked st, K2tog, K marked st, K2tog tbl, K to end. 113 [115: 117] sts.

Rep last 2 rows twice more, ending with RS facing for next row.

Cast off rem 81 [83: 85] sts.

Fold hood in half and join shaped cast-off edges to form back seam.

Positioning ends of cast-on edge half way across top of bands and hood seam at centre back neck, sew shaped row-end edges of hood

to neck edge, easing in fullness.

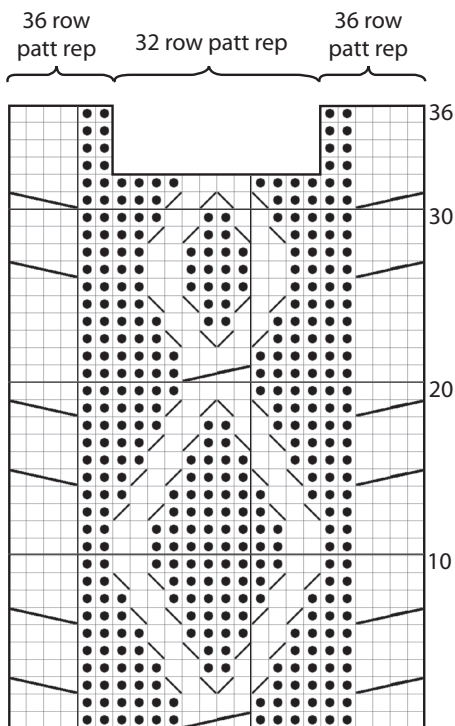
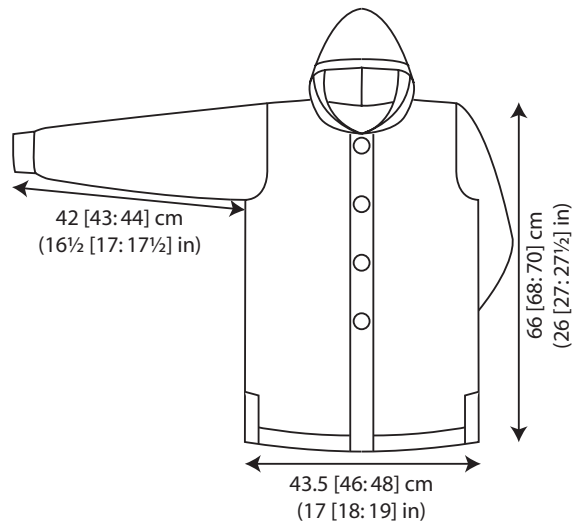
See information page for finishing instructions, setting in sleeves using the set-in method and leaving side seams open for first 26 rows.

**Belt**




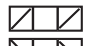
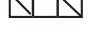

Using 3¾mm (US 5) needles cast on 11 sts.

Work in rib as given for back for 120 cm, ending with RS facing for next row.

Cast off.



key

-  K on RS, P on WS
-  P on RS, K on WS
-  C4B
-  C4F
-  Cr3R
-  Cr3L