

R O  A N

PicKnit Pillow Cushion

By Marie Wallin





PicKnit Pillow Cushion

by Marie Wallin



SIZES

One size only.

TO FIT CUSHION PAD: 48cm x 74cm

FINISHED MEASUREMENT: 46cm x 71cm

Rowan Pure Wool Aran

A. Ivory 670	1 x 100gm balls.
B. Vert 686	1 x 100gm balls.
C. Cedar 674	2 x 100gm balls.
D. Amethyst 682	1 x 100gm balls.
E. Burlesque 689	1 x 100gm balls.
F. Sage 675	1 x 100gm balls.
G. Mid Indigo 694	1 x 100gm balls.
H. Burnt 700	1 x 100gm balls.
I. Banana 698	1 x 100gm balls.

NEEDLES

1 x 4.5mm (UK 7) (US 7) knitting needles.
1 x 4mm (UK 8) (US 6) knitting needles.

BUTTONS

3 x medium sized buttons..

FRONT

SQUARES – 10 in total.

MEASUREMENTS – Each square measures 15cm x 15cm.

SQUARE 1 – Intarsia ‘L’ – make 2

TENSION

19 sts and 25 rows to 10cm measured over stocking stitch

using 4.5mm (US 7) ndles.

‘L’ SQUARE A – make 1

Using G and 4.5mm (US 7) ndles cast on 29 sts.

Working from chart A and using col H where indicated, continue in pattern ending with chart row 38. Cast off.

‘L’ SQUARE B – make 1

Using A and 4.5mm (US 7) ndles cast on 29 sts.

Working from chart B and using col D where indicated, continue in pattern ending with chart row 38. Cast off.

SQUARE 2 – Intarsia ‘O’ – make 3

TENSION

19 sts and 25 rows to 10cm measured over stocking stitch using 4.5mm (US 7) ndles.

‘O’ SQUARE A – make 1

Using A and 4.5mm (US 7) ndles cast on 29 sts.

Working from chart C and using col I where indicated, continue in pattern ending with chart row 38. Cast off.

‘O’ SQUARE B – make 1

Using F and 4.5mm (US 7) ndles cast on 29 sts.

Working from chart D and using col G where indicated, continue in pattern ending with chart row 38. Cast off.

‘O’ SQUARE C – make 1

Using G and 4.5mm (US 7) ndles cast on 29 sts.

Working from chart E and using col A where indicated, continue in pattern ending with chart row 38. Cast off.

SQUARE 3 – Intarsia ‘V’ – make 1

TENSION

19 sts and 25 rows to 10cm measured over stocking stitch using 4.5mm (US 7) ndles.

'V' SQUARE

Using H and 4.5mm (US 7) ndles cast on 29 sts.

Working from chart F and using col G where indicated, continue in pattern ending with chart row 38. Cast off.

SQUARE 4 – Intarsia 'E' – make 1

TENSION

19 sts and 25 rows to 10cm measured over stocking stitch using 4.5mm (US 7) ndles.

'E' SQUARE

Using I and 4.5mm (US 7) ndles cast on 29 sts.

Working from chart G and using col F where indicated, continue in pattern ending with chart row 38. Cast off.

SQUARE 5 – Intarsia 'W' – make 1

TENSION

19 sts and 25 rows to 10cm measured over stocking stitch using 4.5mm (US 7) ndles.

'W' SQUARE

Using E and 4.5mm (US 7) ndles cast on 29 sts.

Working from chart H and using col C where indicated, continue in pattern ending with chart row 38. Cast off.

SQUARE 6 – Intarsia 'Heart' – make 1

TENSION

19 sts and 25 rows to 10cm measured over stocking stitch using 4.5mm (US 7) ndles.

'HEART' SQUARE

Using D and 4.5mm (US 7) ndles cast on 29 sts.

Working from chart I and using col E where indicated, continue in pattern ending with chart row 38. Cast off.

SQUARE 7 – Intarsia 'Snowflake' – make 1

TENSION

19 sts and 25 rows to 10cm measured over stocking stitch using 4.5mm (US 7) ndles.

'SNOWFLAKE' SQUARE

Using C and 4.5mm (US 7) ndles cast on 29 sts.

Working from chart J and using col B where indicated, continue in pattern ending with chart row 38. Cast off.

FRONT FINISHING

Sew all loose ends to WS of each square.

Press each square gently using a warm steam iron on the WS. Sew all the squares together as indicated by the photograph using mattress stitch.

BORDERS

Using H and 4.5mm (US 7) ndles pick up and K 134 sts evenly along the bottom edge of the long side of the cushion. Work 9cm in stocking stitch. Cast off.

Using B and 4.5mm (US 7) ndles pick up and K 134 sts evenly along the top edge of the long side of the cushion. Work 9cm in stocking stitch. Cast off.

BACK

PANEL A

Using C and 4mm (US 6) ndles, cast on 134 sts.

Row 1 (RS): *K2, P2; rep from * to last 2 sts, K2.

Row 2: P2, *K2, P2; rep from * to end.

Rep the last 2 rows until welt measures 2.5cm from cast on edge.

Change to 4.5mm (US 7) ndles and work 28 cm in stocking stitch.

Cast off.

PANEL B

Using C and 4mm (US 6) ndles, cast on 134 sts.

Work welt as given for PANEL A for 4 rows.

Make buttonhole

Next row (RS): Continuing in 2x2 rib, work the next 34 sts, cast off 2 sts, work 30 sts in rib, cast off 2 sts, work 30 sts in rib, cast off 2 sts, work in rib to end.

Next row: Continuing in 2x2 rib, work 34 sts, cast on 2 sts, work 30 sts in rib, cast on 2 sts, work 30 sts in rib, cast on 2 sts, work in rib to end.

Rep rows 1 & 2 for PANEL A until welt measures 2.5cm from cast on edge.

Change to 4.5mm (US 7) ndles and work 15.5cm in stocking stitch.

Cast off.

MAKING UP

Sew all loose ends to WS of each back panel.

Press each panel gently using a warm steam iron on the WS. With RS facing lay the welt of the buttonhole panel on top of the welt of the remaining panel. Tack in place. With RS facing place the front on top of the back and stitch around all sides using mattress stitch.

Press gently again and insert cushion pad.



CHART A

x - G ● - H

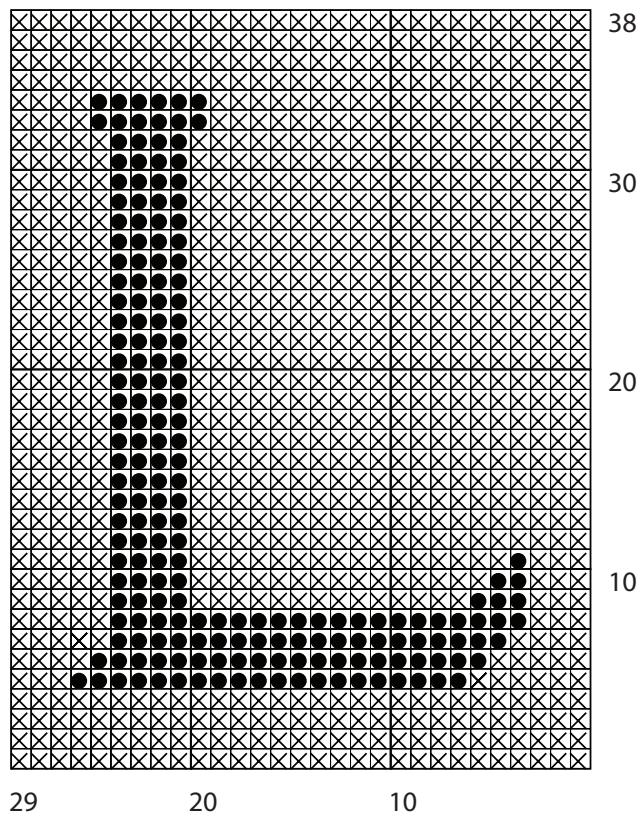


CHART B

□ - A • - D

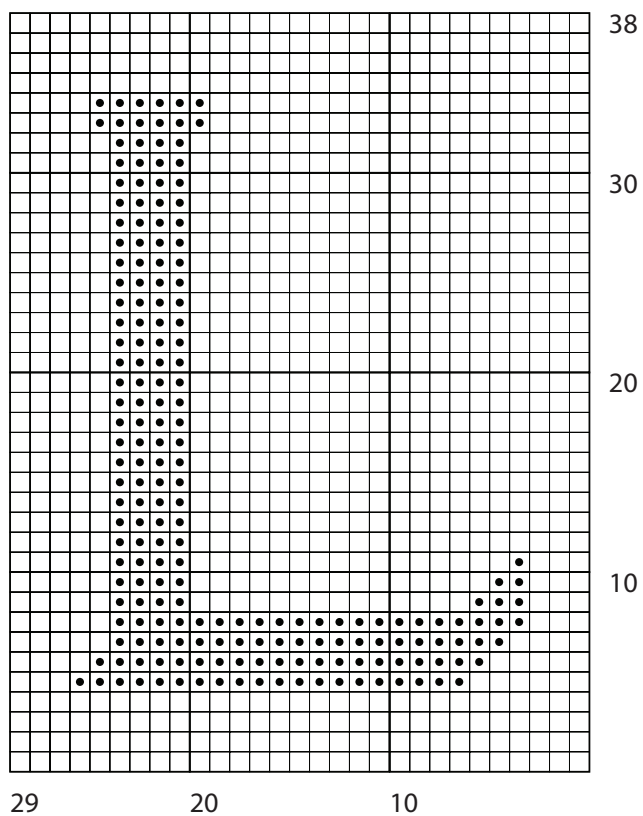


CHART C

□ - A ▲ - I

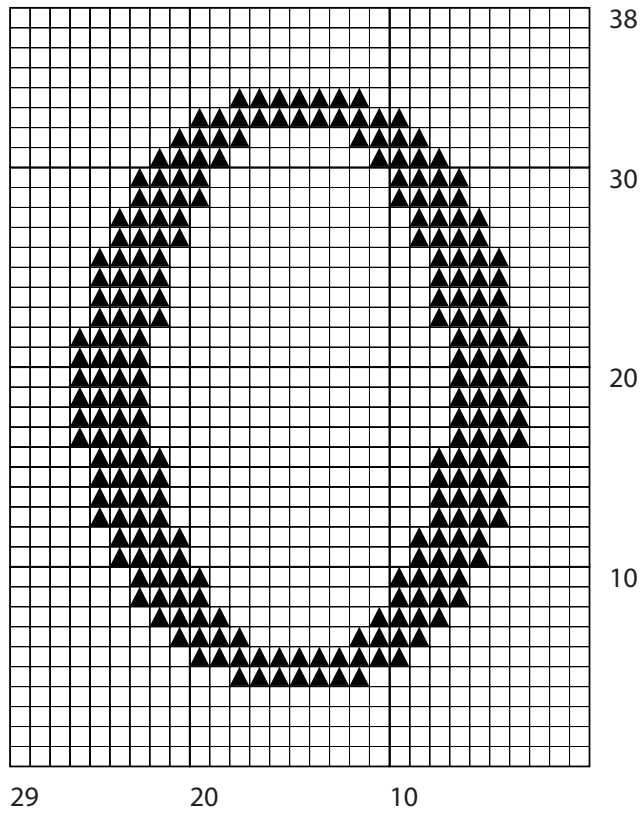


CHART D

△ - F × - G

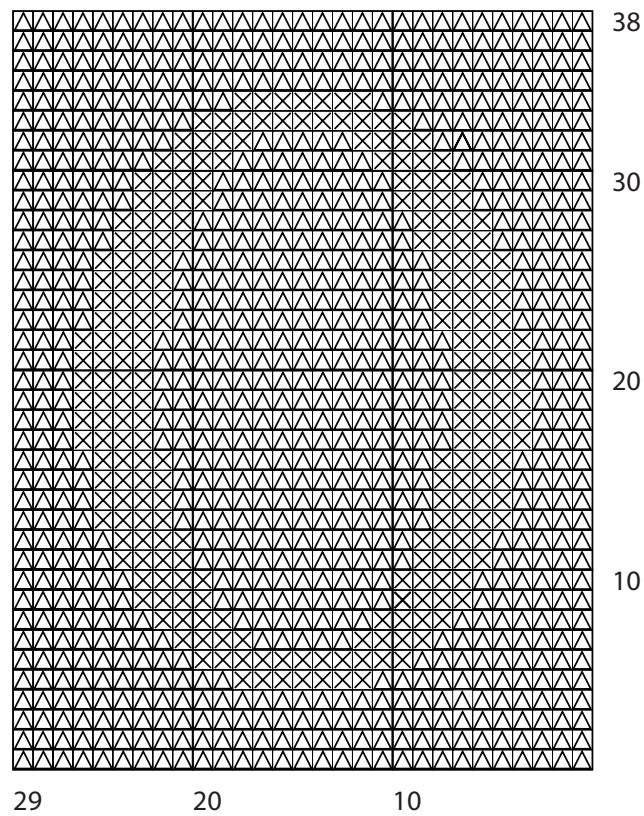


CHART E

× - G

□ - A

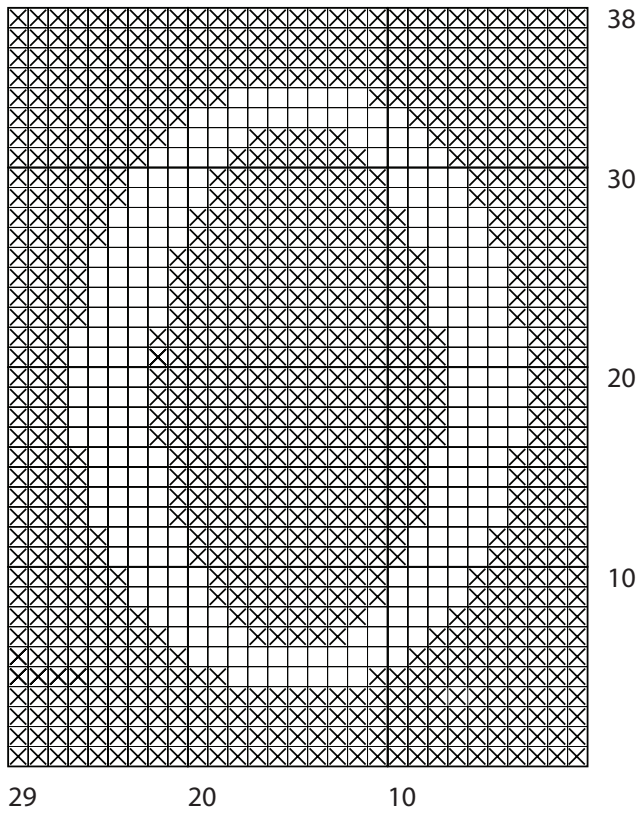


CHART F

● - H

× - G

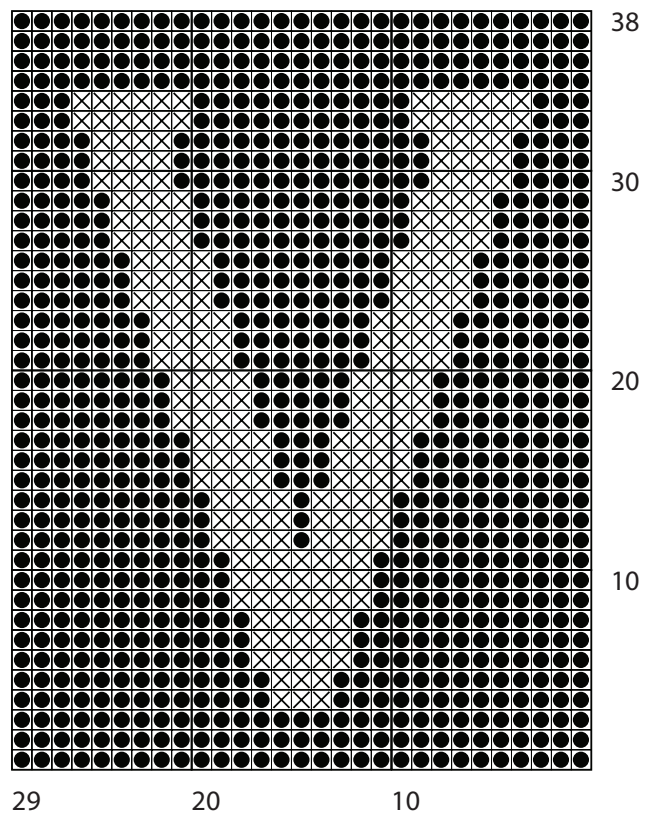


CHART G

▲ - I △ - F

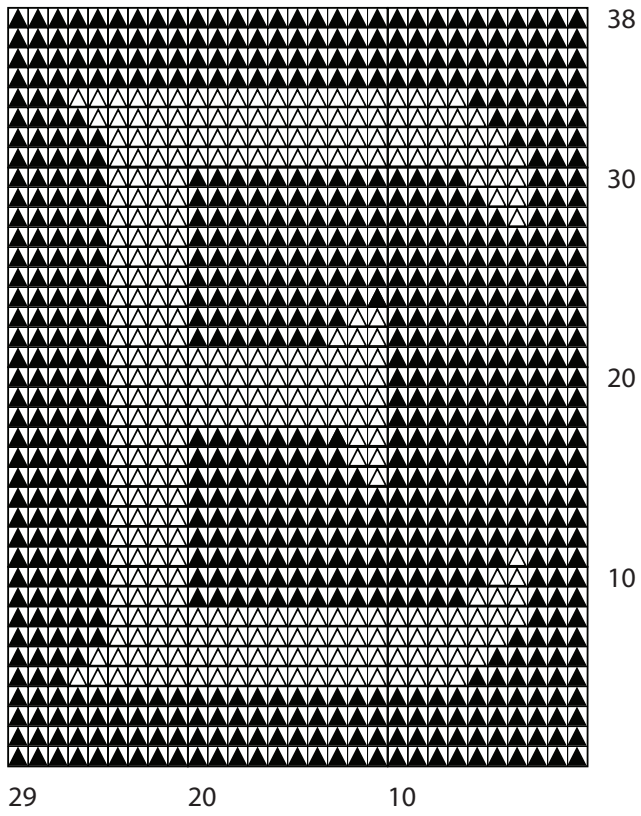


CHART H

○ - E / - C

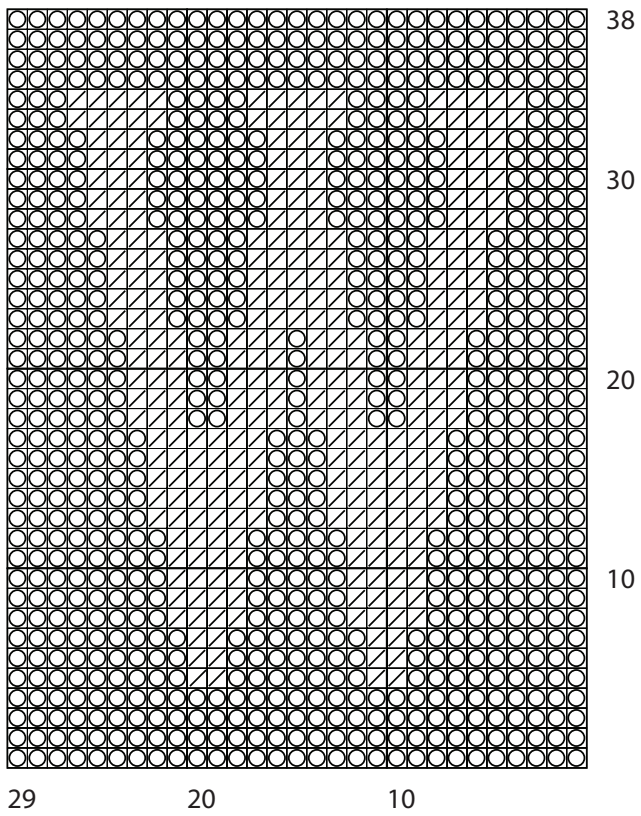


CHART I

• - D ○ - E

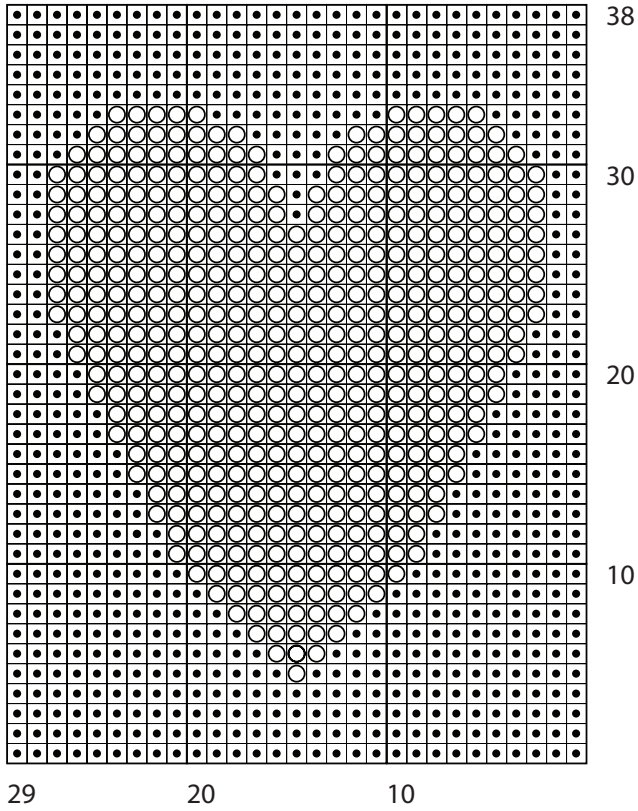
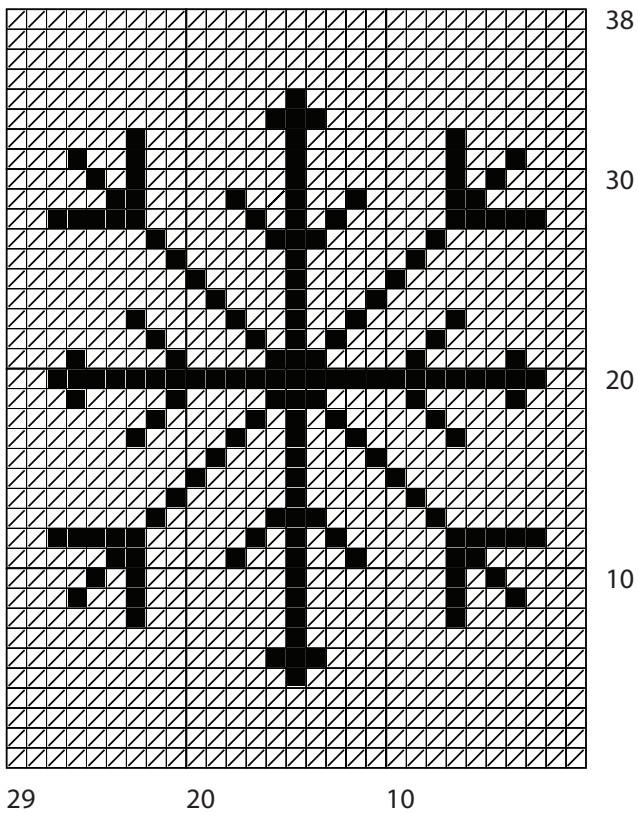


CHART J

/ - C ■ - B



All right reserved. Reproduction in whole or any part of all material, including illustrations, in this publication is strictly forbidden. No part may be reproduced, stored in a retrieval system, or transmitted in any form or by any means electronic, electrostatic, magnetic tape, mechanical, photocopying, recording or otherwise without prior permission of the copyright owners having been given in writing.
 The designs in this publication are copyrighted and must not be knitted for re-sale. Reproduction of this publication is protected by copyright and is sold on the condition that it is used for non commercial purposes. Yarn quantities are approximate as they are based on average requirements. Please note images are for guidance only. Colours may not display accurately on screen or in printed format. Contact your local stockist to view a fringed (not digital reproduction) yarn shade card.

