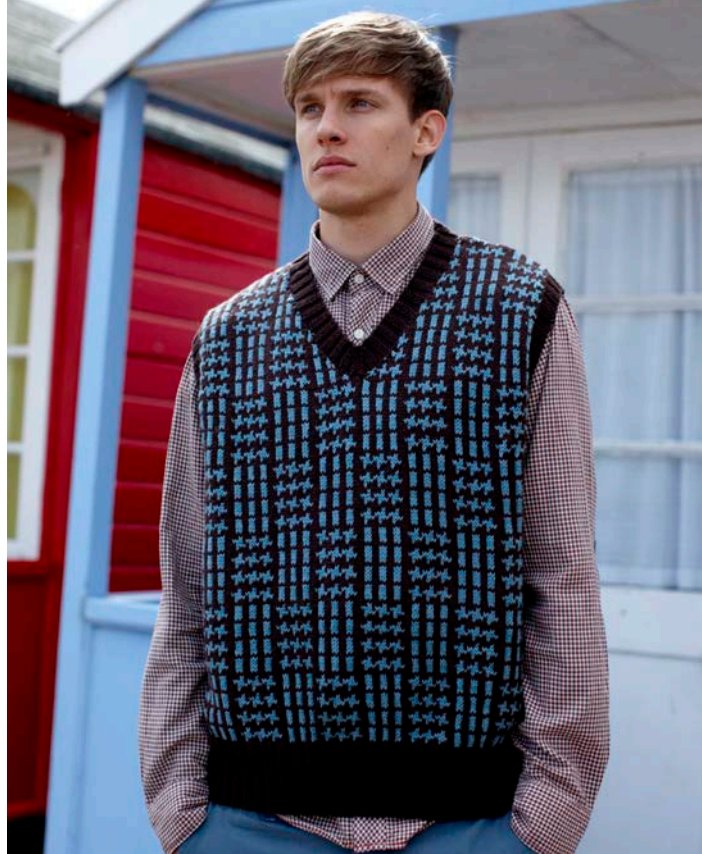




Jack

by Martin Storey



SIZES

	XS	S	M	L	XL	XXL	2XL	
To fit bust/chest	97	102	107	112	117	122	127	cm
	38	40	42	44	46	48	50	in
length	60	63	66	66	68	68	71	cm
	23½	25	26	26	27	27	28	in
width:	50.5	53.5	56.5	59.5	61	64	67.5	cm
	20	21	22	23½	24	25	26½	in

YARN

Wool Cotton

A Coffee Rich 956	6	7	8	8	9	9	10	x 50gm
B Cypress 968	3	3	4	4	4	4	5	x 50gm

NEEDLES

- 1 pair 3¼mm (no 10) (US 3) needles
- 1 pair 4mm (no 8) (US 6) needles

TENSION

26 sts and 27 rows to 10 cm measured over patterned stocking stitch using 4mm (US 6) needles.

BACK

Using 3¼mm (US 3) needles and yarn A, cast on 110 [118: 126: 130: 134: 142: 146] sts.

Row 1 (RS): K2, *P2, K2, rep from * to end.

Row 2: P2, *K2, P2, rep from * to end.

These 2 rows form rib.

Work in rib for a further 23 rows, ending with **WS** facing for next row.

Next row (WS)(inc): P5 [9: 13: 5: 7: 11: 3], *M1, P5, rep from * to last 0 [9: 13: 0: 7: 11: 3] sts, (M1) 0 [1: 1: 0: 1: 1: 1] times, P0 [9: 13: 0: 7: 11: 3].

131 [139: 147: 155: 159: 167: 175] sts.

Change to 4mm (US 6) needles.

Beg and ending rows as indicated and using the **fairisle** technique throughout, cont in patt from chart, which is worked entirely in st st beg with a K row, as folls:

Cont straight until back meas 37 [38: 39: 37: 37: 37: 39] cm, ending with RS facing for next row.

Shape armholes

Keeping patt correct, cast off 9 [8: 7: 7: 7: 7: 6] sts at beg of next 2 rows, and 6 [5: 5: 4: 4: 4: 4] sts at beg of foll 2 rows. 101 [113: 123: 133: 137: 145: 155] sts.

Dec 1 st at each end of next 3 [5: 5: 5: 5: 5: 5] rows, then on 2 [2: 3: 4: 3: 3: 4] foll alt rows, then on every foll 4th row until 89 [97: 105: 113: 117: 125: 133] sts rem.**

Cont straight until armhole meas 22 [24: 26: 28: 30: 30: 31] cm, ending with RS facing for next row.

Shape shoulders and back neck

Cast off 7 [8: 10: 11: 11: 12: 13] sts at beg of next 2 rows.

75 [81: 85: 91: 95: 101: 107] sts.

Next row (RS): Cast off 7 [8: 10: 11: 11: 12: 13] sts, patt until there are 12 [13: 13: 14: 16: 16: 18] sts on right needle and turn, leaving rem sts on a holder.

Work each side of neck separately.

Cast off 4 sts at beg of next row.

Cast off rem 8 [9: 9: 10: 12: 12: 14] sts.

With RS facing, rejoin yarn to rem sts, cast off centre 37 [39: 39: 41: 41: 45: 45] sts, patt to end.

Complete to match first side, reversing shapings.

FRONT

Work as given for back to **.

Work 1 row, ending with RS facing for next row.

89 [97: 105: 113: 117: 125: 133] sts rem.

Shape neck

Next row (RS): Patt 44 [48: 52: 56: 58: 62: 66] sts and turn, leaving rem sts on a holder.

Work each side of neck separately.

Dec 1 st at front neck opening edge on next 8 [8: 6: 6: 6: 4: 4] rows, then on 13 [13: 15: 17: 15: 20: 20] foll alt rows, then on every foll 4th row until 22 [25: 29: 32: 34: 36: 40] sts rem.

Cont straight until front matches back to beg of shoulder shaping, ending with RS facing for next row.

Shape shoulder

Cast off 7 [8: 10: 11: 11: 12: 13] sts at beg of next and foll alt row.

Work 1 row.

Cast off rem 8 [9: 9: 10: 12: 12: 14] sts.

With RS facing, slip centre st onto a holder, rejoin yarn to rem sts, patt to end.

Complete to match first side, reversing shapings.

MAKING UP

Press.

Join right shoulder seam using back stitch or mattress stitch if preferred.

Neckband

With RS facing and using 3¼mm (US 3) needles and yarn A, pick up and knit 42 [46: 50: 54: 58: 58: 62] sts down left front neck, knit st from holder and mark this stitch, pick up and knit 42 [46: 50: 54: 58: 58: 62] sts up right front neck, then 44 [48: 48: 48: 48: 52: 52] sts from back.

129 [141: 149: 157: 165: 169: 177] sts.

Next row (WS): P2, (K2, P2) 21 [23: 24: 25: 26: 27: 28] times, P1 (this is the marked stitch), (P2, K2) 10 [11: 12: 13: 14: 14: 15] times, P2.

This row sets the rib.

Next row (RS)(dec): Rib 40 [44: 48: 52: 56: 56: 60] sts, K2tog tbl, K marked st, K2tog, rib to end.

127 [139: 147: 155: 163: 167: 175] sts.

Cont as set, dec 1 st each side of centre marked st on every foll alt row until 121 [133: 141: 149: 157: 161: 169] sts rem.

Work 1 row, ending with RS facing for next row.

Cast off in rib, dec 2 sts at centre front as before.

Join left shoulder and neckband seam.

Armhole borders (both alike)

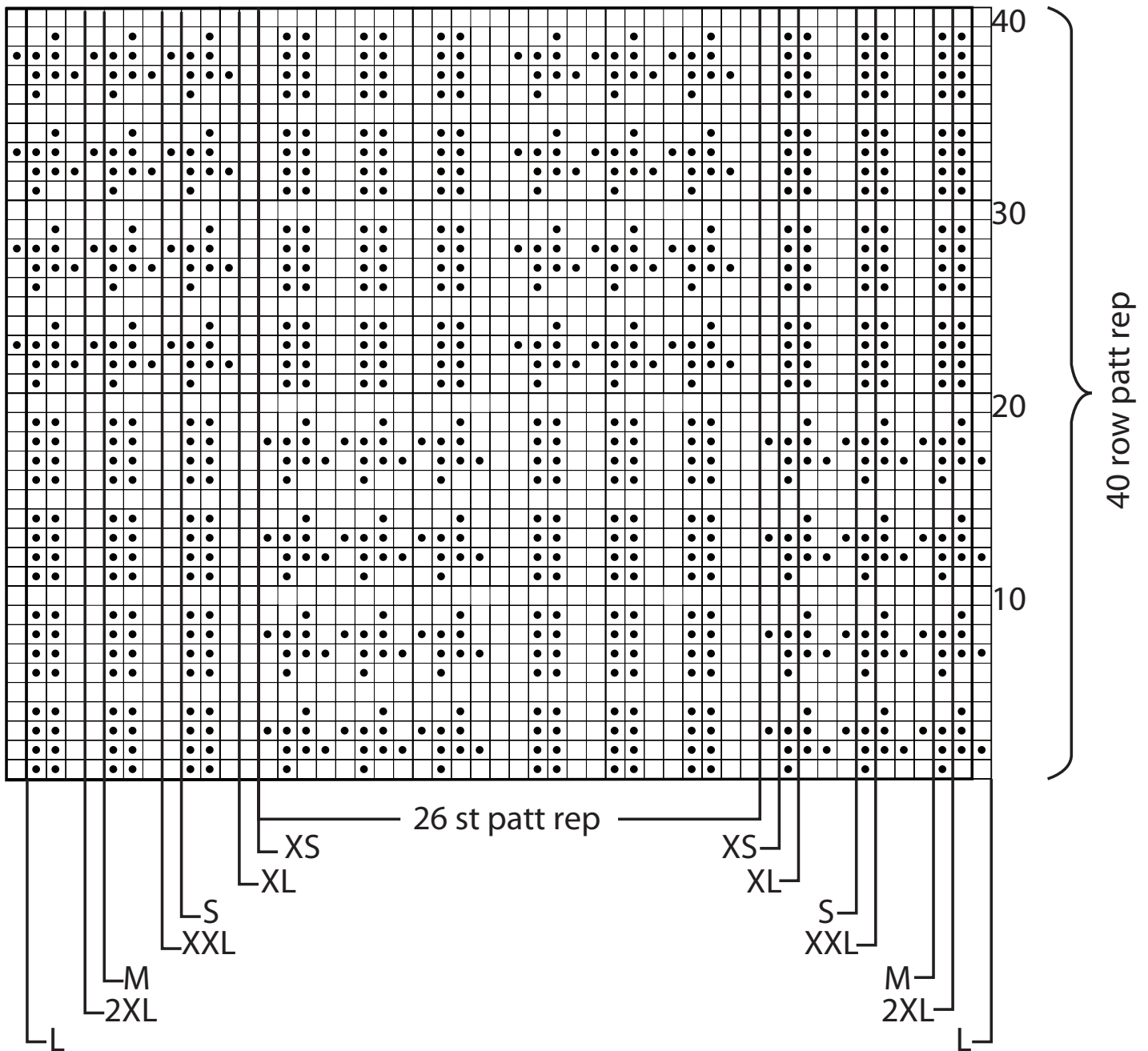
With RS facing and using 3¼mm (US 3) needles and yarn A, pick up and knit 86 [94: 102: 110: 118: 118: 126] sts evenly around entire armhole edge.

Next row (WS): P2, *K2, P2, rep from * to end.

This row sets the rib.

Cont in rib as set until armhole border meas 2.5cm, ending with RS facing for next row.

Cast off evenly in rib.



key

- A
- B