



**OUT NOW ON DVD,
BLU-RAY & DOWNLOAD**



Shaun the Sheep
Picnic Blanket

R O W A N



R O W A N



Shaun the Sheep Picnic Blanket

YARN

Rowan Pure Wool DK*

A 023 Shamrock	2	x 50 gram balls
B 057 Dew	2	x 50 gram balls
C 030 Damson	3	x 50 gram balls
D 049 Ox Blood	2	x 50 gram balls
E 012 Snow	4	x 50 gram balls
F 004 Black	2	x 50 gram balls
G 036 Kiss	2	x 50 gram balls
H 013 Enamel	4	x 50 gram balls
I 051 Gold	2	x 50 gram balls
J 019 Avocado	6	x 50 gram balls
K 110 Dust	1	x 50 gram balls
L 010 Indigo	1	x 50 gram balls
M 003 Anthracite	1	x 50 gram balls

* The blanket can also be knitted in Rowan Pure Wool Superwash DK when it is launched in July 2015.

Please note : Yarn K is a new shade for launch in July 2015, we recommend substituting with Wool Cotton shade 956 Coffee Rich.

NEEDLES

1 pair of Milward 4mm (UK8/USA6) needles.

1 pair of Milward 4mm (UK8/USA6) double-pointed needles (for the writing).

EXTRAS

Milward cable pin and bodkin for sewing up.

Milward stitch holders.

Coats washable toy stuffing.

TENSION

22 sts x 30 rows to 10cm (stocking st), on 4mm needles or size needed to obtain correct tension.

FINISHED SIZE

Including borders, approx 132 x 132 cm (52 x 52 in).

Caution

It is important to check your tension before starting your blanket and we cannot accept liability for the finished product if any yarn other than the specified yarn is used. If there are too many stitches to 10cm, your tension is tight and you should change to a larger size needle. If there are too few, your tension is loose and you should change to a smaller size needle.

Knitted fabric is stretchy and very forgiving, so if you are new to knitting and your tension is a bit uneven, please do not worry too much. You can always work fewer rows - or extra rows - for some squares, then on completion, block them out to the correct size. Once stitched together, neighbouring squares will also help to stabilise any uneven knitting.

ABBREVIATIONS

K=knit; **P**=purl; **st(s)**=stitch(es); **garter st**=garter st - K every row; **stocking st**=stocking stitch (K on RS, P on WS); **rev stocking st**=reverse stocking stitch; **patt**=pattern; **inc**=increase - knit or purl into front and back of next st; **dec**=decrease; **tog**=together; **cont**=continue; **yfwd**=yarn forward - bring yarn to front of work between needles; **sL1K**=slip 1 st knitways; **pssso**=pass slipped st over; **fol**=following; **alt**=alternate; **rep**=repeat; **rem**=remaining; **M1**=make a st by picking up horizontal loop lying before next st and knitting into back of it; **M1P**=make a st by picking up horizontal loop lying before next st and purling into back of it; **approx**=approximate; **RS**=right side; **WS**=wrong side; **meas**=measures; **cm**=centimetres; **in**=inches; **mm**=millimetres; **C6F**=slip next 3 sts on a cable pin and leave at front of work, K3, then K3 from cable pin; **MB**=make bobble - (K1, P1, K1, P1, K1) into next st, turn, K5, turn, P5, turn, K5, turn, K2tog, K1, K2tog, then pass 2nd and 3rd st over 1st st to complete bobble.

Note for motif knitting

When working in patt from charts, do not strand yarn across back of work, but use separate balls as required, twisting yarns when changing colour to avoid a hole. Read odd rows K from right to left and even rows P from left to right.

INSTRUCTIONS

Each completed square meas. approx. 25cm x 25cm (10in x 10in).

SQUARE 1A - Two-tone Cables

The completed square is made up of four smaller, quarter-squares. After the first square is knitted, each subsequent quarter-square is knitted up along the side edge of the previous square.

Quarter-square 1

With 4mm needles and Yarn A, cast on 38 sts.

****Row 1** – (RS), P2, *K7, P2; rep from * to end.

Row 2 – K2, *P2, M1P (make a st by picking up horizontal loop lying before next st and purling into back of it), P3, M1P, P2, K2; rep from * to end. (46 sts)

Row 3 – P2, *C6F, K3, P2; rep from * to end.

Row 4 and every alt row – K all K sts and P all P sts as they appear.

Row 5 – P2, *K3, C6F, P2; rep from * to end.

Rows 7, 9 and 11 – P2, *K9, P2; rep from * to end.

Row 12 – As row 4.

Rep rows 3 to 12 twice more, then rows 3 to 6 once more.

Decrease row – P2, *K1, K2tog, K3, K2tog, K1, P2; rep from * to end. (38 sts).

Next row – K2, *P7, K2; rep from * to end. Cast off.

Quarter-square 2

With RS facing, 4mm needles and Yarn B, pick up and knit 38 sts evenly down left side edge of Quarter-square 1.

Next row – (WS), K2, *P7, K2; rep from * to end.

Work as Quarter square 1 from ** to end.

Quarter-square 3

With RS facing, 4mm needles and Yarn A, pick up and knit 38 sts evenly down left side edge of Quarter-square 2.

Next row – (WS), K2, *P7, K2; rep from * to end.

Work as Quarter square 1 from ** to end.

Quarter-square 4

With RS facing, 4mm needles and Yarn B, pick up and knit 38 sts evenly down left side edge of Quarter-square 3.

Next row – (WS), K2, *P7, K2; rep from * to end.

Work as Quarter square 1 from ** to end.

Join seam between Quarter-square 1 and Quarter-square 4 to complete.

SQUARE 1B - Two-tone Cables

Work as Square 1A - Two-tone Cables, using Yarn C in place of Yarn A and Yarn J in place of Yarn B.

SQUARE 2 – Cockerel Motif

Lower Neck Feathers

With 4mm needles and Yarn A, cast on 25 sts loosely.

****Next row** – K.

Next row – (RS), K1, (yfwd, K2, sL1K, K2tog, pssso, K2, yfwd, K1) 3 times.

Next row – P.

Rep last 2 rows twice more.

Next row – K3, (sL1K, K2tog, pssso, K5) twice, sL1K, K2tog, pssso,

K3. (19 sts).

Next row – P.**

Next row – K2, sL1K, K1, pssso, K4, sL1K, K2tog, pssso, K4, sL1K, K2tog, pssso, K1. (14 sts).

Next row – P.

Break yarn. Leave these 14 sts on a stitch holder.

Upper Neck Feathers

With 4mm needles and Yarn D, cast on 25 sts loosely and work as Lower Neck Feathers from ** to **. (19 sts).

Next row – K2, (sL1K, K2tog, pssso, K3) twice, sL1K, K2tog, pssso, K2. (13 sts).

Next row – P, dec 1 st at centre. (12 sts).

Break yarn. Leave these 12 sts on a stitch holder.

Main Square

With 4mm needles and Yarn E, cast on 55 sts and starting with a K row, work in stocking st for 16 rows, thus ending with RS facing for next row.

Joining in and breaking off colours as required, patt from Cockerel chart until row 4 has been worked, thus ending with RS facing for next row.

Join in Neck Feathers

Row 5 – In Yarn E, K23, (in Yarn A K tog 1 st from Lower Neck Feathers with next st on left hand needle) 14 times, in Yarn E K to end. (55 sts).

Starting with row 6, cont in stocking st and patt from Cockerel Chart until row 10 has been worked, thus ending with RS facing for next row.

Row 11 – In Yarn E, K24, (in Yarn D K tog 1 st from Upper Neck Feathers with next st on left hand needle) 12 times, in Yarn E K to end. (55 sts).

Starting with row 12, cont in stocking st and patt from chart as before until row 44 has been worked, thus ending with RS facing for next row. Cont in Yarn E **only** and cont in stocking st for a further 16 rows, thus ending with RS facing for next row. Cast off. Sew down side edges of Neck Feathers.

Eye

Using Yarn F doubled, work 3 Straight Stitches horizontally, then 3 straight Stitches vertically over the top, using photograph as a guide.

Comb

With 4mm needles and Yarn G, cast on 8 sts

Next row – K.

Next 2 rows – Inc in first st, K4, turn, K to end.

Next 2 rows – Inc in first st, K7, turn, K to end.

Next 2 rows – K5, turn, K to end.

Next 2 rows – K2tog, K6, turn, K to end.

Next 2 rows – K2tog, K to end and back.

Next 2 rows – Cast off 4 sts, K to end and back.

Next 2 rows – K.

Next 2 rows – Cast on 4 sts, K these 4 sts, K to end and back.

Next 2 rows – Inc in first st, K5, turn, K to end.

Next 2 rows – Inc in first st, K3, turn, K to end.

Next 2 rows – K7, turn, K to end.

Next 2 rows – K5, turn, K to end.

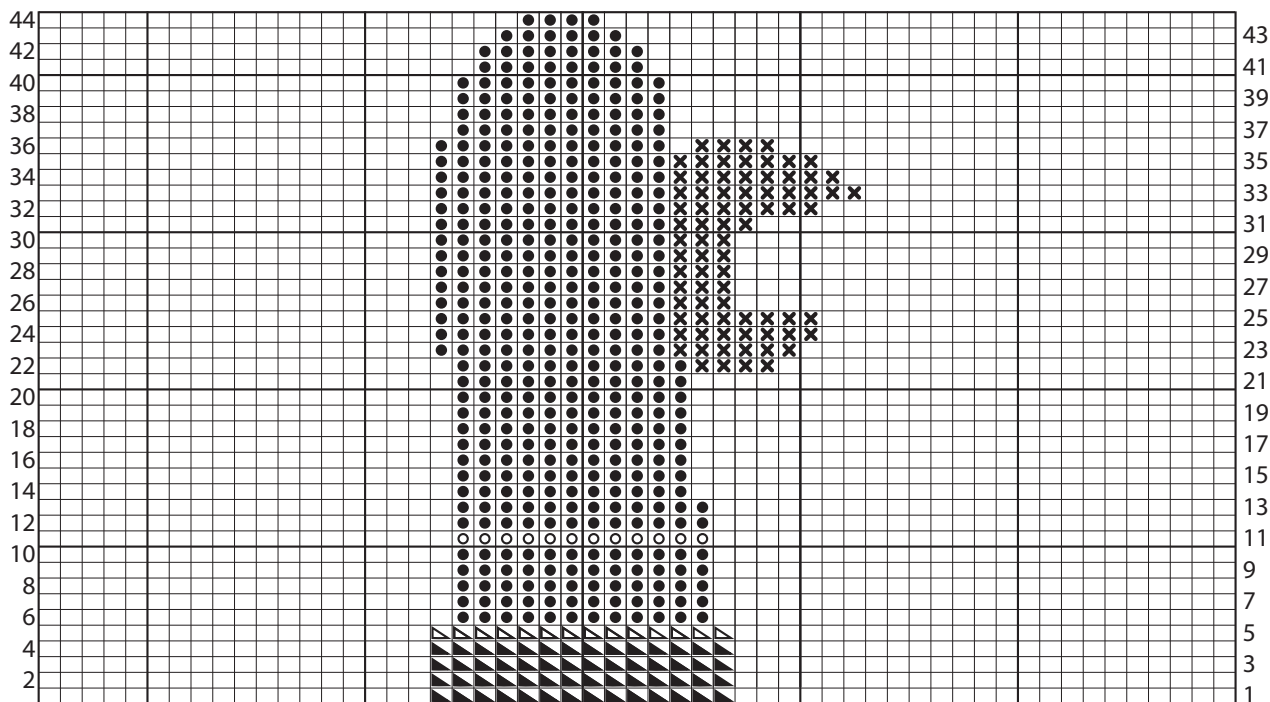
Next 2 rows – K2tog, K6, turn, K to end.

Next 2 rows – K2tog, K to end and back.

Next 2 rows – Cast off 4 sts, K to end and back.

Next 2 rows – K.

Cockerel



Key to Cockerel

- = In **Yarn E** - K on RS, P on WS
- ▤ = In **Yarn A** - K on RS, P on WS
- ▥ = In **Yarn A** - K tog st from Lower Neck Feathers with st on needle
- = In **Yarn D** - K on RS, P on WS
- ⊠ = In **Yarn D** - K tog st from Upper Neck Feathers with st on needle
- ⊞ = In **Yarn I** - K on RS, P on WS

Next 2 rows – Cast on 4 sts, K these 4 sts, K to end and back.

Next 2 rows - Inc in first st, K5, turn, K to end.

Next 2 rows - Inc in first st, K3, turn, K to end.

Next 2 rows – K9, turn, K to end.

Next 2 rows – K2tog, K5, turn, K to end.

Next 2 rows – K2tog, K to end and back.

Cast off.

Wattle

With 4mm needles and Yarn G, cast on 5 sts.

Next row – K.

Next 2 rows – Inc in first st, K1, turn, K to end.

Next 2 rows – Inc in first st, K to end and back.

Next 2 rows – K3, turn, K to end.

Next 2 rows – K2tog, K3, turn, K to end.

Next row – K2tog, K to end.

Next row – K to last 2 sts, K2tog.

Cast off.

Sew short side of Comb securely around top of Head.

Sew short side of Wattle securely beneath Beak.

SQUARE 3A – Diagonal Stripes

With 4mm needles and Yarn H, cast on 3 sts. Work in garter stripe, shaping lower side edges thus:

Row 1 – (RS), K.

Row 2 and every alt row – K.

Row 3 – K1, yfwd, K1, yfwd, K1. (5 sts).

Row 5 – K1, yfwd, K3, yfwd, K1. (7 sts).

Row 7 – K1, yfwd, K5, yfwd, K1. (9 sts).

Row 8 – K.

Break Yarn H, join in Yarn I.

Row 9 – K1, yfwd, K to last 2 sts, yfwd, K1. (11 sts).

Row 10 – K.

Row 11 – K1, yfwd, K to last 2 sts, K1. (13 sts).

Row 12 – K.

Break Yarn I, join in Yarn J.

Rows 13 to 20 – As rows 9 to 12 twice. (21 sts).

Break Yarn J, join in Yarn I.

Rows 21 to 24 – As rows 9 to 12 once. (25 sts).

Break Yarn I, join in Yarn D.

Rows 25 to 32 – As rows 9 to 12 twice. (33 sts).

Break Yarn D, join in Yarn I.

Rows 33 to 36 – As rows 9 to 12 once. (37 sts).

Break Yarn I, join in Yarn H.

Rows 37 to 44 – As rows 9 to 12 twice. (45 sts).

Break Yarn H, join in Yarn I.

Rows 45 to 48 – As rows 9 to 12 once. (49 sts).

Break Yarn I, join in Yarn J.

Rows 49 to 56 – As rows 9 to 12 twice. (57 sts).

Break Yarn J, join in Yarn I.

Rows 57 to 60 – As rows 9 to 12 once. (61 sts).

Break Yarn I, join in Yarn D.

Rows 61 to 68 – As rows 9 to 12 twice. (69 sts).

Break Yarn D, join in Yarn I.

Rows 69 to 72 – As rows 9 to 12 once. (73 sts).

Break Yarn I, join in Yarn H.

Rows 73 to 76 – As rows 9 to 12 once. (77 sts).

Rows 77 and 78 – K.

Shape upper side edges thus:

Row 79 – K1, sL1K, K1, pssso, K to last 3 sts, K2tog, K1. (75 sts).

Row 80 – K.

Break Yarn H, join in Yarn I.

Row 81 – K1, sL1K, K1, pssso, K to last 3 sts, K2tog, K1. (73 sts).

Row 82 – K.

Row 83 – K1, sL1K, K1, pssso, K to last 3 sts, K2tog, K1. (71 sts).

Row 84 – K.

Break Yarn I, join in Yarn J.

Rows 85 to 92 – As rows 81 to 84 twice. (63 sts).

Break Yarn J, join in Yarn I.

Rows 93 to 96 – As rows 81 to 84 once. (59 sts).

Break Yarn I, join in Yarn D.

Rows 97 to 104 – As rows 81 to 84 twice. (51 sts).

Break Yarn D, join in Yarn I.

Rows 105 to 108 – As rows 81 to 84 once. (47 sts).

Break Yarn I, join in Yarn H.

Rows 109 to 116 – As rows 81 to 84 twice. (39 sts).

Break Yarn H, join in Yarn I.

Rows 117 to 120 – As rows 81 to 84 once. (35 sts).

Break Yarn I, join in Yarn J.

Rows 121 to 128 – As rows 81 to 84 twice. (27 sts).

Break Yarn J, join in Yarn I.

Rows 129 to 132 – As rows 81 to 84 once. (23 sts).

Break Yarn I, join in Yarn D.

Rows 133 to 140 – As rows 81 to 84 twice. (15 sts).

Break Yarn D, join in Yarn I.

Rows 141 to 144 – As rows 81 to 84 once. (11 sts).

Break Yarn I, join in Yarn H.

Rows 145 to 148 – As rows 81 to 84 once. (7 sts).

Row 149 – K1, sL1K, K1, pssso, K1, K2tog, K1. (5 sts).

Row 150 – K.

Row 151 – K1, sL1K, K2tog, pssso, K1. (3 sts).

Row 152 – K. Cast off.

SQUARE 3B – Diagonal Stripes

With 4mm needles and Yarn B, cast on 3 sts. Work in garter stripe, shaping lower side edges thus:

Row 1 – (RS), K.

Row 2 and every alt row – K.

Row 3 – K1, yfwd, K1, yfwd, K1. (5 sts).

Row 5 – K1, yfwd, K3, yfwd, K1. (7 sts).

Row 7 – K1, yfwd, K5, yfwd, K1. (9 sts).

Row 8 – K.

Break Yarn B, join in Yarn C.

Row 9 – K1, yfwd, K to last 2 sts, yfwd, K1. (11 sts).

Row 10 – K.

Row 11 – K1, yfwd, K to last 2 sts, K1. (13 sts).

Row 12 – K.

Break Yarn C, join in Yarn B.

Rows 13 to 20 – As rows 9 to 12 twice. (21 sts).

Break Yarn B, join in Yarn C.

Rows 21 to 24 – As rows 9 to 12 once. (25 sts).

Break Yarn C, join in Yarn B.

Rows 25 to 32 – As rows 9 to 12 twice. (33 sts).

Break Yarn B, join in Yarn C.

Rows 33 to 36 – As rows 9 to 12 once. (37 sts).

Break Yarn C, join in Yarn B.

Rows 37 to 44 – As rows 9 to 12 twice. (45 sts).

Break Yarn B, join in Yarn C.

Rows 45 to 48 – As rows 9 to 12 once. (49 sts).

Break Yarn C, join in Yarn B.

Rows 49 to 56 – As rows 9 to 12 twice. (57 sts).

Break Yarn B, join in Yarn C.

Rows 57 to 60 – As rows 9 to 12 once. (61 sts).

Break Yarn C, join in Yarn B.

Rows 61 to 68 – As rows 9 to 12 twice. (69 sts).

Break Yarn B, join in Yarn C.

Rows 69 to 72 – As rows 9 to 12 once. (73 sts).

Break Yarn C, join in Yarn B.

Rows 73 to 76 – As rows 9 to 12 once. (77 sts).

Rows 77 and 78 – K.

Shape upper side edges thus:

Row 79 – K1, sL1K, K1, pssso, K to last 3 sts, K2tog, K1. (75 sts).

Row 80 – K.

Break Yarn B, join in Yarn C.

Row 81 – K1, sL1K, K1, pssso, K to last 3 sts, K2tog, K1. (73 sts).

Row 82 – K.

Row 83 – K1, sL1K, K1, pssso, K to last 3 sts, K2tog, K1. (71 sts).

Row 84 – K.

Break Yarn C, join in Yarn B.

Rows 85 to 92 – As rows 81 to 84 twice. (63 sts).

Break Yarn B, join in Yarn C.

Rows 93 to 96 – As rows 81 to 84 once. (59 sts).

Break Yarn C, join in Yarn B.

Rows 97 to 104 – As rows 81 to 84 twice. (51 sts).

Break Yarn B, join in Yarn C.

Rows 105 to 108 – As rows 81 to 84 once. (47 sts).

Break Yarn C, join in Yarn B.

Rows 109 to 116 – As rows 81 to 84 twice. (39 sts).

Break Yarn B, join in Yarn C.

Rows 117 to 120 – As rows 81 to 84 once. (35 sts).

Break Yarn C, join in Yarn B.

Rows 121 to 128 – As rows 81 to 84 twice. (27 sts).

Break Yarn B, join in Yarn C.

Rows 129 to 132 – As rows 81 to 84 once. (23 sts).

Break Yarn C, join in Yarn B.

Rows 133 to 140 – As rows 81 to 84 twice. (15 sts).

Break Yarn B, join in Yarn C.

Rows 141 to 144 – As rows 81 to 84 once. (11 sts).

Break Yarn C, join in Yarn B.

Rows 145 to 148 – As rows 81 to 84 once. (7 sts).

Row 149 – K1, sL1K, K1, pssso, K1, K2tog, K1. (5 sts).

Row 150 – K.

Row 151 – K1, sL1K, K2tog, pssso, K1. (3 sts).

Row 152 – K. Cast off.

SQUARE 4 – Bitzer Motif

With 4mm needles and Yarn E, cast on 55 sts and starting with a K row, work in stocking st for 10 rows, thus ending with RS facing for next row.

Joining in and breaking off colours as required, patt from Bitzer Chart until row 56 has been worked, thus ending with RS facing for next row. Cont in Yarn E and work in stocking st for a further 8 rows, thus ending with RS facing for next row. Cast off.

Embroidery

Use Square 4 Embroidery Diagram and photograph as a guide.

Using Yarn K, work a row of Chain Stitch for the Mouth.

Using Yarn E, work a row of Chain Stitch around each Eye.

Using Yarn F doubled, work a French Knot in the top left of each Eye for the Pupil.

Front Teeth (work 2)

With 4mm needles and Yarn E, cast on 4 sts and work in garter st for 5 rows. Cast off.

Side Teeth (work 2)

With 4mm needles and Yarn E, cast on 3 sts and work in garter st for 5 rows. Cast off.

Sew all Teeth in place securely, overlapping the Mouth.

Nose

With 4mm needles and Yarn K, cast on 7 sts and starting with a P row, work in stocking st thus:

Row 1 – (WS), P.

Row 2 – K1, (inc in next st, K1) 3 times. (10 sts).

Row 3 – (P1, inc in next st) twice, P2, (inc in next st, P1) twice. (14 sts).

Row 4 – K1, inc in next st, K to last 2 sts, inc in next st, K1. (16 sts).

Row 5 – P.

Row 6 – K1, inc in next st, K to last 2 sts, inc in next st, K1. (18 sts).

Row 7 – P.

Row 8 – K1, inc in next st, K to last 2 sts, inc in next st, K1. (20 sts).

Row 9 – P.

Row 10 – K.

Row 11 – P.

Row 12 – K1, K2tog, K to last 3 sts, K2tog, K1. (18 sts).

Row 13 – P.

Row 14 – K1, K2tog, K to last 3 sts, K2tog, K1. (16 sts).

Row 15 – P.

Row 16 – K1, K2tog, K1, K2tog, K4, K2tog, K1, K2tog, K1. (12 sts).

Row 17 – P.

Row 18 – K1, K2tog, K2, K2tog, K2, K2tog, K1. (9 sts).

Row 19 – P1, P2tog, P3, P2tog, P1. (7 sts).

Cast off.

Sew Nose in place centrally above Mouth, stuffing slightly.

Hat

Using 4mm needles and Yarn L, cast on 33 sts and work in garter st for 2 rows.

Next 2 rows – K8, turn, K to end.

Next 2 rows – K12, turn, K to end.

Increase row – (K4, M1) 7 times, K5. (40 sts).

Next 2 rows – K8, turn, K to end.

Next 2 rows – K12, turn, K to end.

Cast off loosely. Pin, then sew in place all round top of Head, with cast-on edge on the inner side.

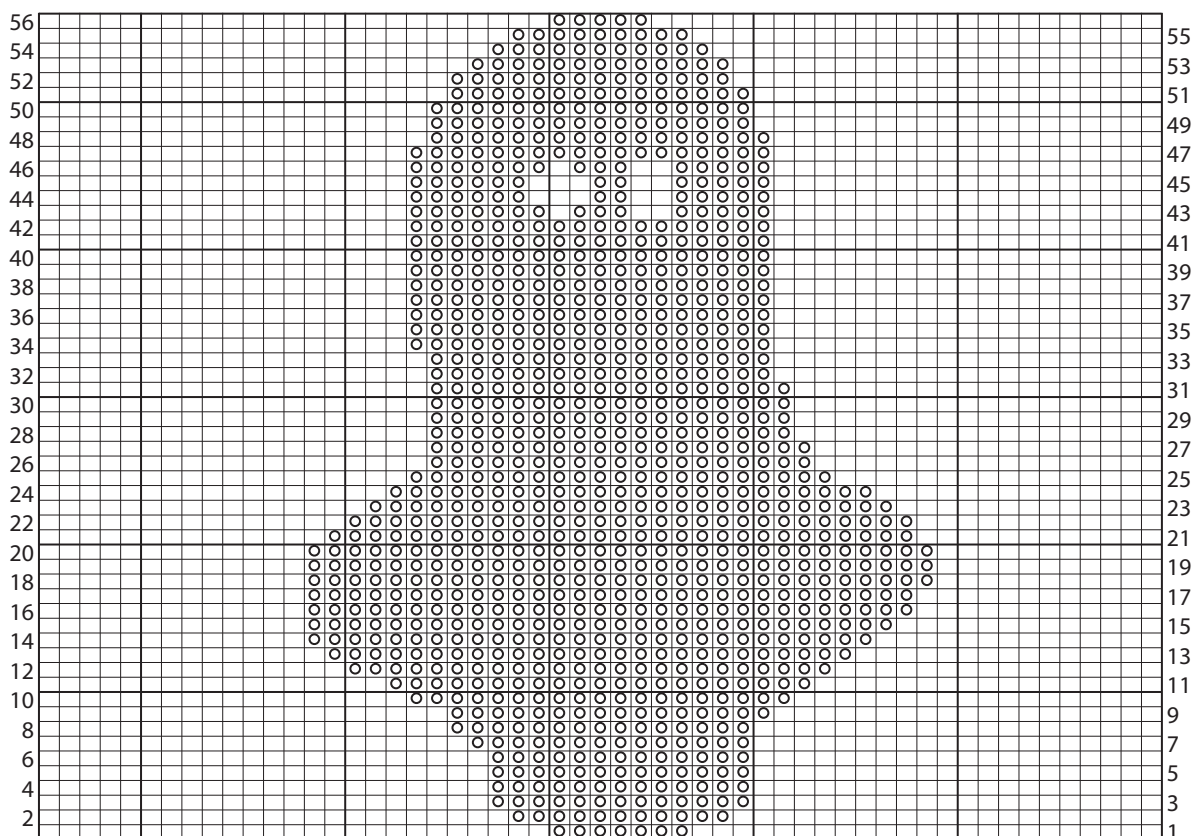
Collar

With 4mm needles and Yarn K, cast on 15 sts and work in garter st for 7 rows. Cast off. Sew in place around neck.

Ears (2)

With 4mm needles and Yarn K, cast on 8 sts and starting with a K row, work in stocking st for 2 rows, thus ending with RS facing for next row.

Bitzer Chart

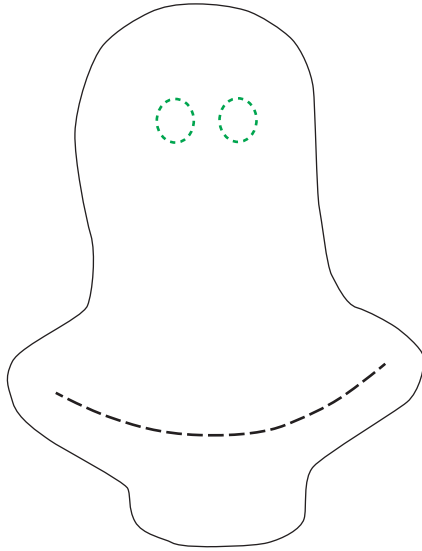


Key to Bitzer Chart

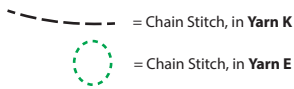
□ = In **Yarn E** - K on RS, P on WS

⊙ = In **Yarn I** - K on RS, P on WS

Bitzer Embroidery Square 4 Diagram



Key to Embroidery Diagram



Cast on 4 sts at beg of next 2 rows. (16 sts).

Increase row – Inc in 1st st, K to last 2 sts, inc in next st, K1. (18 sts).

Starting with a P row, work in stocking st for 3 rows, thus ending with RS facing for next row.

Inc 1 st at each end as before on next and every foll 4th row until there are 24 sts. Work 1 row, thus ending with RS facing for next row.

Next row – K1, M1, K9, (K2tog) twice, K9, M1, K1. (24 sts).

Starting with a P row, work in stocking st for 3 rows, thus ending with RS facing for next row.

Next row – K10, (K2tog) twice, K10. (22 sts).

Next row – P.

Decrease row – K1, K2tog, K6, (K2tog) twice, K6, K2tog, K1. (18 sts).

Next row – P.

Decrease row – K1, K2tog, K4, (K2tog) twice, K4, K2tog, K1. (14 sts).

Next row – P.

Decrease row – K1, K2tog, K2, (K2tog) twice, K2, K2tog, K1. (10 sts).

Cast off.

Join side seam.

Sew Ears to sides of Head, covering side edges of Hat.

SQUARE 5 – Cable Panel

With 4mm needles and Yarn B, cast on 57 sts.

Row 1 – (RS), P9, *K7, P9; rep from * to end.

Row 2 – K9, *P2, M1P (make a st by picking up horizontal loop lying before next st and purling into back of it), P3, M1P, P2, K9; rep from * to end. (63 sts).

Row 3 – P9, *C6F, K3, P9; rep from * to end.

Row 4 – K9, *P9, K9; rep from * to end.

Row 5 – P9, *K3, C6F, P9; rep from * to end.

Row 6 – K9, *P9, K9; rep from * to end.

Row 7 – P9, *K9, P9; rep from * to end.

Row 8 – K9, *P9, K9; rep from * to end.

Rows 9 and 10 – As rows 7 and 8.

Rows 3 to 10 form patt.

Cont in patt until work meas approx. 24cm, ending after row 6 and with RS facing for next row.

Next row – P9, *K1, K2tog, K3, K2tog, K1, P9; rep from * to end. (57 sts).

Next row – K9, *P7, K9; rep from * to end.

Cast off in patt.

SQUARE 6 – Slip Motif

With 4mm needles and Yarn E, cast on 55 sts and starting with a K row, work in stocking st for 14 rows, thus ending with RS facing for next row.

Joining in and breaking off colours as required, patt from Slip Chart until row 37 has been worked, ending with **WS** facing for next row.

Cont in Yarn E only and starting with a P row, work in stocking st for a further 23 rows, thus ending with RS facing for next row. Cast off.

Embroidery

Use Square 6 Embroidery Diagram and photograph as a guide.

Using Yarn K, embroider lines just above contrast mouth on the left hand side and along the lower edge of the cheek on the right hand side, then work the horizontal lines for ridges across the top of the snout.

Ears (work 2)

With 4mm needles and Yarn I, cast on 4 sts and work in garter st for 4 rows.

Shape Ear

Next row – K to last st, yfwd, K1. (5 sts).

Next row – K1, yfwd, K to end. (6 sts).

Rep last 2 rows until there are 12 sts.

Next row – K.

Next 2 rows – K8, turn, sL1K, K to end.

Next row – K.

Next row – K to last 3 sts, K2tog, K1. (11 sts).

Next row – K1, K2tog, K to end. (10 sts).

Rep last 2 rows until 4 sts rem.

Next 2 rows – K. Cast off.

Join short cast-on and cast-off edges. Work a gathering st around lower straight edge, draw up and fasten off.

Eyes (2)

Using 4mm needles and Yarn E, cast on 3 sts.

Next row – K, inc in every st. (6 sts).

Next row – P.

Next row – Inc in first st, K to end. (7 sts).

Next row – P.

Next row – K2tog, K3, K2tog. (5 sts).

Next row – P2tog, P1, P2tog. (3 sts).

Cast off.

Break yarn, thread through rem loops and draw up tightly.

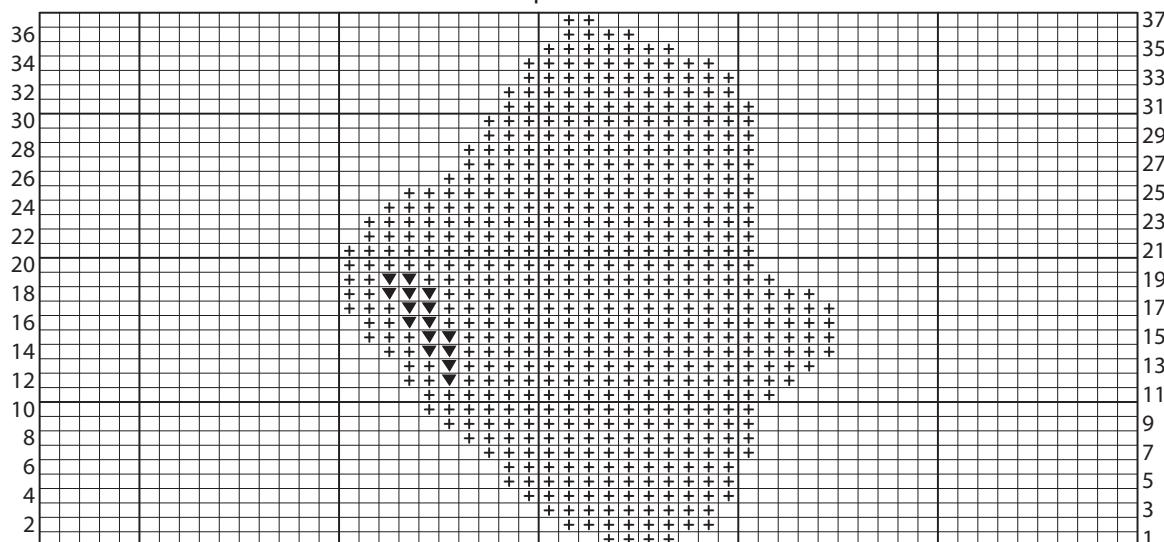
Pupils: Using Yarn F, work a circle of 6 small Chain Stitches towards lower edge of each Eye. Stuff Eyes slightly, then sew Eyes in position, using Square 6 Embroidery Diagram and photograph as a guide.

Embroidery

Use Square 6 Embroidery Diagram and photograph as a guide.

Using Yarn H at the right hand side and Yarn I at the left hand side, embroider lines on right and left cheeks.

Slip Chart



Key to Slip Chart

- = In **Yarn E**, K on RS, P on WS
- ⊕ = In **Yarn I**, K on RS, P on WS
- ▼ = In **Yarn K**, K on RS, P on WS

Using Yarn I, embroider tufts of hair using random Straight Stitches worked at various angles round top of Head.

Using Yarn F doubled, embroider eyelashes using Back Stitch and Straight Stitch.

Large Tooth

With 4mm needles and Yarn E, cast on 3 sts and work in garter st for 4 rows.

Cast off.

Small Tooth

With 4mm needles and Yarn E, cast on 2 sts and work in garter st for 3 rows.

Next row – K2tog and fasten off.

Sew Teeth in place securely just below embroidered line of mouth, using photograph as a guide.

Nose

With 4mm needles and Yarn K, cast on 4 sts and starting with a K row, work in stocking st thus:

Next row – (Inc in next st) 3 times, K1. (7 sts).

Next row – P.

Next row – (Inc in next st) twice, K2, (inc in next st) twice, K1. (11 sts).

Work in stocking st for 3 rows.

Next row – K1, (sL1K, K1, pss) twice, K1, (K2tog) twice, K1. (7 sts).

Next row – P2tog, P3, P2tog. (5 sts).

Cast off.

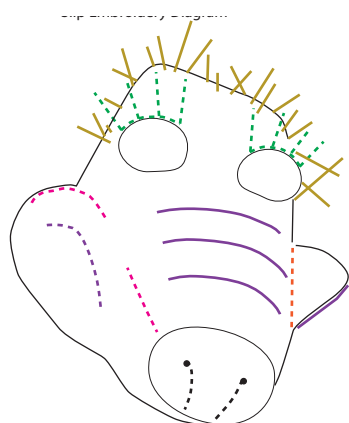
Embroidery

Use Square 6 Embroidery Diagram and photograph as a guide.

Using Yarn F, embroider nostrils on Nose.

Stuff slightly and sew Nose in position at a slight angle.

Slip Embroidery Square 6 Diagram



Key to Embroidery Diagram

- = Whipped Back Stitch, in **Yarn I**
- = Whipped Back Stitch, in **Yarn H**
- = Whipped Back Stitch, in **Yarn K**
- = Back Stitch, in **Yarn K**
- = Straight Stitch, in **Yarn F**, with yarn doubled
- = Straight Stitch, in **Yarn I**
- = Back Stitch, in **Yarn F**
- = French Knot, in **Yarn F**

SQUARE 7A – Banded Bobbles

With 4mm needles and Yarn A, cast on 55 sts.

Work in patt thus:

Row 1 – (RS), K.

Row 2 – P.

Rows 3 to 6 – As rows 1 and 2, twice.

**Break Yarn A, join in Yarn G.

Rows 7 to 12 – K every row.

Break Yarn G, join in Yarn D.

Rows 13 to 18 – As rows 1 and 2, 3 times.

Row 19 – (Bobble row), K9, *MB, K8; rep from * to last st, K1.

Row 20 – P.

Rows 21 to 26 – As rows 1 and 2, 3 times

Break Yarn D, join in Yarn G.

Rows 27 to 32 – K every row. **

Break Yarn G, join in Yarn A.

Rows 33 to 46 – As rows 13 to 26.

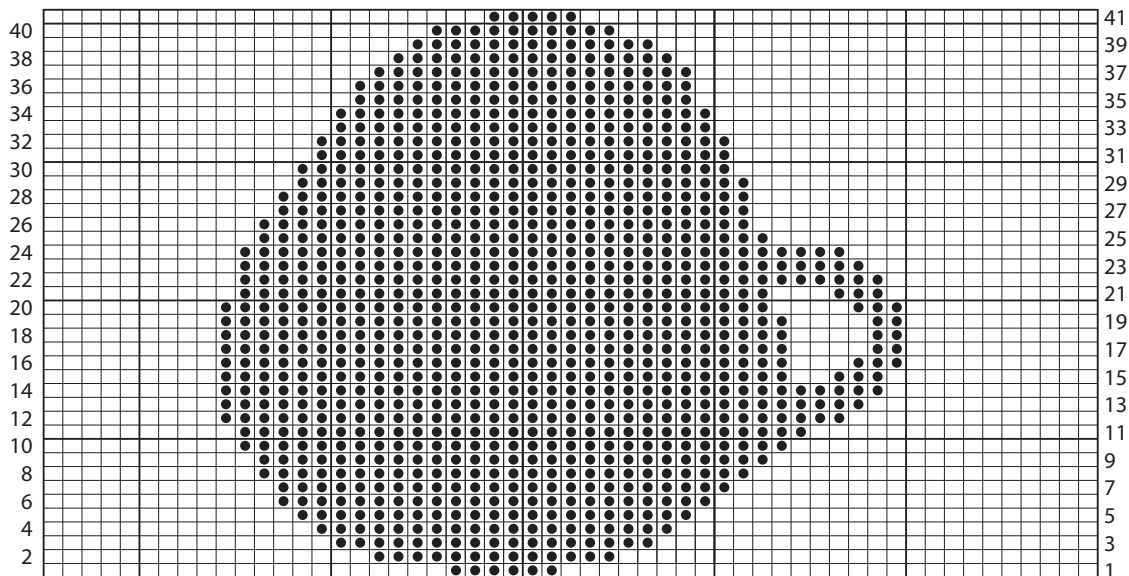
Rep from ** to ** once more.

Break Yarn G, join in Yarn A.

Rows 73 to 78 – As rows 1 and 2, 3 times.

Cast off.

Timmy Chart



Key to Timmy Chart

□ = In Yarn E - K on RS, P on WS

■ = In Yarn F - K on RS, P on WS

SQUARE 7B – Banded Bobbles

Work as Square 7A, using Yarn H in place of first Yarn A stripe at cast-on edge, using Yarn I in place of second Yarn A stripe at centre and using Yarn H in place of last Yarn A stripe at cast-off edge.

SQUARE 8 – Timmy Motif

With 4mm needles and Yarn E, cast on 55 sts and starting with a K row, work in stocking st for 18 rows, thus ending with RS facing for next row.

Joining in and breaking off colours as required, patt from Timmy chart until row 41 has been worked, ending with **WS** facing for next row. Starting with a P row, cont in Yarn E only and work in stocking st for a further 17 rows, thus ending with RS facing.

Cast off.

MAKE UP

Embroidery

Use Square 8 Embroidery Diagram and photograph as a guide.

Using Yarn M, work a row of Whipped Back Stitch for each nostril and to define the teeth.

Eyes

With 4mm needles and Yarn E, cast on 20 sts. Starting with a K row, work 6 rows in stocking st.

Break Yarn E, join in Yarn F.

Next row – (K2tog) 10 times. (10 sts).

Next row – (P2tog) 5 times. (5 sts).

Break yarn, leaving a long end. Thread through all sts, draw up tightly and fasten off securely. Right side is knit side. Join side seam using rem yarn. Stuff firmly. Work a row of gathering stitch all round cast-on edge and draw up tightly. Fasten off.

Position Eyes on centre front and sew in place securely.

Pupils: Using Yarn F, work a circle of 9 small Chain Stitches around first row of Yarn F.

Ears

Using 4mm needles and Yarn F, cast on 12 sts and starting with a K row, work in stocking st for 4 rows, thus ending with RS facing for next row.

Next row – K1, (inc in next st, K3, inc in next st) twice, K1. (16 sts).

Next row – P.

Next row – K1, (inc in next st, K5, inc in next st) twice, K1. (20 sts).

Next row – P.

Next row – K1, (inc in next st, K7, inc in next st) twice, K1. (24 sts).

Next row – P.

Starting with a K row, cont in stocking st for 12 rows, thus ending with RS facing for next row.

Shape top

Next row – K1, (K2tog, K7, K2tog) twice, K1. (20 sts).

Next row – P.

Next row – K1, (K2tog, K5, K2tog) twice, K1. (16 sts).

Next row – P.

Next row – K1, (K2tog, K3, K2tog) twice, K1. (12 sts).

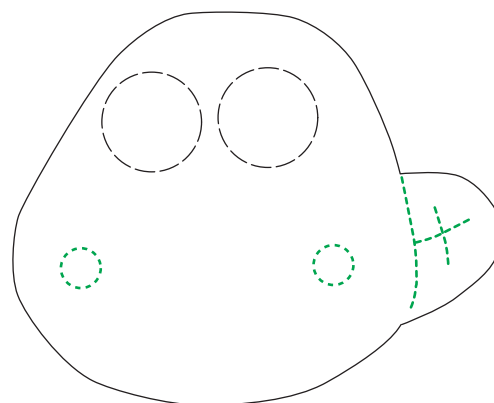
Next row – P.

Cast off.

Join seam, stuffing Ears lightly, if desired.

Using photograph as a guide, sew cast-on edge of Ears to each side of head, parallel to Eyes.

Timmy Embroidery Square 8 Diagram



Key to Embroidery Diagram

— = Position of Eyes

- - - = Whipped Back Stitch using Yarn M

Square 9A – Striped Diamonds

Note: The Inner Square is worked in garter st in one piece from the outer corners towards the centre. The Outer Borders are worked in garter st and added after completion of the Inner Square.

Inner Square

1st Corner

With 4mm needles and Yarn A, cast on 3 sts. Work in garter st stripe, shaping side edges thus:

Row 1 – (RS), K.

Row 2 and every alt row – K.

Row 3 – K1, yfwd, K1, yfwd, K1. (5 sts).

Row 5 – K1, yfwd, K3, yfwd, K1. (7 sts).

Row 7 – K1, yfwd, K5, yfwd, K1. (9 sts).

Row 8 – K.

Break Yarn A, join in Yarn I.

Row 9 – K1, yfwd, K to last st, yfwd, K1. (11 sts).

Row 11 – K1, yfwd, K to last st, yfwd, K1. (13 sts).

Row 13 – K1, yfwd, K to last st, yfwd, K1. (15 sts).

Row 15 – K1, yfwd, K to last st, yfwd, K1. (17 sts).

Row 16 – K.

Break Yarn I, join in Yarn A.

Rows 17 to 24 – As rows 9 to 16. (25 sts).

Break Yarn A, join in Yarn I.

Rows 25 and 26 – As rows 9 and 10. (27 sts).**

Break yarn and leave sts on a spare needle.

2nd Corner, 3rd Corner and 4th Corner

Work as 1st throughout, working to ** for 4th Corner.

Join Corners

With RS facing and Yarn I, work across each Corner thus:

Row 27 – (RS), (inc in first st, K26) from 4th, 3rd and 2nd Corners, (inc in first st, K25, inc in last st) from 1st Corner. (113 sts).

Row 28 – K.

Row 29 – K1, (K2tog, K23, K2tog, K1) 4 times. (105 sts).

Row 30 and every foll alt row – K.

Row 31 – K1, (K2tog, K21, K2tog, K1) 4 times. (97 sts).

Row 32 – K.

Break Yarn I, join in Yarn A.

Row 33 – K1, (K2tog, K19, K2tog, K1) 4 times. (89 sts).

Row 35 – K1, (K2tog, K17, K2tog, K1) 4 times. (81 sts).

Row 37 – K1, (K2tog, K15, K2tog, K1) 4 times. (73 sts).

Row 38 – K.

Cont thus, working 2 sts less between every dec on every alt row as set, changing colour every 8th row until 25 sts rem, ending with RS facing for next row.

Next row – K1, *K2tog, K1; rep from * to end. (17 sts).

Next row – K.

Next row – K1, *sL1K, K1, pss0; rep from * to end. (9 sts).

Next row – K.

Next row – K1, (K2tog) 4 times. (5 sts).

Break yarn, leaving a long end. Thread yarn through rem sts and draw up tightly.

Over-sew seam to form a square.

Outer Borders

With RS facing, 4mm needles and Yarn A, pick up and knit 51 sts along one side edge thus: pick up and knit 1 st from corner, *insert needle into yfwd at edge, yarn round needle and pull through, yfwd; rep from * 11 times more, pick up and knit 1 st from centre of square, **yfwd, insert needle into yfwd at edge, yarn round needle

and pull through; rep from ** 11 times more, pick up and knit 1 st from corner. (51 sts).

Next row – (WS), K.

Decrease row – K2, *K2tog, K3; rep from * to last 4 sts, K2tog, K2. (41 sts).

Work in garter st for 9 rows.

Cast off.

Work the opposite side to match.

With RS facing, 4mm needles and Yarn A, pick up and knit 5 sts from side of Outer Border, 51 sts as before along one side edge of Inner Square, then 5 sts evenly from side of Outer Border. (61 sts).

Next row – (WS), K.

Decrease row – K7, *K2tog, K7; rep from * to end. (55 sts).

Work in garter st for 9 rows.

Cast off.

Work the opposite side to match.

Square 9B – Striped Diamonds

Inner Square

Work as Square 9A, changing colours after every 8th row as before, using Yarn J in place of Yarn I.

Outer Borders

Work as Square 9A, using Yarn C in place of Yarn A.

Square 9C – Striped Diamonds

Inner Square

Work as Square 9A, changing colours after every 8th row as before, using the following colour sequence when changing colour:

Yarn H

Yarn J

Yarn I

Yarn C

Yarn I

Yarn J

Yarn H

Outer Borders

Work as Square 9A, using Yarn J in place of Yarn A.

Squares 10A, 10B and 10C – Shaun the Sheep Writing

Background (3 squares in total)

With 4mm needles and Yarn J, cast on 55 sts and work in patt thus:

Row 1 – (RS), K11, *P11, K11; rep from * to end.

Row 2 – P11, *K11, P11; rep from * to end.

Rows 3 to 15 – As rows 1 and 2, 6 times more, then row 1 again, ending with **WS** facing for next row. (15 rows worked).

Rows 16 to 30 – As rows 1 and 2, 7 times, then row 1 again, ending with RS facing for next row. (15 rows worked).

Rep these 30 rows once more, then rows 1 to 15 again (work meas approx. 25cm).

Cast off.

Turn Square B to the reverse (WS) so that the knit and purl blocks alternate. Join side seams to form a rectangle of 3 squares.

“Shaun” & “Sheep” Lettering

For the larger words, i.e., “Shaun” and “Sheep”, make several thick i-cords matching the lengths of each of the separate lines of each letter on the chart.

You may find it useful to use a sewing thread in a contrast shade to tack the outlines of the letters onto the background fabric before starting to work the i-cords. This can easily be removed as the i-cord is sewn in place.

To make an i-cord

With 4mm double-pointed needles and Yarn E, cast on 6 sts.

Next row – (RS), K6, do not turn.

******With RS facing, slip these 6 sts along the needle to the opposite needle-point.

Next row – (RS), K6, pulling the first stitch tight. Do not turn. ******

Rep from ****** to ****** until cord meas appropriate length required.

Break yarn, leaving a long end for attaching to background.

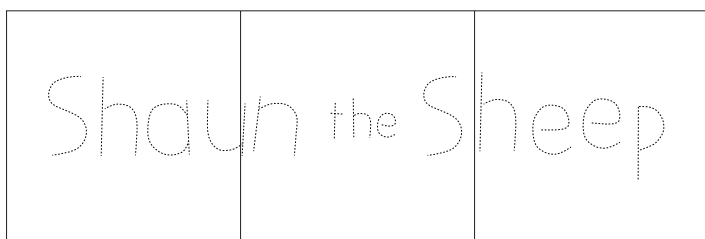
Thread end through rem sts, draw up tightly.

Pin the i-cord to the relevant line on the Background then sew in place.

“The” Lettering

For the smaller word, i.e., “the”, make several thinner i-cords matching the lengths of each of the separate lines of each letter on the chart.

With 4mm double-pointed needles and Yarn E, cast on 4 sts and work as Lettering for Shaun.



Square 11A – Mitred Garter Stitch Stripes

With 4mm needles and Yarn D, cast on 55 sts.

Next row – (WS), K.

Work first square block thus:

****Next row** – (RS), K26, sL1K, K2tog, pssso, K26, turn. (53 sts).

Next row – K to end.

Next row – K25, sL1K, K2tog, pssso, K25, turn. (51 sts).

Next row – K to end.

Next row – K24, sL1K, K2tog, pssso, K24, turn. (49 sts).

Next row – K to end.

Break Yarn D, join in Yarn G.

Next row – (RS), K23, sL1K, K2tog, pssso, K23, turn. (47 sts).

Next row – K to end.

Next row – K22, sL1K, K2tog, pssso, K22, turn. (45 sts).

Next row – K to end.

Next row – K21, sL1K, K2tog, pssso, K21, turn. (43 sts).

Next row – K to end.

Break Yarn G, join in Yarn D.

Next row – (RS), K20, sL1K, K2tog, pssso, K20, turn. (41 sts).

Next row – K to end.

Next row – K19, sL1K, K2tog, pssso, K19, turn. (39 sts).

Next row – K to end.

Next row – K18, sL1K, K2tog, pssso, K18, turn. (37 sts).

Next row – K to end.

Break Yarn D, join in Yarn G.

Next row – (RS), K17, sL1K, K2tog, pssso, K17, turn. (35 sts).

Next row – K to end.

Next row – K16, sL1K, K2tog, pssso, K16, turn. (33 sts).

Next row – K to end.

Next row – K15, sL1K, K2tog, pssso, K15, turn. (31 sts).

Next row – K to end.

Break Yarn G, join in Yarn E.

Next row – (RS), K14, sL1K, K2tog, pssso, K14, turn. (29 sts).

Next row – K to end.

Next row – K13, sL1K, K2tog, pssso, K13, turn. (27 sts).

Next row – K to end.

Next row – K12, sL1K, K2tog, pssso, K12, turn. (25 sts).

Next row – K to end.

Break Yarn E, join in Yarn D.

Next row – (RS), K11, sL1K, K2tog, pssso, K11, turn. (23 sts).

Next row – K to end.

Next row – K10, sL1K, K2tog, pssso, K10, turn. (21 sts).

Next row – K to end.

Next row – K9, sL1K, K2tog, pssso, K9, turn. (19 sts).

Next row – K to end.

Break Yarn D, join in Yarn G.

Next row – (RS), K8, sL1K, K2tog, pssso, K8, turn. (17 sts).

Next row – K to end.

Next row – K7, sL1K, K2tog, pssso, K7, turn. (15 sts).

Next row – K to end.

Next row – K6, sL1K, K2tog, pssso, K6, turn. (13 sts).

Next row – K to end.

Break Yarn G, join in Yarn D.

Next row – (RS), K5, sL1K, K2tog, pssso, K5, turn. (11 sts).

Next row – K to end.

Next row – K4, sL1K, K2tog, pssso, K4, turn. (9 sts).

Next row – K to end.

Next row – K3, sL1K, K2tog, pssso, K3, turn. (7 sts).

Next row – K to end.

Next row – K2, sL1K, K2tog, pssso, K2, turn. (5 sts).

Next row – K to end.

Next row – K1, sL1K, K2tog, pssso, K1, turn. (3 sts).

Next row – K to end.

Next row – sL1K, K2tog, pssso. (1 st).

Next row – K1. ******

This completes the first square block.

Work the second square block thus:

With RS facing, 4mm needles and Yarn D, pick up and knit 26 sts down left vertical side of square (not including rem st on needle), cast on 28 sts, turn. (55 sts).

Next row – K to end.

Work as first square from ****** to ****** to complete the second square block. *******

Fasten off. This completes the first row of square blocks.

Work the next row of square blocks, above the previous row, thus: With RS facing, 4mm needles and Yarn D, cast on 28 sts, then pick up and knit 27 sts along top of first square block of previous row, turn. (55 sts).

Next row – (WS), K to end.

Work as first row of squares from first ****** to ******* to complete the second row of squares.

Fasten off.

Square 11B – Mitred Garter Stitch Stripes

With 4mm needles and Yarn E, cast on 55 sts.

Next row – (WS), K.

Work first square block thus:

****Next row** – (RS), K26, sL1K, K2tog, pssso, K26, turn. (53 sts).

Next row – K to end.

Next row – K25, sL1K, K2tog, pss0, K25, turn. (51 sts).

Next row – K to end.

Next row – K24, sL1K, K2tog, pss0, K24, turn. (49 sts).

Next row – K to end.

Break Yarn E, join in Yarn G.

Next row – (RS), K23, sL1K, K2tog, pss0, K23, turn. (47 sts).

Next row – K to end.

Next row – K22, sL1K, K2tog, pss0, K22, turn. (45 sts).

Next row – K to end.

Next row – K21, sL1K, K2tog, pss0, K21, turn. (43 sts).

Next row – K to end.

Break Yarn G, join in Yarn J.

Next row – (RS), K20, sL1K, K2tog, pss0, K20, turn. (41 sts).

Next row – K to end.

Next row – K19, sL1K, K2tog, pss0, K19, turn. (39 sts).

Next row – K to end.

Next row – K18, sL1K, K2tog, pss0, K18, turn. (37 sts).

Next row – K to end.

Break Yarn J, join in Yarn E.

Next row – (RS), K17, sL1K, K2tog, pss0, K17, turn. (35 sts).

Next row – K to end.

Next row – K16, sL1K, K2tog, pss0, K16, turn. (33 sts).

Next row – K to end.

Next row – K15, sL1K, K2tog, pss0, K15, turn. (31 sts).

Next row – K to end.

Break Yarn E, join in Yarn J.

Next row – (RS), K14, sL1K, K2tog, pss0, K14, turn. (29 sts).

Next row – K to end.

Next row – K13, sL1K, K2tog, pss0, K13, turn. (27 sts).

Next row – K to end.

Next row – K12, sL1K, K2tog, pss0, K12, turn. (25 sts).

Next row – K to end.

Break Yarn J, join in Yarn G.

Next row – (RS), K11, sL1K, K2tog, pss0, K11, turn. (23 sts).

Next row – K to end.

Next row – K10, sL1K, K2tog, pss0, K10, turn. (21 sts).

Next row – K to end.

Next row – K9, sL1K, K2tog, pss0, K9, turn. (19 sts).

Next row – K to end.

Break Yarn G, join in Yarn J.

Next row – (RS), K8, sL1K, K2tog, pss0, K8, turn. (17 sts).

Next row – K to end.

Next row – K7, sL1K, K2tog, pss0, K7, turn. (15 sts).

Next row – K to end.

Next row – K6, sL1K, K2tog, pss0, K6, turn. (13 sts).

Next row – K to end.

Break Yarn J, join in Yarn E.

Next row – (RS), K5, sL1K, K2tog, pss0, K5, turn. (11 sts).

Next row – K to end.

Next row – K4, sL1K, K2tog, pss0, K4, turn. (9 sts).

Next row – K to end.

Next row – K3, sL1K, K2tog, pss0, K3, turn. (7 sts).

Next row – K to end.

Next row – K2, sL1K, K2tog, pss0, K2, turn. (5 sts).

Next row – K to end.

Next row – K1, sL1K, K2tog, pss0, K1, turn. (3 sts).

Next row – K to end.

Next row – sL1K, K2tog, pss0. (1 st).

Next row – K1.★★

This completes the first square block.

Work the second square block thus:

With RS facing, 4mm needles and Yarn E, pick up and knit 26 sts down left vertical side of square (not including rem st on needle), cast on 28 sts, turn. (55 sts).

Next row – K to end.

Work as first square from ★★ to ★★ to complete the second square block.★★★

Fasten off. This completes the first row of square blocks.

Work the next row of square blocks, above the previous row, thus:

With RS facing, 4mm needles and Yarn E, cast on 28 sts, then pick up and knit 27 sts along top of first square block of previous row, turn. (55 sts).

Next row – (WS), K to end.

Work as first row of squares from first ★★ to ★★★ to complete the second row of squares.

Fasten off.

Squares 12A and 12B – Shaun Motif (work 6)

With 4mm needles and Yarn H, cast on 55 sts and work in stocking st for 12 rows, thus ending with RS facing for next row.

Joining in and breaking off colours as required, patt from Shaun Chart until row 37 has been worked, thus ending with WS facing for next row.

Starting with a P row, cont in Yarn H only and work in stocking st for a further 27 rows, thus ending with RS facing for next row. Cast off.

Ears

Using 4mm needles and Yarn F, cast on 10 sts and starting with a P row, work in stocking st for 3 rows.

Next row – (RS), K1, (inc in next st, K2, inc in next st) twice, K1. (14 sts).

Next row – P.

Next row – K1, (inc in next st, K4, inc in next st) twice, K1. (18 sts).

Next row – P.

Next row – K1, (inc in next st, K6, inc in next st) twice, K1. (22 sts).

Next row – P.

Starting with a K row, cont in stocking st for 16 rows, thus ending with RS facing for next row.

Shape top

Next row – K1, (K2tog, K6, K2tog) twice, K1. (18 sts).

Next row – P.

Next row – K1, (K2tog, K4, K2tog) twice, K1. (14 sts).

Next row – P.

Next row – K1, (K2tog, K2, K2tog) twice, K1. (10 sts).

Next row – P.

Cast off.

Quiff

With 4mm needles and Yarn E, cast on 20 sts and starting with a P row, work in rev stocking st thus:

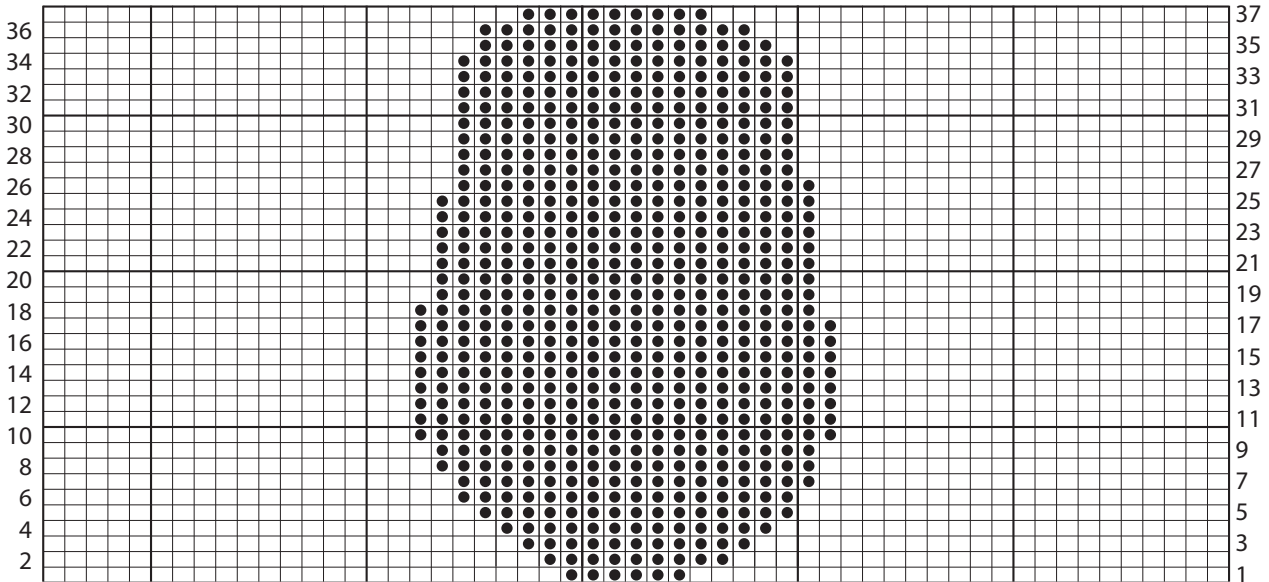
Row 1 – (RS), P.

Row 2 – K.

Row 3 – P2tog, P to last 2 sts, P2tog. (18 sts).

Row 4 – K4, M1, K to last 4 sts, M1, K4. (20 sts).

Shaun Chart



Key to Shaun Chart

- = In **Yarn H** - K on RS, P on WS
- = In **Yarn F** - K on RS, P on WS

Rows 5 to 7 – As rows 3 and 4 once more, then row 3 again. (18 sts).

Shape top

Cast off 3 sts at beg of next 4 rows. (6 sts).

Cast off rem sts.

Eyes

With 4mm needles and Yarn E, cast on 14 sts. Starting with a K row, work 4 rows in stocking st.

Next row – (K2tog) 7 times. (7 sts).

Break yarn, leaving a long end and thread the yarn through all sts and draw up tightly. Join side seam using rem yarn. Place a small amount of stuffing in the centre, work a gathering st all round outer edge, draw up tightly and fasten off securely. Right side is knit side.

MAKE UP

With purl side face-up, sew cast-on edge of Quiff to top of Head using a back stitch. Stuff gently then sew remainder in place.

Position Eyes at centre front below the Quiff and sew in place securely.

Ears: Fold in half lengthways. Join side seam. Stuff lightly, if desired. Over-sew cast-on edge, then sew Ears to side edges of Head, just below Quiff.

Embroidery

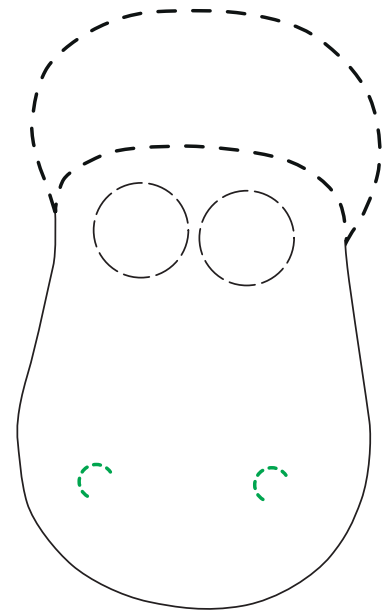
Use Square 12 Embroidery Diagram and photograph as a guide.

Pupils: Using Yarn F, work a circle of 7 small Chain Stitches on each Eye.

Nostrils: Using Yarn M, embroider where indicated, using whipped Back Stitch.

Squares 12B - optional embroidery: Using photograph as a guide, add Straight Stitches using Yarn J to create grass stems on each side of mouth, then using Yarn G work a couple of Detached Chain Stitches for petals.

Shaun Embroidery Square 12 Diagram



Key to Shaun Embroidery Diagram

- = Position of Quiff
- = Position of Eyes
- = Whipped Back Stitch using **Yarn M**



MAKE UP OF BLANKET

Block out all squares to size and cover with a damp cloth. Remove after 30 minutes and leave to dry flat.

Using photograph and Placement Diagram as a guide (or use your own preferred layout), join the squares together to form five rows of five squares. Consider rotating some of them.

Upper Border

With 4mm needles and Yarn J, cast on 9 sts and work in garter st until Border fits along top edge, when slightly stretched, sewing in place as you go along.

Cast off.

Lower Border

Work as Upper Border, working along lower edge.

Left Side Border

With 4mm needles and Yarn J, cast on 9 sts and work in garter st until Border fits up Left side edge and Borders, when slightly stretched, sewing in place as you go along.

Cast off.

Right Side Border

Work to match Left Side Border.

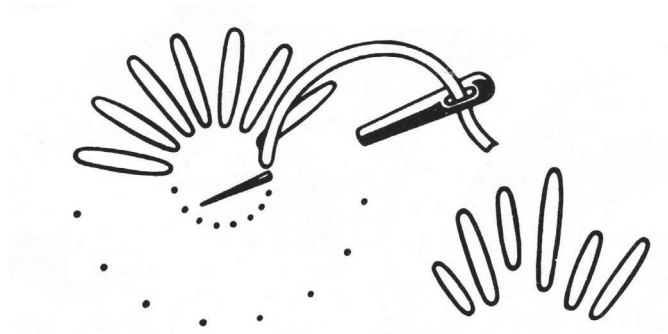
Do not dry handknits in harsh sunlight as fading or yellowing may occur. Do not tumble dry. Dry flat.

Placement Diagram

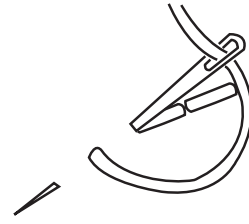
12A	9B	7B	3A	12A
11B	6	1A	4	9C
12B	10A	10B	10C	12B
9A	2	1B	8	7A
12A	11A	5	3B	12A

EMBROIDERY STITCHES

Straight Stitch



Back Stitch



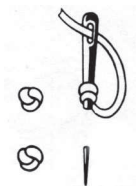
Chain Stitch



Whipped Back Stitch



French Knot



To find your local stockist
click here

[STORE
LOCATOR](#)

To view the information
guides click here

[INFORMATION
PAGES](#)

Shaun the Sheep MOVIE

**OUT NOW ON DVD,
BLU-RAY & DOWNLOAD**



When Shaun decides to take the day off and have some fun, he gets a little more action than he bargained for! Shaun's mischief inadvertently leads to The Farmer being taken away from the farm, to the Big City...

Join Shaun, Bitzer and The Flock on their hilarious, action-packed, big screen adventure as they make plans to rescue the missing Farmer.

KNIT TO WIN

Some baa-rilliant Shaun the Sheep The Movie and Rowan goodies to be won... Take photos of you knitting your Shaun the Sheep Picnic Blanket...or why not enjoy a 'pic-knit' whilst you are knitting your blanket!

Simply post your photos to the Rowan Yarns Facebook page before the closing date of August 1st 2015 to be in with the chance to win!

See full terms and conditions on knitrowan.com.



TREAT YOUR FLOCK...

 **STUDIOCANAL**