

R O  A N

# Triangle Squares Cushion

By Kaffe Fasset



R O W A N

# Triangle Squares Cushion

by Kaffe Fassett



## YARN

### Rowan Cotton Glace & Revive

#### Cotton Glace

A	727	Black	4 x 50gm
B	841	Garnet	1 x 50gm
C	833	Ochre	1 x 50gm
D	445	Blood Orange	1 x 50gm
E	724	Bubbles	1 x 50gm
F	829	Twilight	1 x 50gm
G	838	Umber	1 x 50gm
H	832	Persimmon	1 x 50gm
I	837	Baked Red	1 x 50gm
J	747	Candy Floss	1 x 50gm

#### Revive

K	470	Firestone	1 x 50gm
L	469	Flint	1 x 50gm
M	462	Basalt	1 x 50gm
N	473	Grit	1 x 50gm
O	467	Ironstone	1 x 50gm
P	465	Rock	1 x 50gm
Q	463	Pink Granite	1 x 50gm
R	461	Pumice	1 x 50gm
S	472	Loam	1 x 50gm

## NEEDLES

1 pair 3¼mm (no 10) (US 3) needles

## TENSION

24 sts x 34 rows over intarsia patt using 3¼mm (US 3) needles

## EXTRAS

1 x 60cm (24in) cushion pad

## FINISHED SIZE

Approx 60cm (24in) square

## CUSHION ( Front and Back alike)

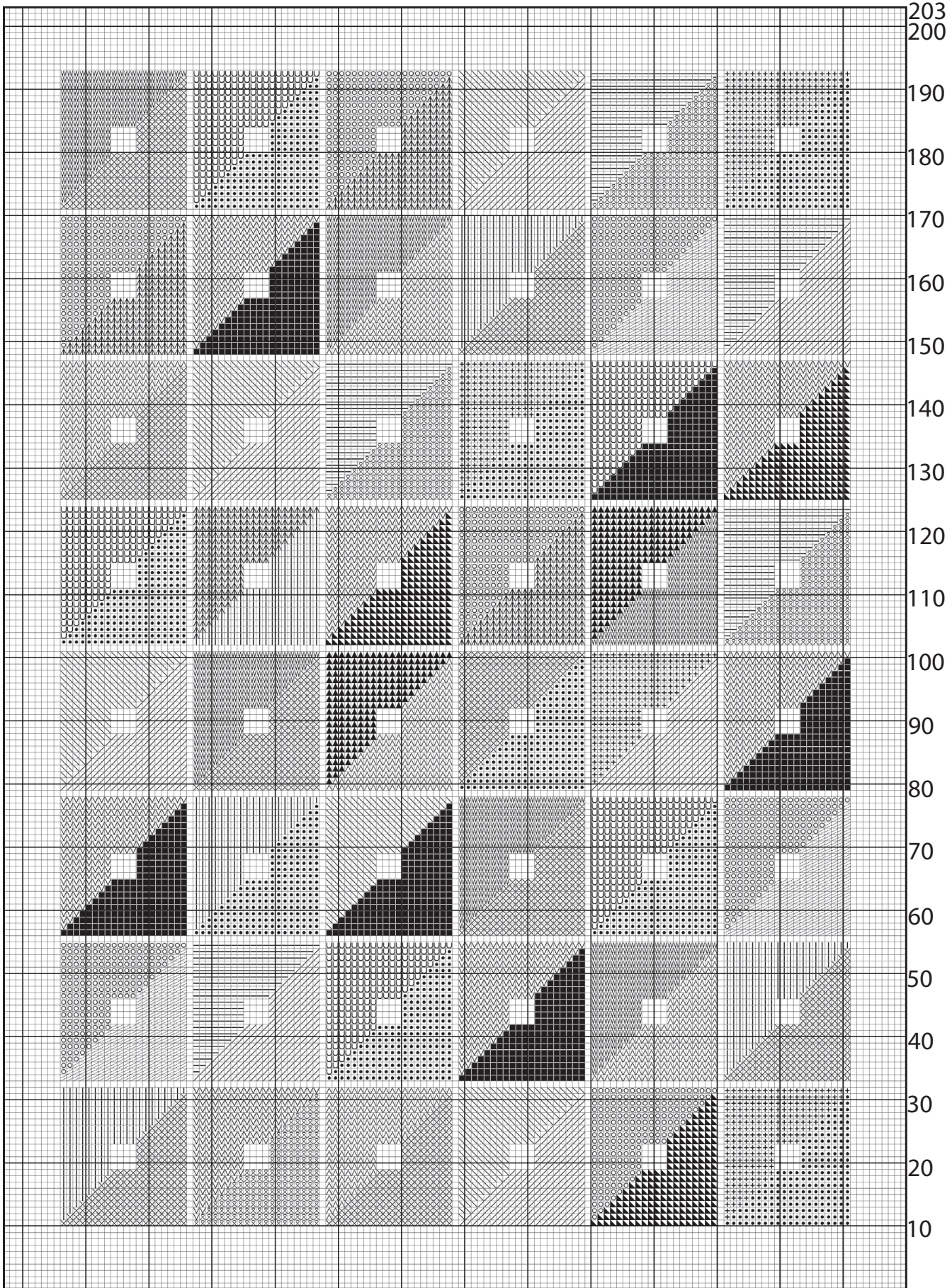
Using 3¼mm (US 3) needles and yarn A cast on 143sts.

Using the **intarsia** technique as described on the information page, cont in patt from chart, which is worked entirely in st st beg with a K row until all 203 rows have been worked. Work should meas 60cm (24in). Cast off.

## MAKING UP

Press.

Using mattress stitch or back stitch if preferred join together along 3 edges, insert cushion pad and close 4<sup>th</sup> side.



key

- A
- ◻ B
- ◻ C
- ◻ D
- ◻ E
- ◻ F
- ◻ G
- ◻ H
- ◻ I
- ◻ J
- ◻ K
- ◻ L
- ◻ M
- ◻ N
- ◻ O
- ◻ P
- ◻ Q
- ◻ R
- ◻ S