

R O W A N



Polar

By Heather Dixon





Polar

by Heather Dixon



SIZE

S	M	L	XL	XXL	
81-86	91-97	102-107	112-117	122-127	cm
32-34	36-38	40-42	44-46	48-50	in

YARN

Lima

A Andes 880					
8	9	10	11	12	x 50gm
B Bolivia 890					
3	3	4	4	4	x 50gm

NEEDLES

- 1 pair 5mm (no 6) (US 8) needles
- 1 pair 5½mm (no 5) (US 9) needles

TENSION

21 sts and 24 rows to 10 cm measured over patterned st st, 20 sts and 26 rows to 10 cm measured over plain st st, both using 5½mm (US 9) needles.

BACK

Using 5mm (US 8) needles and yarn A cast on 97 [107: 119: 131: 145] sts.

Row 1 (RS): K1, *P1, K1, rep from * to end.

Row 2: P1, *K1, P1, rep from * to end.

These 2 rows form rib.

Work in rib for a further 20 rows, ending with RS facing for next row.

Change to 5½mm (US 9) needles.

Beg with a K row, now work in st st as follows:

Work 2 rows.

Join in yarn B.

Using yarn B, work 2 rows.

Using yarn A, work 2 rows.

Using yarn B, work 2 rows.

Break off yarn B and cont using yarn A **only**.

Cont straight until back meas 35 [36: 37: 38: 39] cm, ending with RS facing for next row.

Shape raglan armholes

Cast off 3 sts at beg of next 2 rows. 91 [101: 113: 125: 139] sts.

Dec 1 st at each end of next 1 [1: 7: 17: 25] rows, then on 4 [1: 0: 0: 0] foll 4th rows, then on foll 17 [25: 25: 21: 19] alt rows.

47 [47: 49: 49: 51] sts.

Work 1 row, ending with RS facing for next row.

Break yarn and leave rem 47 [47: 49: 49: 51] sts on a holder (for neckband).

FRONT

Work as given for back until 20 [16: 16: 14: 12] rows less have been worked than on back to beg of raglan armhole shaping, ending with RS facing for next row.

Place motif

Using the **intarsia** technique as described on the information page, now place motif from chart for motif, which is worked entirely in st st beg with a K row, as follows:

Next row (RS): Using yarn A K29 [34: 40: 46: 53], work next 39 sts as row 1 of chart for motif, using yarn A K29 [34: 40: 46: 53].

Next row: Using yarn A P29 [34: 40: 46: 53], work next 39 sts as row 2 of chart for motif, using yarn A P29 [34: 40: 46: 53].

These 2 rows set the sts – centre 39 sts in patt from chart for motif and all other sts still in st st using yarn A.

Cont as now set for a further 18 [14: 14: 12: 10] rows, ending with RS facing for next row.

Shape raglan armholes

Keeping patt correct, cast off 3 sts at beg of next 2 rows.

91 [101: 113: 125: 139] sts.

Dec 1 st at each end of next 1 [1: 7: 17: 25] rows, then on 4 [1: 0: 0: 0] foll 4th rows, then on foll 0 [8: 7: 3: 0] alt rows.

81 [81: 85: 85: 89] sts.

Work 1 row, ending with RS facing for next row. All 40 rows of chart for motif are now complete.

Now working **all** sts in st st using yarn A **only**, cont as folls:

Dec 1 st at each end of next and foll 6 alt rows. 67 [67: 71: 71: 75] sts.

Work 1 row, ending with RS facing for next row.

Shape front neck

Next row (RS): K2tog, K14 [14: 16: 16: 18] and turn, leaving rem sts on a holder.

Work each side of neck separately.

Dec 1 st at neck edge of next 6 rows, then on foll 2 [2: 3: 3: 4] alt rows **and at same time** dec 1 st at raglan armhole edge of 2nd and foll 4 [4: 5: 5: 6] alt rows. 2 sts.

Work 1 row, ending with RS facing for next row.

Next row (RS): K2tog and fasten off.

With RS facing, slip centre 35 sts onto a holder, rejoin yarn, K to last 2 sts, K2tog. 15 [15: 17: 17: 19] sts.

Complete to match first side, reversing shapings.

SLEEVES

Using 5mm (US 8) needles and yarn A cast on 43 [45: 47: 47: 49] sts. Work in rib as given for back for 14 rows, ending with RS facing for next row.

Change to 5½mm (US 9) needles.

Beg and ending rows as indicated, using the **fairisle** technique as described on the information page, working chart rows 1 to 24 **once only** and then repeating chart rows 25 to 54 throughout, cont in patt from chart for sleeve, which is worked entirely in st st beg with a K row, as folls:

Inc 1 st at each end of 3rd and every foll 4th row to 65 [71: 69: 75: 83] sts, then on every foll 6th row until there are 79 [83: 85: 87: 91] sts, taking inc sts into patt.

Cont straight until sleeve meas 46 [47: 48: 48: 48] cm, ending with RS facing for next row.

Shape raglan

Keeping patt correct, cast off 3 sts at beg of next 2 rows.

73 [77: 79: 81: 85] sts.

Dec 1 st at each end of next 9 rows, then on every foll alt row until 25 sts rem.

Work 1 row, ending with RS facing for next row.

Left sleeve only

Dec 1 st at each end of next row, then cast off 4 sts at beg of foll row. 19 sts.

Dec 1 st at beg of next row, then cast off 4 sts at beg of foll row. 14 sts.

Right sleeve only

Cast off 5 sts at beg and dec 1 st at end of next row. 19 sts.

Work 1 row.

Cast off 4 sts at beg and dec 1 st at end of next row. 14 sts.

Work 1 row.

Both sleeves

Rep last 2 rows twice more.

Cast off rem 4 sts.

MAKING UP

Press as described on the information page.

Join both front and right back raglan seams using back stitch, or mattress stitch if preferred. (**Note:** Due to difference in row tensions, there are 4 rows more in back and front raglan edges than in sleeve raglan edges but edges should be the same length.)

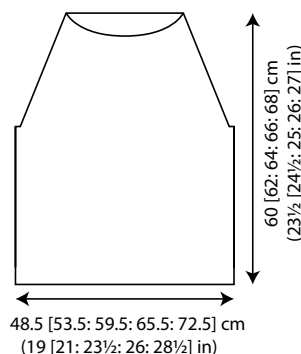
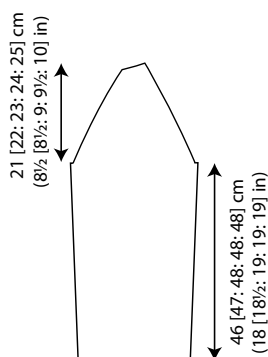
Neckband

With RS facing, using 5mm (US 8) needles and yarn B, pick up and knit 18 sts from top of left sleeve, 11 [11: 13: 13: 15] sts down left side of front neck, K across 35 sts on front holder, pick up and knit 11 [11: 13: 13: 15] sts up right side of front neck, and 18 sts from top of right sleeve, then K across 47 [47: 49: 49: 51] sts on back holder dec 1 st at centre. 139 [139: 145: 145: 151] sts.

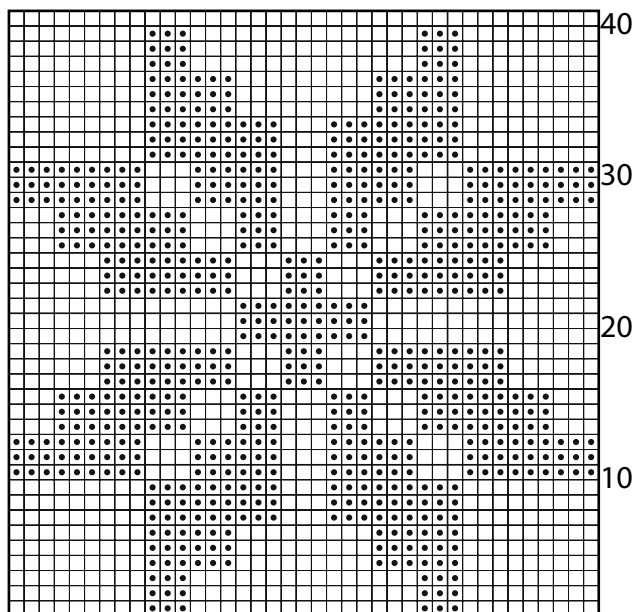
Beg with row 2, work in rib as given for back for 11 rows, ending with RS facing for next row.

Cast off in rib.

See information page for finishing instructions.



Motif Chart



Key

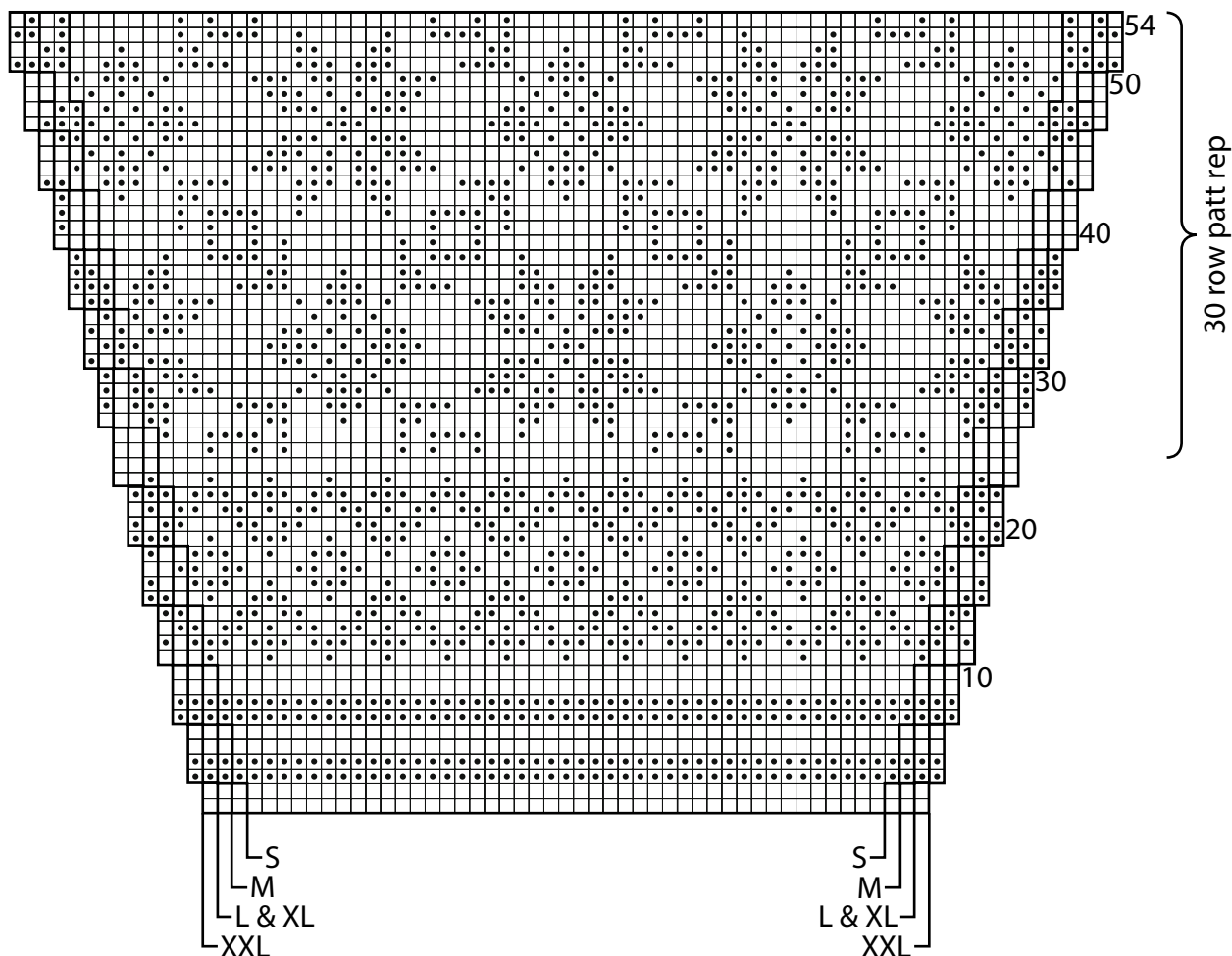


A



B

Sleeve Chart



STORE
LOCATOR

INFORMATION
PAGES

If you're having difficulty viewing or printing our PDF patterns, please ensure you have the latest version of Adobe Acrobat Reader. Download the latest version here; <http://get.adobe.com/reader/>

All right reserved. Reproduction in whole or any part of all material, including illustrations and designs, in this publication/pattern is strictly forbidden and is sold on the condition that it is used for non commercial purposes. No part may be reproduced, stored in a retrieval system, or transmitted in any form or by any means electronic, electrostatic, magnetic tape, mechanical, photocopying, recording or otherwise without prior permission of the copyright owners having been given in writing. Yarn quantities are approximate and are based on average requirements. Images and shades are for guidance only as colours may not display accurately on screen or in printed format. Contact your local stockist to view a fringed (not digital reproduction) yarn shade card.

