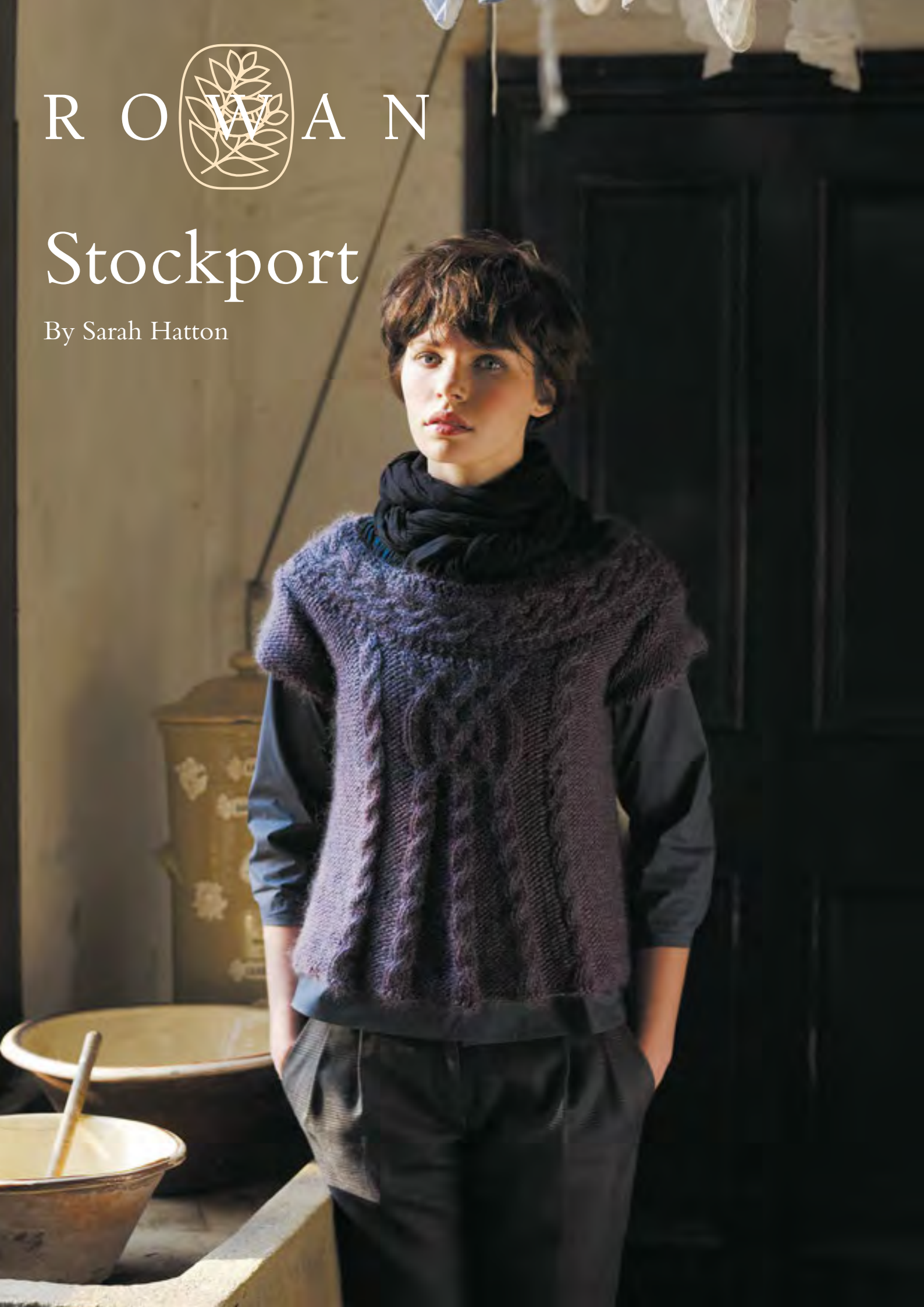


R O W A N



Stockport

By Sarah Hatton





Stockport

by Sarah Hatton



SIZE

S	M	L	XL	XXL	
To fit bust					
81-86	91-97	102-107	112-117	122-127	cm
32-34	36-38	40-42	44-46	48-50	in

YARN

Rowan Cocoon

5	5	6	7	8	x 100gm
---	---	---	---	---	---------

(photographed in Bilberry 812)

NEEDLES

1 pair 6mm (no 4) (US 10) needles
 1 pair 7mm (no 2) (US 10½) needles
 Cable needle

TENSION

14 sts and 16 rows to 10 cm measured over rev st st using 7mm (US 10½) needles.

SPECIAL ABBREVIATIONS

Cr3R = slip next st onto cable needle and leave at back of work, K2, then P1 from cable needle; **Cr3L** = slip next 2 sts onto cable needle and leave at front of work, P1, then K2 from cable needle; **C4B** = slip next 2 sts onto cable needle and leave at back of work, K2, then K2 from cable needle; **C4F** = slip next 2 sts onto cable needle and leave at front of work, K2, then K2 from cable needle; **Cr4R** = slip next 2 sts onto cable needle and leave at back of work, K2, then P2 from cable needle; **Cr4L** = slip next 2 sts onto cable needle and leave at front of work, P2, then K2 from cable needle.

BACK

Using 7mm (US 10½) needles cast on 80 [88: 96: 104: 114] sts.

Rows 1 and 2: Purl.

Row 3 (RS): P16 [20: 24: 28: 33], K4, P6, K4, (P8, K4) twice, P6, K4, P to end.

Row 4: K16 [20: 24: 28: 33], P4, K6, P4, (K8, P4) twice, K6, P4,

K to end.

Now work in cable patt as folls:

Row 1 (RS): P16 [20: 24: 28: 33], K4, P6, K4, (P8, K4) twice, P6, K4, P to end.

Row 2: K16 [20: 24: 28: 33], P4, K6, P4, (K8, P4) twice, K6, P4, K to end.

Rows 3 and 4: As rows 1 and 2.

Row 5: P16 [20: 24: 28: 33], C4B, P6, C4B, (P8, C4B) twice, P6, C4B, P to end.

Row 6: As row 2.

These 6 rows form cable patt.

Cont in patt for a further 7 rows, ending with **WS** facing for next row.

Next row (WS): K16 [20: 24: 28: 33], P4, K6, P4, (sl 1, K1, pssso, K4, K2tog, P4) twice, K6, P4, K to end. 76 [84: 92: 100: 110] sts.

Keeping sts correct as now set, work 13 rows, ending with **WS** facing for next row.

Next row (WS): K16 [20: 24: 28: 33], P4, K6, P4, (sl 1, K1, pssso, K2, K2tog, P4) twice, K6, P4, K to end. 72 [80: 88: 96: 106] sts.

Keeping sts correct as now set, work 12 rows, ending with **RS** facing for next row.

Now place cable panel as folls:

Next row (RS): Patt 24 [28: 32: 36: 41] sts, work next 24 sts as row 1 of cable panel, patt to end.

Next row: Patt 24 [28: 32: 36: 41] sts, work next 24 sts as row 2 of cable panel, patt to end.

These 2 rows set the sts – central cable panel with edge sts still in patt.

Repeating the cable panel 16 row patt rep throughout, cont as set until back meas 31 [32: 33: 34: 35] cm, ending with **RS** facing for next row.

Shape armholes

Keeping patt correct, cast off 4 sts at beg of next 2 rows.

64 [72: 80: 88: 98] sts.**

Dec 1 st at each end of next 1 [3: 5: 7: 9] rows, then on foll 1 [2: 1: 1: 2] alt rows.

60 [62: 68: 72: 76] sts.

Cont straight until armhole meas 12 [13: 14: 15: 16] cm, ending with RS facing for next row.

Shape back neck

Next row (RS): Patt 14 [15: 17: 19: 20] sts and turn, leaving rem sts on a holder.

Work each side of neck separately.

Keeping patt correct, dec 1 st at neck edge of next 10 rows.

4 [5: 7: 9: 10] sts.

Work 3 rows, ending with RS facing for next row.

Shape shoulder

Cast off.

With RS facing, rejoin yarn to rem sts, cast off centre 32 [32: 34: 34: 36] sts, patt to end.

Complete to match first side, reversing shapings.

FRONT

Work as given for back to **.

Dec 1 st at each end of next 1 [3: 5: 7: 9] rows, then on foll alt row. 60 [64: 68: 72: 78] sts.

Work 3 [1: 1: 1: 1] rows, ending with RS facing for next row.

Shape front neck

Next row (RS): (P2tog) 0 [1: 0: 0: 1] times, patt 19 [19: 22: 24: 24] sts and turn, leaving rem sts on a holder.

Work each side of neck separately.

Keeping patt correct, dec 1 st at neck edge of next 10 rows, then on foll 5 alt rows.

4 [5: 7: 9: 10] sts.

Cont straight until front matches back to shoulder cast-off, ending with RS facing for next row.

Shape shoulder

Cast off.

With RS facing, rejoin yarn to rem sts, cast off centre 22 [22: 24: 24: 26] sts, patt to last 0 [2: 0: 0: 2] sts, (P2tog) 0 [1: 0: 0: 1] times.

Complete to match first side, reversing shapings.

SLEEVES

Using 7mm (US 10½) needles cast on 49 [51: 53: 55: 57] sts.

Rows 1 and 2: Purl.

Beg with a P row, cont in rev st st as folls:

Work 4 rows, ending with RS facing for next row.

Shape top

Cast off 4 sts at beg of next 2 rows.

41 [43: 45: 47: 49] sts.

Dec 1 st at each end of next and every foll alt row until 35 sts rem.

Work 1 row, ending with RS facing for next row.

Cast off 6 sts at beg of next 2 rows.

Cast off rem 23 sts.

MAKING UP

Press as described on the information page.

Join both shoulder seams using back stitch, or mattress stitch if preferred.

Neckband

Using 6mm (US 10) needles cast on 16 sts.

Row 1 (RS): Knit.

Row 2 and every foll alt row: K3, P10, K3.

Row 3: K5, (C4B) twice, K3.

Row 5: Knit.

Row 7: K3, (C4F) twice, K5.

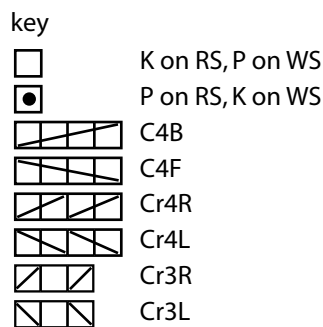
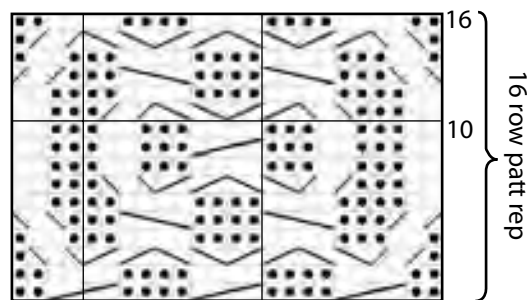
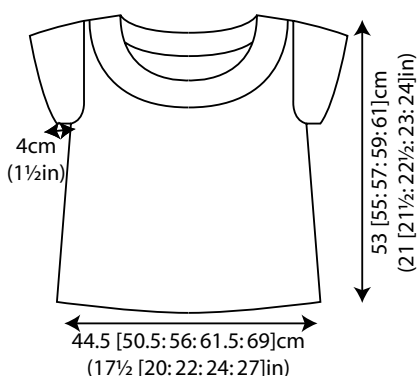
Row 8: As row 2.

These 8 rows form patt.

Cont in patt until neckband, when slightly stretched, fits neatly around entire front and back neck edges, ending with RS facing for next row.

Cast off in patt.

Join cast-on and cast-off ends of neckband, then neatly sew one row-end edge to neck edge, placing neckband seam at centre back. See information page for finishing instructions, setting in sleeves using the set-in method.



STORE LOCATOR

INFORMATION PAGES

If you're having difficulty viewing or printing our PDF patterns, please ensure you have the latest version of Adobe Acrobat Reader. Download the latest version here; <http://get.adobe.com/reader/>

All right reserved. Reproduction in whole or any part of all material, including illustrations and designs, in this publication/pattern is strictly forbidden and is sold on the condition that it is used for non commercial purposes. No part may be reproduced, stored in a retrieval system, or transmitted in any form or by any means electronic, electrostatic, magnetic tape, mechanical, photocopying, recording or otherwise without prior permission of the copyright owners having been given in writing. Yarn quantities are approximate and are based on average requirements. Images and shades are for guidance only as colours may not display accurately on screen or in printed format. Contact your local stockist to view a fringed (not digital reproduction) yarn shade card.

