

R O W A N

# Kirkby

by Martin Storey



## SIZE

M	L	XL	
To fit bust/chest			
102	107	112	cm
40	42	44	in

## YARN

### Rowan Felted Tweed Aran

13 14 15 17 18 19 x 50gm  
(photographed in Mahogany 734)

## NEEDLES

1 pair 4mm (no 8) (US 6) needles  
1 pair 5mm (no 6) (US 8) needles  
Cable needle

## TENSION

16 sts and 23 rows to 10 cm measured over stocking stitch using 5mm (US 8) needles.

## SPECIAL ABBREVIATIONS

**C4B = Cable 4 back Slip** next 2 sts onto cable needle and leave at back of work, K2, then K2 from cable needle

**C4F = Cable 4 front Slip** next 2 sts onto cable needle and leave at front of work, K2, then K2 from cable needle

**Cr4R = Cross 4 right Slip** next st onto cable needle and leave at back of work, K3, then P (or K depending on point in patt) st from cable needle

**Cr4L = Cross 4 left Slip** next 3 sts onto cable needle and leave at front of work, P (or K depending on point in patt) 1 st, then K3 from cable needle

**C7B = Cable 7 back Slip** next 4 sts onto cable needle and

leave at back of work, K3, then K4 from cable needle

**MB = Make bobble** (K1, yfwd, K1, yfwd, K1) all into next st, turn, P5, turn, K5, turn, P2tog, K1, P2tog, turn, sl 1, K2tog, pssso

## BACK

Cast on 93 (97: 101) sts using 4mm (US 6) needles.

**Row 1 (RS):** K0 (0: 1), P3 0 (2: 3), \*K3, P3, rep from \* to last 3 (5: 1) sts, K0 3 (3: 1), P0 (2: 0).

**Row 2:** P0 (0: 1), K3 0 (2: 3), \*P3, K3, rep from \* to last 3 (5: 1) sts, P3 (3: 1), K0 (2: 0).

These 2 rows form rib.

Work in rib for a further 15 rows, ending with a RS row.

**Row 18 (WS):** Rib 18 (20: 22), \*(M1, rib 1) 5 times, M1, rib 10, (M1, rib 1) twice, M1, rib 9, rep from \* 1 times more, (M1, rib 1) 5 times, M1, rib to end.

117 (121: 125) sts.

Change to 5mm (US 8) needles.

Cont in patt as folls:

**Row 1 (RS):** (K1, P1) 5 (6: 7) times, \*work next 27 sts as row 1 of cable chart, P1, C4B, K2, P1, rep from \* 1 times more, work next 27 sts as row 1 of cable chart, (P1, K1) to end.

**Row 2:** (K1, P1) 5 (6: 7) times, \*work next 27 sts as row 2 of cable chart, K1, P6, K1, rep from \* 1 times more, work next 27 sts as row 2 of cable chart, (P1, K1) to end.

**Row 3:** (K1, P1) 5 (6: 7) times, \*work next 27 sts as row 1 of cable chart, P1, K2, C4F, P1, rep from \* 1 times more, work next 27 sts as row 1 of cable chart, (P1, K1) to end.

**Row 4:** As row 2.

These 4 rows set the sts - 3 cable panels separated by cables and moss st at sides.

Keeping sts correct as set, cont as folls:

Cont straight until back measures 45 (46: 47) cm, ending with a WS row.

### Shape armholes

Keeping patt correct, cast off 5 (6: 7) sts at beg of next 2 rows. 107 (109: 111) sts.

Dec 1 st at each end of next 3 rows, then on foll 2 alt rows, then on foll 4th row. 95 (97: 99) sts.

Cont straight until armhole measures 23 (24: 25) cm, ending with a WS row.

### Shape shoulders and back neck

Cast off 6 (11) sts at beg of next 2 rows.

73 (75: 77) sts.

**Next row (RS):** Cast off 11 sts, patt until there are 14 sts on right needle and turn, leaving rem sts on a holder.

Work each side of neck separately.

Cast off 4 sts at beg of next row.

Cast off rem 10 sts.

With RS facing, rejoin yarn to rem sts, cast off centre 23: (25: 27) sts dec 6 sts evenly, patt to end.

Complete to match first side, reversing shapings.

## FRONT

Work as given for back until 12 rows less have been worked than on back to start of shoulder shaping, ending with a WS row.

### Shape neck

**Next row (RS):** Patt 39 sts and turn, leaving rem sts on a holder.

Work each side of neck separately.

Dec 1 st at neck edge of next 3 rows, then on foll 4 alt rows, ending with a WS row. 32 sts.

### Shape shoulder

Cast off 11 sts at beg of next and foll alt row.

Work 1 row.

Cast off rem 10 sts.

With RS facing, rejoin yarn to rem sts, cast off centre 17 (19: 21) sts dec 6 sts evenly, patt to end.

Complete to match first side, reversing shapings.

## SLEEVES (both alike)

Cast on 39: (41: 43) sts using 4mm (US 6) needles.

**Row 1 (RS):** K0 (1: 2), P3, \*K3, P3, rep from \* to last 0 (1: 2) sts, K0 (1: 2), P0.

**Row 2:** P0 (1: 2), K3, \*P3, K3, rep from \* to last 0 (1: 2) sts, P0 (1: 2), K0.

These 2 rows form rib.

Work in rib for a further 15 rows, ending with a RS row.

**Row 18 (WS):** Rib 17: (18: 19), (M1, rib 1) 5 times, M1, rib to end. 45 (47: 49) sts.

Change to 5mm (US 8) needles.

Cont in patt as folls:

**Row 1 (RS):** Inc in first st, P0 (1: 0), (K1, P1) 4 (4: 5) times, work next 27 sts as row 1 of cable chart, (P1, K1) 4 (4: 5) times, P0 (1: 0), inc in last st.

47 (49: 51) sts.

**Row 2:** P0 (1: 0), (K1, P1) 5 (5: 6) times, work next 27 sts as row 2 of cable chart, (P1, K1) 5 (5: 6) times, P0 (1: 0).

These 2 rows set the sts – cable panel with moss st at sides.

Keeping sts correct as set, cont as folls:

Inc 1 st at each end of 7th and every foll 10th 8th row to 55 (61: 65) sts, then on every foll 6th row until there are 71 (73: 75) sts, taking inc sts into moss st.

Cont straight until sleeve measures 48 (49: 50) cm, ending with a WS row.

### Shape top

Keeping patt correct, cast off 5 (6: 7) sts at beg of next 2 rows. 61 sts.

Dec 1 st at each end of next 3 rows, then on foll alt row, then on every foll 4th row until 45 sts rem.

Work 1 row, ending with a WS row.

Dec 1 st at each end of next and foll 3 alt rows, then on foll 3 rows, ending with a WS row. 31 sts.

Cast off 5 sts at beg of next 2 rows. 21 sts.

Cast off rem 21 sts.

## MAKING UP

**PRESS** as described on the information page.

Join right shoulder seam using back stitch, or mattress st if preferred.

### Collar

With RS facing and using 4mm (US 6) needles, pick up and knit 16 sts down left side of neck, 12 (15: 15) sts from front, 16 sts up right side of neck, then 28 (31: 31) sts from back. 72 (78: 78) sts.

**Row 1 (WS):** \*P3, K3, rep from \* to end.

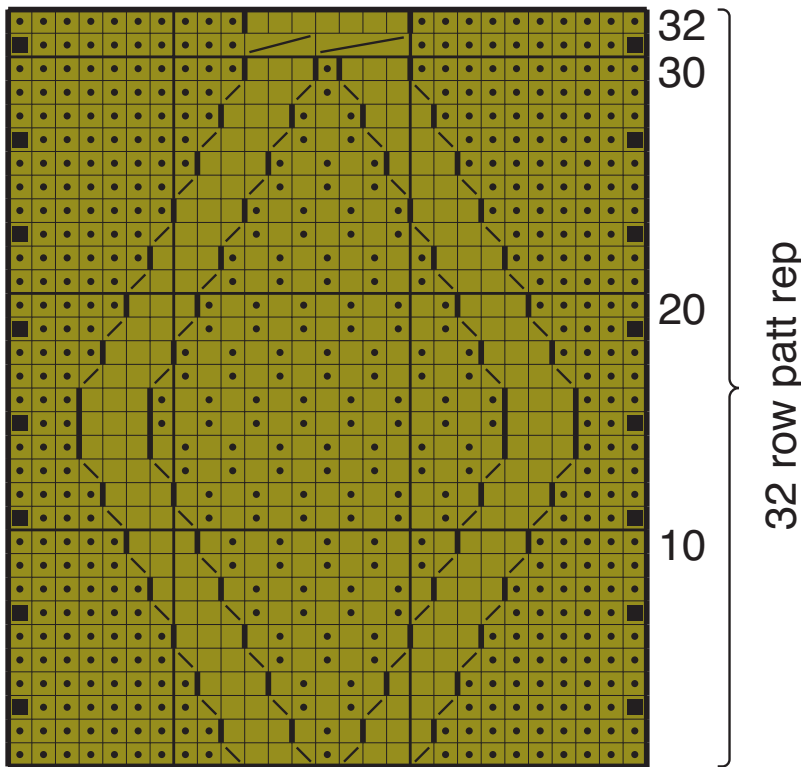
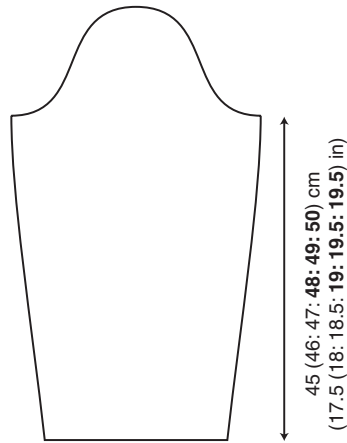
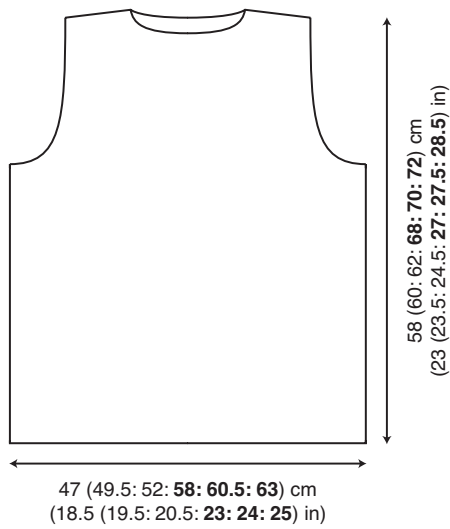
Rep this row until collar measures 5 cm.

Change to 5mm (US 8) needles.

Cont in rib until collar measures 16 cm.

Cast off in rib.

See information page for finishing instructions, setting in sleeves using the set-in method and reversing collar seam for turn-back.



### Key

- K on RS, P on WS
- P on RS, K on WS
- make bobble
- ▧ Cr4R
- ▨ Cr4L
- ▩ C7B